

Australian

Knitting

Projects • Patterns

AUSTRALIA'S
FAVOURITE

25

AMAZING
PROJECTS

Patterns
for babies
and kids

EASY-TO-FOLLOW
STEP-BY-STEP
INSTRUCTIONS

Fantastic
CROCHET
Ideas

MAKE YOUR OWN
SKIRT, SHAWL, BEANIE,
SUMMER PATTERNS AND MORE

HEAPS OF TIPS, TECHNIQUES AND IDEAS

 **Patons**

~ trusted since 1923 ~

Super
soft



BIG BABY 8 PLY

KNIT THIS SEASIDE SMOCK
SIZED FROM 3 MONTHS
TO 4 YEARS



These patterns and more are available in Seaside Tots, book 105

Phone 1800 337 032 for your nearest stockist or visit
patonsyarns.com.au  /auspinners  @auspinners

From the Team

We hope you enjoy our summer edition of Australian Knitting. We have some beautiful ideas for you to attempt in this issue. With a great selection of patterns and styles, we have everyone's tastes covered. There are some great homemaker ideas this issue, from pot plant covers to covers for your kitchen or barbecue pots.

A new issue of Australian Knitting is on sale every 12 weeks, so keep an eye out at your local newsagent. Taking out a subscription will ensure you don't miss out on any issue, you'll enjoy savings and each magazine will be delivered directly to you.

We always enjoy hearing from our readers so please send us an email or letter. Please send emails to simon@wpc.com.au or mail to Woodlands Publishing PO Box 8035 Glenmore Park 2745.

Happy knitting!

Simon and the team





AUSTRALIAN
ALPACA

tailored *strands* 

luxurious knitting yarns

- Luxuriously soft and versatile.
- Stylish, elegant and light.
- Your imagination can be your springboard.
- New Stockist enquiries welcome.



Contact Tailored Strands or ask at your local wool retailer

p (03) 5345 6169 • f (03) 5345 6187
PO Box 368 Creswick Victoria 3363
info@tailoredstrands.com.au • www.tailoredstrands.com.au

Contents

Issue Vol 9 No 4



Feature

8 **Fashion** – Trends

Patterns

12 **Boho Cardi** – Patons

13 **Crocheted Silk Shawl** –
Kaalund Yarns

14 **Throw** – Banksia Yarns

15 **Fitted Scoop Cardigan** – Jo Sharp

16 **Romper** – Patons

19 **Baby's Top** – Patons

21 **Triangle Cushion** – Panda Yarns

23 **Garter Stitch Yoke Dress** –
Patons

26 **Urban Beanie** – Jo Sharp

28 **Vintage Crochet Blanket** –
Jo Sharp

29 **Wrap Around Skirt** – Knit Picks

30 **Silk Lace Drawstring Bag** –
Knitting Yarns by Mail

31 **Men's Jumper** – Cleckheaton

32 **Child's Jumper with Front
Cables** – Patons

34 **Child's Crochet Jumper** – Patons

37 **Girl's Short Sleeved Cardigan** –
Patons



Book Store – page 80



15



16

- 40 **Little Shrug & Hat** –
Naturally Yarns
- 42 **A-line Tunic** – Jo Sharp
- 43 **Short Sleeve Lace Top** –
Naturally Yarns
- 44 **Crew Neck Sweater** –
Jo Sharp
- 45 **Vee Vest** – Jo Sharp
- 46 **Instructions for Patterns**

Regulars

- 3 From the Editor
- 6 News
- 74 Glossary
- 79 Yarn Stores
- 80 Book Store
- 82 Next Issue



79



12

Keeping you inspired with the latest knitting ideas and news, this issue we show you how to use your knitting to help the environment! We also take a look at upcoming shows and events, plus we have listed some amazing books that every knitter is sure to love.

By Janie Medbury

Did you know...?



- When knitting was first introduced as a working industry, only males were allowed to take part. Women were even banned from joining the first knitting union, which was established in 1527.
- The fastest knitter in the world, Miriam Tegels, can hand knit an amazing 118 stitches in just 60 seconds!
- In 2012, over three thousand enthusiastic knitters came together to set the world record for the most people knitting at the same time.
- Rather than wool, the most common knitting materials used in the first five hundred years of knitting were actually cotton and silk.
- The first style of knitting needles were mostly made from ivory, bone and tortoise shell.
- William Lee invented the first knitting machine in 1589, eventually causing hand knitting to become a non-essential leisure activity.

Smart ways to recycle old knitting needles

Have you recently upgraded your knitting needles, or do you have a pair that's bent out of shape? Or perhaps you have a whole box full stashed away and don't know what to do with them! Well don't throw them away just yet – there are plenty of unique and practical ways you can recycle your old needles. Here are some innovative ideas to consider:

- 1. Unique jewellery:** Plastic knitting needles can be upcycled to make funky jewellery such as bangles or bracelets. All you need to do is bend the needle into a circle! There are plenty of tutorials on the internet that will show you how. This idea works best with coloured needles.
- 2. Plant steaks:** Unbent knitting needles can also be used as plant supports – simply place the pointed end down into the soil and use string to tie the needle to plant. This will help the plant to grow straight.
- 3. Delightful knick knacks:** Metal knitting needles can be shaped into a letter and hung on the wall as an interesting decoration!
- 4. Wooden needles:** Alternatively, why not use wooden needles as Japanese-style hair pins to hold your bun together? Wooden needles can also be used as an alternative to tooth picks to test when your cake is done!





BOOK REVIEWS

Super Chunky Knits: 35 Fun and Fast Designs to Knit. By Lauren Aston

Fill your life with colourful, quick, and stylish knits. Acclaimed young designer Lauren Aston specializes in patterns using super chunky yarns and big needles, so you can quickly knit up a cushion cover, blanket, or bean bag for your home. If you're looking for something new to wear, there are patterns for a hat, slipper socks, a snood and a shawl that can all be made in no time. There is also a full techniques section explaining the stitches you will need to know. Using a variety of yarns and needle sizes, you will soon be able to achieve the same stunning results as Lauren herself. **RRP \$24.85**

Afghan Knits: 18 Contemporary Designs for Throws, Runners and Cushions. By Martin Storey
Renowned knit designer Martin Storey is back with an all-new collection: 18 throws, runners, and pillows with his trademark contemporary flair! Modern stripes, creative cables, lacy openwork, textured stitches, eye-catching colorways, a touch of glamour and style. There's something here to entice knitters of all skill levels into discovering the flexibility, beauty, and endless possibilities offered by these delightful afghan designs. **RRP \$27.95**



Australian Shows and Fairs

23 – 26 Nov 2017 Melbourne Stitches and Craft Show, Royal Exhibition Building, Carlton Gardens

The Stitches & Craft Show has a fresh new look filled with lots of new features. See the latest trends, products and supplies, be inspired by the creators and speak directly to the experts. The show is more than just an expo, it's an experience. Discover new craft materials, tools, gadgets and machines to inspire your creativity and experts to help you get started. So dream it, create it, come along and make it. You'll love it!

23 – 26 Nov 2017 Melbourne Intocraft LIVE: Christmas Edition, Royal Exhibition Building Melbourne, VIC

Intocraft LIVE is all about doing what you love. Covering a great selection of crafts, this event offers the perfect mix of inspiration, learning opportunities from experts across a

range of crafts, and great shopping for the latest supplies to get crafting straight away! Intocraft LIVE is a destination event for the dedicated craft community as well as a great place to visit for the modern crafter or those looking to try their hand at something crafty for the first time. For more information, visit www.intocraftlife.com.au

25 - 26 Nov 2017 Australian Quilt Market, Melbourne Exhibition Centre Melbourne, VIC

Since 1998, the Australian Quilt Market has been the prime venue to view and buy the very latest in patchwork, knitting, and stitching. From its humble beginnings, the AQM has become the largest wholesale event in the southern hemisphere! The market offers access to hundreds of internationally renowned manufacturers and converters. For more information, visit www.aqm.net.au

International Shows and Fairs

26 - 29 Oct 2017 Crafts for Christmas Show, Glasgow, UK
Welcome to a shiny and bedecked festive dream! This unique event features over 150 exhibitors showcasing exclusive ranges of bespoke and unusual gifts, including glass, jewellery, art, candles, ceramics, clothing and so much more. Enjoy live music and festive food and drink as you tick off your Christmas shopping list!

9 - 11 Nov 2017 Original Sewing & Quilt Expo-Minneapolis, USA
Original Sewing & Quilt Expo-Minneapolis is a 3 day event being

held from 9th November to the 11th November 2017 in Minneapolis, United States of America. This event showcases products like craft, needlework, or art activities such as: decoupage, quilting, teddy bear and doll making, tapestry, papercraft, sewing, cross stitch, stencilling, stamping, weaving, embroidery, spinning, painting, or knitting. Training and courses involving craft, art or needlework, craft kits etc. in the Knitting and Stitching industry. For more information, visit www.sewingexpo.com

Summer Styles

Summer has officially announced its arrival with blue skies and plenty of sunshine, so now is the time to update your wardrobe with styles that will help keep you feeling (and looking) cool. But just because the weather is heating up, doesn't mean you should put your knitting needles away – there are plenty of summer-appropriate projects that you can embark on.

By Janie Medbury

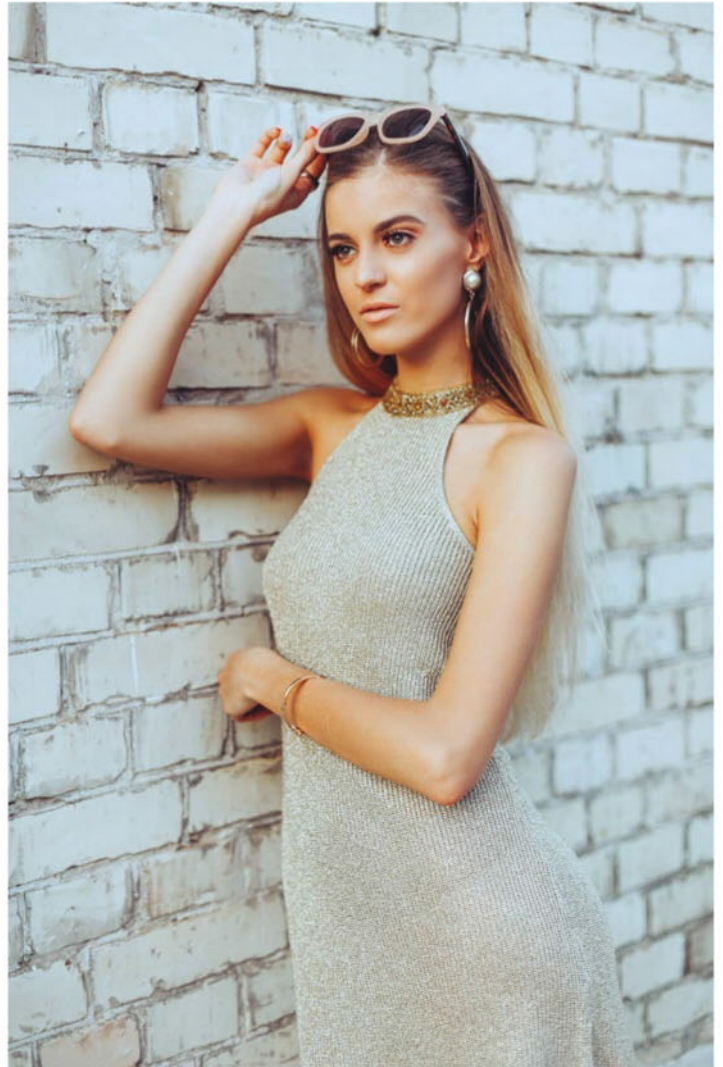


Lightweight yarns can be the perfect material for making cool, breezy tops and dresses, and knitted accessories are always a fashionable addition to any outfit no matter what the season. This summer will be all about sophisticated neutrals and pops of bright colour, so you can tone it down or liven it up as much as you like!

Styles We Love

This season, we go back to basics. It's all about casual, relaxed, boho vibes. The focus is on wardrobe essentials that can be worn in a number of ways and for a range of different occasions, including simple dresses, tank tops and t-shirts – these are classic staples that can be easily dressed up or down, and accessorised to your liking. Knitted beachwear is especially stylish at the moment, and is a great alternative to traditional swimwear, which can be expensive and have inconsistent quality.

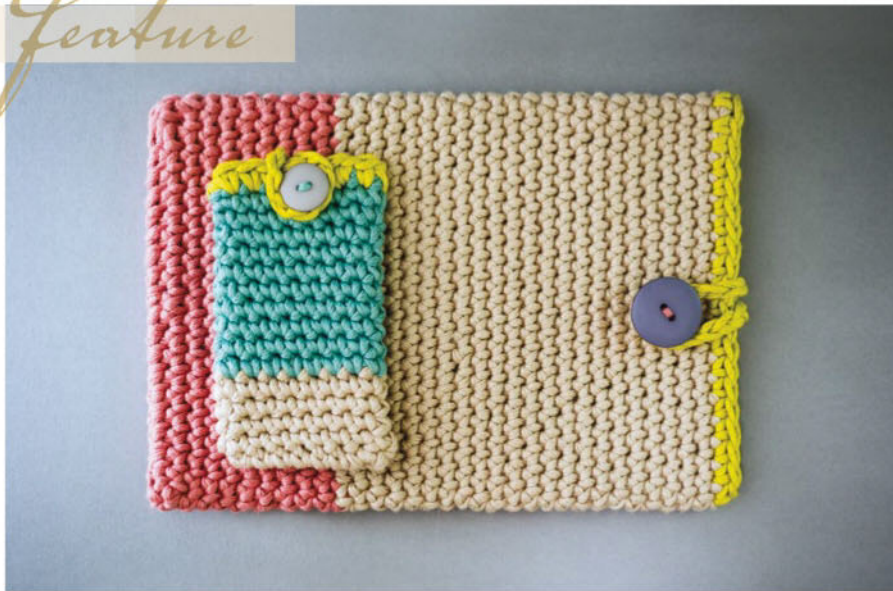
Tank Tops – Tank tops are a summer staple – they keep you cool, come in a range of styles and can easily be dressed up or down. This season, easy-to-wear, loose and relaxed tops will be in vogue, particularly in soft neutrals. For something a little different, opt for a halter neck; these are chic and always in style.



Classic T-Shirt – You can never go wrong with a t-shirt. This classic wardrobe essential doesn't have to be plain or boring though – knit one in a vibrant colour like fuchsia, royal blue or blood orange, or create interest by adding intricate details like buttons or a lace hem. Try dressing up your t-shirt by pairing it with a long skirt and some chunky jewellery, or simply pair it with jeans or shorts for a more casual vibe.

Beachwear – Beach season has arrived, so why not try making your own swimwear instead of spending money at the shops? Crocheted bikinis will be popular this season, but if you prefer to keep covered up, opt for a crocheted swimwear cover-up instead. This will help protect your skin from the sun while adding a unique, stylish element to your beachwear. Try one in white for a timeless chic look.





Backpacks – Knitted backpacks are the ‘in’ thing this season. Make a mini backpack to replace your handbag, or a larger one to take to the beach or on a picnic. Knitted backpacks are cute in any colour, but bright turquoise, hot pink or pale beige will be particularly stylish this summer. Add tassels for an extra-cool look. Why not knit a matching hat too?

Phone Covers – This season, keep your phone protected from the elements in a stylish pouch that you’ve knitted yourself. It won’t break like some of the plastic ones, it costs less, and the great thing about making your own is that you can decide on a unique design. Go a step further and knit up a matching iPad cover! These make great gifts for gadget-loving friends and family.

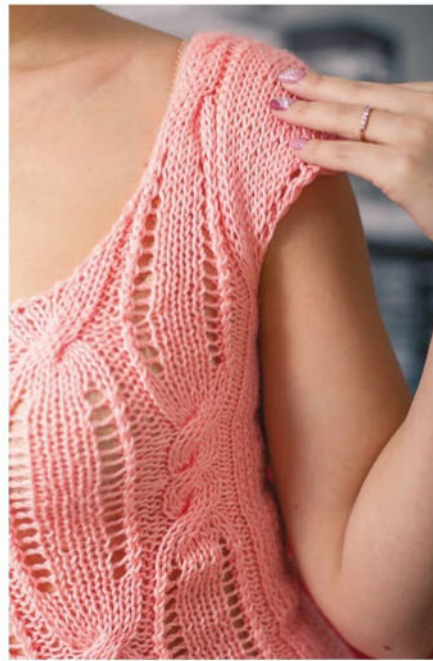
Colours

Boho beige: This versatile neutral will be a hit this season. Beige, whether it’s barely there or nearly tan, is the ultimate shade for evoking relaxed, boho vibes. Beige needn’t be boring though – simply add a pop of aqua or butter yellow in the form of a bag or a pair of shoes to liven up your look.

Classic white: White is a classic that never goes out of style, but it is set to make a real comeback this summer. This non-colour will be especially popular on the beach this season, so if you’re thinking of knitting up a bikini, beach bag, hat or cover-up, a white yarn is sure to keep you looking stylish in the sun.

Soft pink: A gentle throwback to spring, soft shades of pink are the perfect choice for those who like colour but not too much of it. Opt for a pastel pink top or a blush pink handbag to add a subtle splash of colour to your wardrobe. Delicate pinks will look especially beautiful when paired with clean and classic white, or barely there neutrals.

Candy colours: Neutrals will be popular this season, but that doesn’t mean you should be colour-shy! We



will be seeing lots of eye-catching colours this season, including bright blues and aqua, daisy yellows, purples and pinks. You can opt for bright candy colours (perfect for accessories), or softer, pastel shades (perfect for tops and dresses).

Patterns to Try

5771 Crochet Top by Wendy

This delicate crochet top is the perfect way to add some style to your summer wardrobe. It can be dressed up or down, and looks great in a range of colours. Opt for a pastel shade for simple

elegance, or try it in a deep, vibrant colour for more of an edgy look.

5877 Elegant Shirt by Wendy

This classic knit shirt is a must-have for summer. It is the perfect casual addition to your wardrobe. Try it in a bright colour, such as the purple in the picture, and pair it with a flowy skirt or some capri pants.

F943 Summer Dress by Filatura Di Crosa

We have found you the perfect summer dress. This simple yet chic

design is versatile enough to be worn in both casual and fancier settings. Opt for a vibrant colour such as orange or red, and pair it with neutral or metallic accessories.

TX113 Boho Singlet Top by Katia

This singlet top evokes relaxed, boho vibes – perfect for a sweltering hot day by the pool or to wear over your swimmers on a trip to the beach. This style works best in neutral colours, such as beige, cream or white. Pair it with brightly coloured accessories for an eye-catching look.





Boho Card — see page 46 for pattern instructions



Crocheted Silk Shawl – see page 50 for pattern instructions





Throw —see page 52 for pattern instructions



Fitted Scoop Cardigan — see page 53 for pattern instructions



Romper Design by Patons

YARN

- 1 x ball 100g Patons Big Baby 4 Ply in Sherbet 2579
- 1 x ball 100g Patons Big Baby 4 Ply in Lemon 9927
- 5 buttons

NEEDLES AND TOOLS

- 3.25mm knitting needle
- 3.00mm knitting needle
- wool needle

MEASUREMENTS

Size: 0,3,6,9,12,18months
 To Fit Chest: 35, 40, 45, 50, 53, 55cm
 Actual Size (at underarm): 28, 33, 38, 43, 46, 48cm
 Length (approx, when worn): 32, 36, 40, 45, 50, 55cm

TENSION

28 sts and 36 rows to 10cm over stocking st, using 3.25mm needles.

WORKING PATTERN

BACK

Beg Crotch

Using 3.00mm needles and M, cast on 13 (13, 17, 17, 17, 17) sts loosely.

Row 1: K2, * P1, K1, rep from * to last st, K1.

Row 2: K1, * P1, K1, rep from * to end.

Last 2 rows form rib. **

Work a further 4 rows rib.

Change to 3.25mm needles.

*** Work in stocking st stripes of 4 rows M and 4 rows C throughout, AT SAME TIME cast on 4 (5, 5, 6, 6, 7) sts at beg of 3rd row, then at beg of foll 9 rows. 53 (63, 67, 77, 77, 87) sts.

Cont in stocking st stripes without shaping until Back measures approx 15 (18, 21, 25, 30, 34) cm from end of shaping, ending with a complete 4 row stripe and dec 6 (6, 8, 8, 6, 6) sts evenly across last row. 47 (57, 59, 69, 71, 81) sts.

Beg Rib Yoke

Keeping stripes correct, work 8 rows rib (as before).

Shape Armholes

Keeping rib correct for rem, cast off 5 sts at beg of next 2 rows. 37 (47, 49, 59, 61, 71) sts.
 Dec one st at each end of every row until 31 (41, 43, 53, 55, 65) sts rem, then in every foll alt row until 27 (37, 39, 49, 51, 61) sts rem. ***
 Work **23** (27, **31**, 35, **37**, 39) rows without further shaping.

Shape Back Neck

Next Row: Rib 10, cast off next 7 (17, 19, 29, 31, 41) sts in rib, rib to end.
 Cont on these 10 sts for left side of back neck.

Dec one st at neck edge in every foll 4th row until 5 sts rem.

Work 7 rows rib.

Next Row: Rib 2, yrn (to make a stitch), rib 2tog, rib 1. buttonhole.
 Work 3 rows rib.

Next Row: Rib 1, ybk, sl 1, rib 2tog, pssso, rib 1. 3 sts.

Work 1 row.
 Cast off in rib.

With WS facing, join appropriate colour to rem 10 sts for right side of back neck.

Dec one st at neck edge in every foll 4th row until 5 sts rem.

Work 7 rows rib.

Next Row: Rib 2, yrn (to make a stitch), rib 2tog, rib 1 – buttonhole.
 Work 3 rows rib.

Next Row: Rib 1, ybk, sl 1, rib 2tog, pssso, rib 1. 3 sts.
 Work 1 row.
 Cast off in rib.

FRONT

Work as for Back to **.

Next Row: Rib 6 (6, 8, 8, 8, 8), yfwd, K2tog, rib 5 (5, 7, 7, 7, 7) – buttonhole.
 Work 3 rows rib.

Change to 3.25mm needles.

Work as for Back from *** to ***.
 Work 11 (15, 19, 21, 23, 25) rows without further shaping.

Shape Front Neck

Next Row: Rib 10 (10, 10, 12, 12, 12), cast off next 7 (17, 19, 25, 27, 37) sts in rib, rib to end.

Cont on these 10 (10, 10, 12, 12, 12) sts for right side of front neck.

Dec one st at neck edge in every row until 8 sts rem, then in every foll alt row until 5 sts rem.

Work 1 row.

Next Row: Rib 1, ybk, sl 1, rib 2tog, pssso, rib 1. 3 sts.

Work 1 row.

Cast off in rib.

With WS facing, join appropriate colour to rem 10 (10, 10, 12, 12, 12) sts for left side of front neck.

Dec one st at neck edge in every row until 8 sts rem, then in every foll alt row until 5 sts rem.

Work 1 row.

Next Row: Rib 1, ybk, sl 1, rib 2tog, pssso, rib 1. 3 sts.

Work 1 row.

Cast off in rib. ▶





◀ **Romper continued.**

BACK NECKBAND

With RS facing, using 3.00mm needles and M, knit up one st in final cast-off of right shoulder strap, knit up 27 sts evenly along right side of back neck, knit up 7 (17, 19, 29, 31, 41) sts across sts cast off in centre, knit up 27 sts evenly along left side of back neck, then knit up one st in final cast-off of left shoulder strap. 63 (73, 75, 85, 87, 97) sts.

Row 1: Inc in first st, * K1, P1, rep from * to last 2 sts, K1, inc in last st. Rep last row 4 times. 73 (83, 85, 95, 97, 107) sts.
Cast off loosely in rib.

FRONT NECKBAND

With RS facing, using 3.00mm needles and M, knit up one st in final cast-off of left shoulder strap, knit up 11 (11, 11, 13, 13, 13) sts evenly along left side of front neck, knit up 7 (17, 19, 25, 27, 37) sts across sts cast off in centre, knit up 11 (11, 11, 13, 13, 13) sts evenly along right side of front neck, then knit up one st in final cast-off of right shoulder strap.

31 (41, 43, 53, 55, 65) sts.
Work 5 rows rib and inc as for Back Neckband. 41 (51, 53, 63, 65, 75) sts.
Cast off loosely in rib.

LEFT ARMHOLE BAND

Using mattress stitch, join side seams, matching stripes. With RS facing, using 3.00mm needles and M, knit up one st in final cast-off of left shoulder strap on Back, knit up 53 (56, 59, 62, 64, 65) sts evenly around back armhole edge to side seam, knit up 28 (31, 34, 37, 39, 40) sts evenly along front armhole edge to top of left shoulder strap on Front, then knit up one st in final cast-off of left shoulder strap.

83 (89, 95, 101, 105, 107) sts.
Work 5 rows rib and inc as for Back Neckband. 93 (99, 105, 111, 115, 117) sts.
Cast off loosely in rib.

RIGHT ARMHOLE BAND

With RS facing, using 3.00mm needles and M, knit up one st in final cast-off of right shoulder strap on Front, knit up 28 (31, 34, 37, 39, 40) sts evenly around front armhole edge to side seam, knit up 53 (56, 59, 62, 64, 65) sts evenly along back armhole edge to top of right shoulder strap on Back, then knit up one st in final cast-off of right shoulder strap. 83 (89, 95, 101, 105, 107) sts.

Work 5 rows rib and inc as for Back Neckband. 93 (99, 105, 111, 115, 117) sts.
Cast off loosely in rib.

LEFT LEG BAND

With RS facing, using 3.00mm needles and M, knit up 59 (69, 69, 79, 79, 89) sts evenly along left leg opening and across ends of crotch bands.

Row 1: K1, * P1, K1, rep from * to end.

Row 2: Rib to last 5 sts, rib 2tog, yrn, rib 3. buttonhole.
Work 3 rows rib.
Cast off loosely in rib.

RIGHT LEG BAND

With RS facing, using 3.00mm needles and M, knit up 59 (69, 69, 79, 79, 89) sts evenly along right leg opening and across ends of crotch bands.

Row 1: K1, * P1, K1, rep from * to end.

Row 2: Rib 3, yrn, rib 2tog, rib to end. buttonhole.
Work 3 rows rib.
Cast off loosely in rib.

POCKET

Using 3.25mm needles and M, cast on 19 sts.

Work 2 rows stocking st, beg with a knit row.

Row 3: K1, K2tog, knit to last 3 sts, sl 1, K1, pss0, K1. 17 sts.

Work 3 rows.

Dec one st (as before) at each end of next row, then in every foll 4th row until 11 sts rem.

Work 3 rows.

Cast off.

POCKET EDGINGS

With RS facing, using 3.00mm needles and M, knit up 19 sts evenly along shaped side edge of pocket.

Work 5 rows rib as for Back, beg with a 2nd row.

Cast off loosely in rib.

Rep on other side edge of pocket.

TO MAKE UP

DO NOT PRESS. Using a flat seam, join edges of front neck and armhole bands at top of front straps, then join back neck and armhole bands at top of back straps. Sew on buttons to top of straps on front. Sew buttons to back crotch band to correspond to buttonholes on front crotch band. Sew top and bottom edges of pocket in position as pictured.

Patons

Ph: 1800 337 032

www.patonsyarns.com.au

Baby's Top

Design by Patons



YARN

- 1 ball 100g Patons Big Baby 8 ply in Silver 2565 – Main colour (M)
- 1 ball 100g Patons Big Baby 8 ply in Banana 2561 – Contrast colour 1 (C1)
- 1 ball 100g Patons Big Baby 8 ply in Cream 2656 – Contrast colour 2 (C2)
- 3 buttons

NEEDLES

- 4.00mm crochet hook
- Wool sewing needle

MEASUREMENTS

Size: 0, 3, 6, 9, 12, 18 mths

To fit chest: 35, 40, 45, 50, 53, 55cm

Finished fit: 40, 45, 50, 55, 58, 60cm

Garment length: 20, 23, 26, 31, 34, 36cm

Sleeve length: 11, 13, 16, 19, 21, 23cm

TENSION

16tr by 9 rows over tr fabric, on 4.00mm hook to 10cm.

SPECIAL ABBREVIATIONS

Dec – * yoh, draw up a lp in next st, yoh and draw through 2 lps on hook, rep from * in next st, yoh and draw through all 3 lps on hook.

dDec – * yoh, draw up a lp in next st, yoh and draw through 2 lps on hook, rep from * in each of next 2 sts, yoh and draw through all 4 lps on hook.

STITCH GUIDE

Note: Australian/UK crochet terminology used throughout.

STRIPE PATT

Note: When changing colour, use new colour to work final lp of last st in old colour.

Using C2, work 2 (3, 3, 4, 4, 4) rows tr.

Using C1, work 2 (2, 3, 3, 4, 5) rows tr.

Last 4 (5, 6, 7, 8, 9) rows form Stripe Patt.



 Patons



◀ **Romper continued.**

BACK

Using 4.00mm hook and C1, make 35 (38, 43, 47, 49, 51) ch loosely.

Row 1: Miss 3ch (counts as one tr), 1tr in each ch to end. 33 (36, 41, 45, 47, 49) tr.

Row 2: (1dc, 1ch) in first tr, 1tr in each tr to end.
Rep last row 0 (0, 1, 1, 2, 3) times.

Beg Stripes

Work 8 (10, 12, 14, 16, 18) rows Stripe Patt (above).

Shape Raglan Armholes

Row 1: Using M for rem, sl st in first tr, (1dc, 1ch) in next tr, dDec, 1tr in each tr to last 5 sts, dDec, 1tr in next tr, turn, leaving last st unworked. 27 (30, 35, 39, 41, 43) sts.

Row 2: (1dc, 1ch) in first st, Dec, 1tr in each tr to last 3 sts, Dec, 1tr in last st. 25 (28, 33, 37, 39, 41) sts. **

Rep last row 5 (6, 5, 4, 5, 5) times. 15 (16, 23, 29, 29, 31) sts.

Next Row: (1dc, 1ch) in first st, dDec, 1tr in each tr to last 4 sts, dDec, 1tr in last tr. 11 (12, 19, 25, 25, 27) sts.

Rep last 2 rows 0 (0, 1, 2, 2, 2) times. 11 (12, 13, 13, 13, 15) sts.
Fasten off.

FRONT

Work as for Back to **.
Rep last row 3 (4, 5, 4, 5, 5) times. 19 (20, 23, 29, 29, 31) sts.

Sizes 9, 12 and 18 months only

Next Row: (1dc, 1ch) in first st, dDec, 1tr in each tr to last 4 sts, dDec, 1tr in last st. (25, 25, 27) sts.

Next Row: (1dc, 1ch) in first st, Dec, 1tr in each tr to last 3 sts, Dec, 1tr in last st. (23, 23, 25) sts.

All sizes
19 (20, 23, 23, 23, 25) sts.

Next Row: (1dc, 1ch) in first st, (Dec) 1 (1, 0, 0, 0, 0) times, (dDec) 0 (0, 1, 1, 1, 1) times, 1tr in each of next 2tr, Dec, turn.

Cont on these 5 sts for side of neck.

Next Row: 2ch, miss first tr, 1tr in next st, Dec, 1tr in last st. 3 sts.

Next Row: 2ch, miss first tr, Dec. Fasten off.

Miss 5 (6, 7, 7, 7, 9) tr and join M with a sl st in next tr for other side of neck.

Next Row: 2ch, 1tr in each of next 3tr, (Dec) 1 (1, 0, 0, 0, 0) times, (dDec) 0 (0, 1, 1, 1, 1) times, 1tr in last tr.

Next Row: (1dc, 1ch) in first st, (Dec) twice. 3 sts.

Next Row: 2ch, miss first st, Dec. Fasten off.

SLEEVES

Using 4.00mm hook and C1, loosely make 20 (22, 22, 24, 24, 24) ch.

Row 1: Miss 3ch (counts as one tr), 1tr in each ch to end. 18 (20, 20, 22, 22, 22) sts.

Row 2: (1dc, 1ch) in first tr, 1tr in each tr to end.

Using C2 (C2, C1, C1, C1, C1), cont as folls –

Row 3: (1dc, 1ch) in first tr, 2tr in next tr, 1tr in each tr to last 2 sts, 2tr in next tr, 1tr in last st. 20 (22, 22, 24, 24, 24) sts.

Keeping Stripes correct as for Back, inc one st (as before) at each end of every foll alt row 3 (2, 2, 0, 0, 0) times, then in every foll 3rd row 0 (1, 2, 4, 5, 6) times. 26 (28, 30, 32, 34, 36) sts.

Work 1 (2, 2, 2, 2, 2) rows. 10 (12, 15, 17, 20, 23) rows in all.

Shape Raglan

Row 1: Using M for rem, sl st in first tr, (1dc, 1ch) in next tr, (Dec) 1 (1, 1, 1, 1, 0) times, (dDec) 0 (0, 0, 0, 0, 1) times, 1tr in each tr to last 4 (4, 4, 4, 4, 5) sts, (Dec) 1 (1, 1, 1, 1, 0) times, (dDec) 0 (0, 0, 0, 0, 1) times, 1tr in next tr, turn, leaving last st unworked. 22 (24, 26, 28, 30, 30) sts.

Row 2: (1dc, 1ch) in first st, Dec, 1tr in each tr to last 3 sts, Dec, 1tr in last st. 20 (22, 24, 26, 28, 28) sts.

Rep last row until 8 sts rem.
Fasten off.

MAKING UP

Do not press.

Join back and right front raglan seams. Join side and sleeve seams, matching stripes.

BUTTON BAND

Using 4.00mm hook and M, work a row of tr along front edge of left sleeve raglan. Sew on buttons. Sew in ends. Fasten through fabric of front as pictured.

Patons

Ph: 1800 337 032

www.patonsyarns.com.au

Triangle Cushion

Design by Panda Yarns

YARN

- 1 ball each 100gm Panda Magnum 8ply in 1013 Cream, 381 Fuchsia, 362 Lilac, 378 Orange, 336 Inca Gold, 334 Fawn
- 65cm square cushion insert

NEEDLES AND TOOLS

- 4.00mm knitting needles
- Wool sewing needle

MEASUREMENTS

Size 65cm x 65cm

TENSION

Triangle measures 18cm wide and 18cm long, using 4.00mm needles

WORKING PATTERN

TRIANGLE

Using 4.00mm needles and selected colour, leaving a 50cm end for seaming, cast on 38 sts.

Work 3 rows garter st (every row knit, first row is WS).

Row 4: K1, K2tog, knit to last 3 sts, K2tog, K1. 36 sts.

Knit 5 rows.

Dec one st (as before) at each end of next row, then in every foll 6th row until 28 sts rem, then in every foll 4th row until 6 sts rem.

Knit 3 rows.

Row 76: K1, (K2tog) twice, K1. 4 sts.

Row 77: Knit.

Row 78: (K2tog) twice. 2 sts.

Row 79: K2tog.

Fasten off, leaving a 50cm end for seaming.

CUSHION COVER

Make a total of 36 triangles in following colours:

Cream: make 7 triangles.

Fuchsia: make 5 triangles.

Lilac: make 6 triangles.

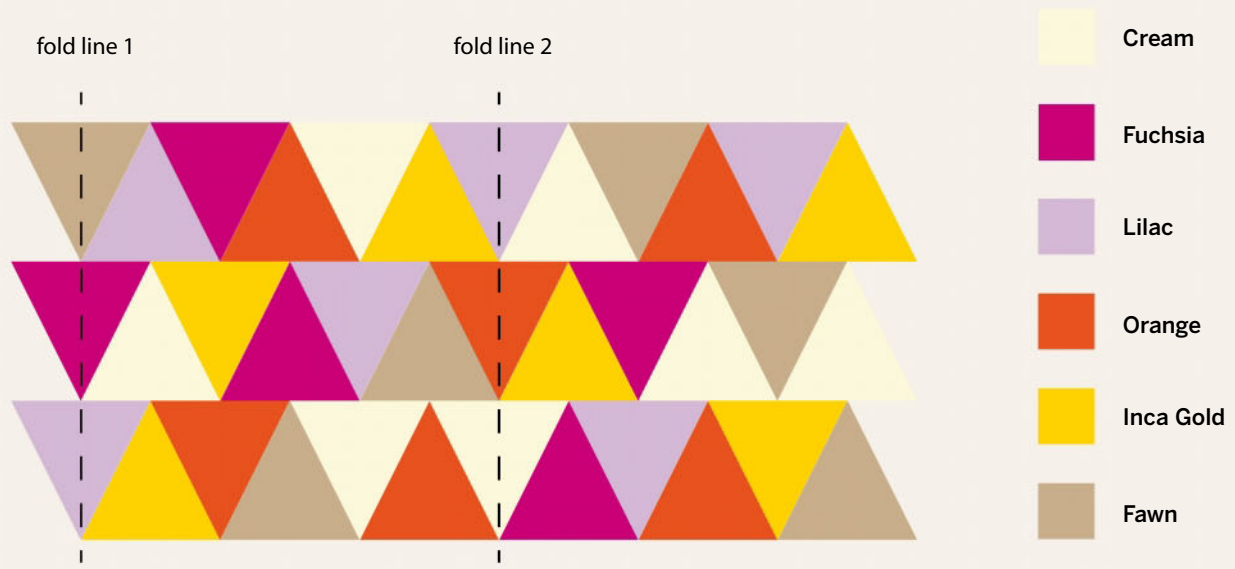
Orange: make 6 triangles.

Inca Gold: make 6 triangles.

Fawn: make 6 triangles.



ASSEMBLY DIAGRAM



MAKING UP

Do not press.

Using a flat seam and following assembly diagram, join triangles together into strips, then join strips

together. Fold on fold lines 1 and 2 and join to create a tube, leaving top and bottom edges open.

Sew bottom seam, place cushion insert inside, then join top seam,

enclosing insert.

Panda Yarns

Ph: 1800 337 032

www.pandayarns.com.au

australian alpaca yarn

Shop online for a big range of colours in our **alpaca ultimate** 100% Australian Alpaca Yarn available in 50gm balls or on cones in 1, 2, 4, 8 Ply and Boucle (10 Ply)

www.australionalpacayarn.com.au
Tel. 02 6227 3158 or 0429 783 575

We produce quality yarn by using only the best Australian alpaca fibre

Australian Knitting
Yarn • Embellishments • Patterns

Advertise here

Call Simon Mullen on (02) 4733 8482

Garter Stitch Yoke Dress

Designed by Patons

YARN

- 6, 7, 8, 9, 10 balls 50gm Patons Totem 8ply in Rust 4364

NEEDLES

- 4.00mm knitting needles
- 4.00mm circular knitting needle 60-80cm long
- 2 stitch-holders
- Wool sewing needle
- 3 buttons

MEASUREMENTS

Size: 2, 4, 6, 8, 10years

To fit chest: 55, 60, 65, 70, 75cm

Finished fit at underarms: 60, 65, 70, 75, 80cm

Garment length approx: 48, 55, 61, 65, 69cm

TENSION

22 sts by 30 rows over stocking st, on 4.00mm needles to 10cm

WORKING PATTERN

BACK

Using 4.00mm needles, cast on 92 (96, 102, 106, 112) sts.

Work 17 (21, 27, 31, 35) rows garter st (first row is wrong side).

Work 6 (8, 8, 8, 10) rows stocking st (beg with a knit row).

Shape Sides

Next Row: K1, sl 1, K1, pssso, knit to last 3 sts, K2tog, K1.

90 (94, 100, 104, 110) sts.

Work 5 (5, 7, 7, 7) rows.

Dec one st (as before) at each end of next row, then in every foll 6th (6th, 8th, 8th, 8th) row until 72 (88, 86, 96, 104) sts rem, then in every foll

8th (8th, 10th, 10th, 10th) row until 70 (74, 80, 84, 90) sts rem.

Cont without further shaping until Back measures 33 (39, 44, 46, 49) cm from beg, ending with a purl row.



◀ Garter Stitch Yoke Dress continued.

Shape Armholes

Cast off 4 (3, 3, 3, 5) sts at beg of next 2 rows. 62 (68, 74, 78, 80) sts.

Beg Turnings

Note: When pattern specifies turn, proceed as follows to avoid holes in work. Take yarn under needle and onto other side of work, slip next st onto right-hand needle, take yarn under needle and back to original position, slip st back onto left-hand needle, then turn and proceed as instructed in pattern.



Row 1: K2tog, K17 (20, 22, 23, 23), turn.

Row 2 and foll alt rows: Purl to end.

Row 3: K2tog, K13 (16, 19, 19, 19), turn.

Row 5: K2tog, K9 (12, 16, 15, 15), turn.

Row 7: K2tog, K6 (9, 13, 12, 12), turn.

Row 9: K2tog, K3 (6, 10, 9, 9), turn.

Row 10: Purl to end.

Sizes 4, 6, 8 and 10 years only:

Row 11: K2tog, K (3, 7, 6, 6), turn.

Row 12: Purl to end.

Sizes 6, 8 and 10 years only:

Row 13: K2tog, K (4, 3, 3), turn.

Row 14: Purl to end.

All sizes

57 (62, 67, 71, 73) sts.

Work other side as folls:

Row 1 and foll alt rows: Knit to last 2 sts, K2tog.

Row 2: P18 (21, 23, 24, 24), turn.

Row 4: P14 (17, 20, 20, 20), turn.

Row 6: P10 (13, 17, 16, 16), turn.

Row 8: P7 (10, 14, 13, 13), turn.

Row 10: P4 (7, 11, 10, 10), turn.

Sizes 4, 6, 8 and 10 years only:

Row 11: Knit to last 2 sts, K2tog.

Row 12: P (4, 8, 7, 7), turn.

Sizes 6, 8 and 10 years only:

Row 13: Knit to last 2 sts, K2tog.

Row 14: P (5, 4, 4), turn.

All sizes

Next Row: Knit to end. 52 (56, 60, 64, 66) sts.

Next Row: Purl across all sts.

Break off yarn.

Leave sts on a stitch-holder.

FRONT

Work as for Back until there are 6 rows less than Back to beg of armhole shaping, ending with a purl row.

Beg Turnings

Row 1: K23 (25, 27, 28, 30), turn.

Row 2 and foll alt rows: Purl to end.

Row 3: K21 (23, 25, 26, 28), turn.

Row 5: K19 (21, 23, 24, 26), turn.

Shape Armhole

Row 7: Cast off 4 (3, 3, 3, 5) sts, K14 (16, 18, 19, 19), including st rem on right-hand needle after casting off, turn.

Row 9: K2tog, K11 (13, 15, 15, 15), turn.

Row 11: K2tog, K9 (11, 13, 13, 13), turn.

Row 13: K2tog, K7 (9, 11, 11, 11), turn.

Row 15: K2tog, K5 (7, 9, 9, 9), turn.

Row 17: K2tog, K3 (5, 7, 7, 7), turn.

Row 18: Purl to end.

Sizes 4, 6, 8 and 10 years only:

Row 19: K2tog, K (3, 5, 5, 5), turn.

Row 20: Purl to end.

Sizes 6, 8 and 10 years only:

Row 21: K2tog, K3, turn.

Row 22: Purl to end.

All sizes. 61 (65, 70, 74, 78) sts.

Work other side as folls:

Row 1: Knit across all sts to end.

Row 2: P23 (25, 27, 28, 30), turn.

Rows 3, 5 and 7: Knit to end.

Row 4: P21 (23, 25, 26, 28), turn.

Row 6: P19 (21, 23, 24, 26), turn.

Shape Armhole

Row 8: Cast off 4 (3, 3, 3, 5) sts, P14 (16, 18, 19, 19), including st rem on right-hand needle after casting off, turn.

Row 9 and foll alt rows: Knit to last 2 sts, K2tog.

Row 10: P12 (14, 16, 16, 16), turn.

Row 12: P10 (12, 14, 14, 14), turn.

Row 14: P8 (10, 12, 12, 12), turn.

Row 16: P6 (8, 10, 10, 10), turn.

Row 18: P4 (6, 8, 8, 8), turn.

Sizes 4, 6, 8 and 10 years only:

Row 19: Knit to last 2 sts, K2tog.

Row 20: P (4, 6, 6, 6), turn.

Sizes 6, 8 and 10 years only:

Row 21: Knit to last 2 sts, K2tog.

Row 22: P4, turn.

All sizes:

Next Row: Knit to end. 52 (56, 60, 64, 66) sts.

Next Row: Purl across all sts.

Break off yarn.

YOKE

Note: A circular needle has been used to accommodate the large number of sts. Work backwards and forwards in rows not rounds.

With RS facing, slip first 23 (25, 27, 29, 30) sts of Front onto stitch-holder, then using 4.00mm circular needle, rejoin yarn and knit across rem 29 (31, 33, 35, 36) sts of Front, turn, cast on 26 (27, 28, 29, 32) sts loosely, turn, knit across sts from Back stitch-holder, turn, cast on 26 (27, 28, 29, 32) sts loosely, turn, knit across sts from Front stitch-holder, turn, cast on 6 sts. 162 (172, 182, 192, 202) sts. Working in garter st for rem, knit 7 (5, 7, 7, 9) rows.

Beg Shaping

Next Row: K2, yfwd, K2tog (buttonhole), K4, * K2tog, K8, rep from * to last 4 sts, K2tog, K2. 146 (155, 164, 173, 182) sts.

Knit 5 (7, 7, 9, 9) rows.

Next Row: K2, * K5, K2tog, K2, rep from * to end. 130 (138, 146, 154, 162) sts.

Knit 5 (5, 5, 7, 9) rows.

Sizes 4, 6 and 8 years only:

Next Row: K2, yfwd, K2tog (buttonhole), knit to end. Knit 1 row.

Next Row: K2, * K4, K2tog, K2, rep from * to end.

Sizes 2 and 10 years only:

Next Row: K2, yfwd, K2tog (buttonhole), K2, * K2tog, K6, rep from * to last 4 sts, K2tog, K2.

All sizes. 114 (121, 128, 135, 142) sts.

Knit 5 (5, 5, 7, 9) rows.

Next Row: K2, * K3, K2tog, K2, rep from * to end. 98 (104, 110, 116, 122) sts.

Knit 5 (5, 5, 7, 9) rows.

Next Row: K2, yfwd, K2tog (buttonhole), * K2tog, K4, rep from * to last 4 sts, K2tog, K2. 82 (87, 92, 97, 102) sts, 3 buttonholes in all.

Knit 3 rows.

Next Row: K3 (13, 8, 18, 13), * K2tog, K13 (13, 23, 18, 13), rep from * to last 4 (14, 9, 19, 14) sts, K2tog, K2 (12, 7, 17, 12). 76 (82, 88, 93, 96) sts.

Knit 1 row.

Cast off loosely.

MAKING UP

Do not press.

Join side seams. Sew end of left front yoke edge underneath right front yoke edge.

Sew on buttons.

Patons

Ph: 1800 337 032

www.patonsyarns.com.au

www.biggandesign.com

Premium First Cross
4ply & DK Australian Merino
in 64 Brilliant Colours

Urban Beanie

Design by Jo Sharp.

YARN

- 2 x ball 50g Jo Sharp Silkroad Ultra in Cardomom 710

NEEDLES

- 7.00mm needles

MEASUREMENTS

One size fits all.

TENSION

13 sts and 16 rows measured over 10cm (approx. 4") st st using 7.00mm needles.

WORKING PATTERN

BEANIE

Using 7.00mm needles, cast on 64 sts.

Work in rib as follows:

Row 1: *K1, p1; rep from * to end.

Row 2: Knit.

Rep these 2 rows until length measures 12cm, ending on a WS row. Now cont working in k1, p1 rib until length (incl band) measures 24cm, ending on a WS row.

Next Row: RS dec - * K2tog, k1, p1; rep from * to end.

Next Row: WS dec - * K2tog, p1; rep from * to end.

Rib 4 rows.

Next Row: RS dec - *K3tog, p1; rep from * to end.

Next Row: WS dec - *K3tog, p1; rep from * to end.

Break yarn and thread through rem sts (8 sts).

Pull tightly and fasten off securely.

Join seam using edge to edge st.

Jo Sharp

www.josharppatterns.com



Aussie
made



~ trusted since 1923 ~

DREAMTIME FINE MERINO

SOFT SKIN LOVES SUPER SOFT MERINO

These patterns and more are available in Merino Baby, book 1106

Phone 1800 337 032 for your nearest stockist or visit
patonsyarns.com.au  /auspinners  @auspinners



Patterns



Vintage Crochet Blanket— see page 56 for pattern instructions



Wrap around Skirt — see page 58 for pattern instructions





Silk Lace Drawstring Bag – see page 62 for pattern instructions



Men's Jumper — see page 63 for pattern instructions



Child's Jumper with Front Cables

Design by Patons

YARN

- 6, 7, 9, 10, 12 balls 50gm Patons Jet 12ply in Heathered Denim 837

NEEDLES

- 5.50mm knitting needles
- 5.00mm knitting needles
- 2 stitch-holders
- Cable needle
- Wool sewing needle

MEASUREMENTS

Size: 2, 4, 6, 8, 10years
 To fit chest: 55, 60, 65, 70, 75cm
 Finished fit: 65, 70, 77, 84, 89cm
 Garment length: 40, 44, 48, 52, 56cm
 Sleeve length: 26, 31, 37, 42, 44cm

TENSION

16.5 sts by 22 rows over stocking st, on 5.50mm needles to 10cm

SPECIAL ABBREVIATIONS

C4B = Slip next 2 sts onto cable needle and leave at back of work, K2, then K2 from cable needle.
C4F = Slip next 2 sts onto cable needle and leave at front of work, K2, then K2 from cable needle.

STITCH GUIDE

BACK

Using 5.00mm needles, cast on 58 (62, 66, 74, 78) sts.

Beg Lower Band

Row 1: KO (2, 0, 2, 0), * P2, K2, rep from * to last 2 (0, 2, 0, 2) sts, P2 (0, 2, 0, 2).

Row 2: PO (2, 0, 2, 0), * K2, P2, rep from * to last 2 (0, 2, 0, 2) sts, K2 (0, 2, 0, 2).

Rep last 2 rows 5 times, dec 2 (2, 0, 2, 2) sts evenly across last row. 56 (60, 66, 72, 76) sts, 12 rows rib in all. Change to 5.50mm needles.

Work in stocking st until Back measures 26 (29, 32, 34, 37) cm from beg, ending with a purl row.

Shape Armholes

Cast off 3 (3, 4, 4, 5) sts at beg of next 2 rows. 50 (54, 58, 64, 66) sts. Dec one st at each end of next row, then in every foll alt row until 44 (46, 50, 54, 54) sts rem. Work 21 (23, 25, 27, 27) rows.

Shape Back Neck

Row 1: K12 (13, 14, 15, 15), turn. Cont on these 12 (13, 14, 15, 15) sts for right side of back neck.

Row 2: P2tog, purl to end.

Shape Shoulder

Next row: Cast off 5 (6, 6, 7, 7) sts, knit to last 2 sts, K2tog.

Work 1 row.

Cast off rem 5 (5, 6, 6, 6) sts.

Slip next 20 (20, 22, 24, 24) sts onto a stitch-holder and leave for neckband.

With right side facing, join yarn to rem 12 (13, 14, 15, 15) sts and knit to end.

Cont on these 12 (13, 14, 15, 15) sts for left side of back neck.

Next row: Purl to last 2 sts, P2tog.

Next row: K2tog, knit to end.

Shape Shoulder

Next row: Cast off 5 (6, 6, 7, 7) sts, purl to end.

Work 1 row.

Cast off rem 5 (5, 6, 6, 6) sts.

FRONT

Using 5.00mm needles, cast on 58 (62, 66, 74, 78) sts.

Beg Lower Band

Work 11 rows rib as for Back.

Row 12: Rib 18 (20, 22, 24, 26), inc in each of next 2 sts, rib 18 (18, 18, 22, 22), inc in each of next 2 sts, rib 18 (20, 22, 24, 26). 62 (66, 70, 78, 82) sts.

Change to 5.50mm needles.

Beg Cable Patt

Row 1: K16 (18, 20, 22, 24), P2, K4, P2, K14 (14, 14, 18, 18), P2, K4, P2, knit to end.

Row 2: Knit all knit sts and purl all purl sts as they appear.

Row 3: K16 (18, 20, 22, 24), P2, C4B, P2, K14 (14, 14, 18, 18), P2, C4F, P2, knit to end.

Row 4: As 2nd row.

Rows 1 to 4 incl form patt.

Cont in patt until Front measures same as Back to beg of armholes, working last row on wrong side.

Shape Armholes

Keeping patt correct, cast off 3 (3, 4, 4, 5) sts at beg of next 2 rows. 56 (60, 62, 70, 72) sts.

Dec one st at each end of next row, then in every foll alt row until 50 (52, 54, 60, 60) sts rem.

Work 7 (9, 9, 11, 11) rows.

Shape Neck

Next row: Patt19 (20, 21, 24, 24), turn.

Cont on these 19 (20, 21, 24, 24) sts for left side of neck.

Dec one st at neck edge in next 4 (4,



2, 6, 6) rows, then in every foll alt row until 11 (12, 13, 14, 14) sts rem. Work 3 rows.

Shape Shoulder

Next row: Cast off 5 (6, 6, 7, 7) sts, knit to last 2 sts, K2tog.

Work 1 row.

Cast off rem 5 (5, 6, 6, 6) sts.

Slip next 12 sts onto stitch-holder and leave for neckband. With right side facing, join yarn to rem sts and patt to end.

Cont on these 19 (20, 21, 24, 24) sts for right side of neck.

Dec one st at neck edge in next 4 (4, 2, 6, 6) rows, then in every foll alt row until 11 (12, 13, 14, 14) sts rem, then in foll 4th row once. 10 (11, 12, 13, 13) sts.

Shape Shoulder

Next row: Cast off 5 (6, 6, 7, 7) sts, purl to end.

Work 1 row.

Cast off rem 5 (5, 6, 6, 6) sts.

SLEEVES

Using 5.00mm needles, cast on 34 (34, 38, 38, 38) sts.

Beg Cuff

Work 12 rows rib as for lower band of Back, dec 2 (0, 2, 2, 0) sts evenly across last row. 32 (34, 36, 36, 38) sts.

Change to 5.50mm needles.

Work 4 rows stocking st.

Row 5: K2, M1, knit to last 2 sts, M1, K2. 34 (36, 38, 38, 40) sts.

Cont in stocking st, inc one st (as before) at each end of every foll 4th ▶



◀ **Child's Jumper with Front Cables**
continued.



(6th, 8th, 8th, 10th) row until there are 38 (40, 42, 42, 42) sts, then in every foll 6th (8th, 10th, 10th, 12th) row until there are 46 (48, 50, 52, 52) sts.
Cont without further shaping until Sleeve measures 26 (31, 37, 42, 44) cm from beg, ending with a purl row.

Shape Top

Cast off 2 (2, 2, 3, 3) sts at beg of next 2 rows. 42 (44, 46, 46, 46) sts.
Dec one st at each end of next row, then in every foll alt row until 28 (28, 32, 24, 24) sts rem, then in every row until 18 sts rem.
Cast off 5 sts at beg of next 2 rows.
Cast off rem 8 sts.

NECKBAND

Join right shoulder seam. With right side facing and using 5.00mm needles, knit up 12 (12, 13, 14, 14)

sts evenly along left side of front neck, knit across sts from front stitch-holder, knit up 11 (11, 12, 13, 13) sts evenly along right side of front neck to shoulder, knit up 3 sts evenly along right side of back neck, knit across sts from back stitch-holder, then knit up 4 sts evenly along left side of back neck. 62 (62, 66, 70, 70) sts.

Next row: P3, * K2, P2, rep from * last 3 sts, K3.

Rep last row 10 times.
Cast off loosely in rib.

MAKING UP

Do not press. Join left shoulder and neckband seam. Join side and sleeve seams. Sew in sleeves. If desired, fold cuffs.

Patons

Ph: 1800 337 032

www.patonsyarns.com.au

Child's Crochet Jumper

Design by Patons

YARN

Colourway 1

- 3, 4, 5, 6, 7 balls 50gm Patons Cotton Blend 8ply Main colour (M) – White 01
- 1, 1, 1, 1, 2 balls 50gm Patons Cotton Blend 8ply Contrast colour 1 (C1) – Cloud 34
- 1, 1, 1, 1, 2 balls 50gm Patons Cotton Blend 8ply Contrast colour 2 (C2) – Denim 21
- 1, 1, 1, 1, 2 balls 50gm Patons Cotton Blend 8ply Contrast colour 3 (C3) – Apple Green 16
- 1, 1, 1, 1, 2 balls 50gm Patons Cotton Blend 8ply Contrast colour 4 (C4) – Orange 07
- 1, 1, 1, 1, 2 balls 50gm Patons Cotton Blend 8ply Contrast colour 5 (C5) – Aqua 17
- 1, 1, 1, 1, 2 balls 50gm Patons Cotton Blend 8ply Contrast colour 6 (C6) – Persian Green 30

Colourway 2

- 3, 4, 5, 6, 7 balls 50gm Patons Cotton Blend 8ply Main colour (M) – White 01
- 1, 1, 1, 1, 2 balls 50gm Patons Cotton Blend 8ply Contrast colour 1 (C1) – Flamingo 25
- 1, 1, 1, 1, 2 balls 50gm Patons Cotton Blend 8ply Contrast colour 2 (C2) – Mineral 29
- 1, 1, 1, 1, 2 balls 50gm Patons Cotton Blend 8ply Contrast colour 3 (C3) – Amethyst 22
- 1, 1, 1, 1, 2 balls 50gm Patons Cotton Blend 8ply Contrast colour 4 (C4) – Apple Green 16
- 1, 1, 1, 1, 2 balls 50gm Patons Cotton Blend 8ply Contrast colour 5 (C5) – Red 08
- 1, 1, 1, 1, 2 balls 50gm Patons Cotton Blend 8ply Contrast colour 6 (C6) – Coral 26

NEEDLES

- 4.00mm crochet hook
- Wool sewing needle

TENSION

5 groups to 9.5cm by 10 rows to 11cm over patt, on 4.00mm hook

SPECIAL ABBREVIATION

Group = 3tr in specified st or sp.

MEASUREMENTS

Size, 2, 4, 6, 8, 10 years
To fit chest, 55, 60, 65, 70, 75cm
Finished fit, 64, 68, 76, 80, 87cm
Garment length, 33, 37, 41, 45, 49cm
Sleeve length, 17, 21, 25, 28, 30cm

STITCH GUIDE

JUMPER

(worked in one piece, beg at neck edge)





◀ Child's Crochet Jumper continued.

Beg Yoke

Note – 3ch at beg of each round counts as 1tr throughout.

Using 4.00mm hook and M, loosely make 84 (90, 90, 96, 114) ch, and taking care not to twist ch, join with a sl st in first ch to make a circle.

Round 1: 3ch, 1tr in same ch as sl st, * (miss 2ch, group in next ch) 9 (10, 10, 11, 13) times, miss 2ch, 2tr in next ch, (miss 2ch, group in next ch) 3 (3, 3, 3, 4) times *, miss 2ch, 2tr in next ch, rep from * to * once, miss 2ch, sl st in 3rd ch at beg, using C1, sl st in sp before next tr. 9 (10, 10, 11, 13) groups for Back and Front; 3 (3, 3, 3, 4) groups for Sleeves.

Note – Do not break off M at end of rounds but carry up loosely on inside of yoke until needed again. Break off each contrast colour at end of round.

Round 2: Using C1, 3ch, 1tr in same sp as last sl st, * miss 1tr, 2tr in sp before next tr, (miss 3tr, group in sp before next tr) 8 (9, 9, 10, 12) times, miss 3tr, 2tr in sp before next tr, miss 1tr, 2tr in sp before next tr (corner), miss 1tr, 2tr in sp before next tr, (miss 3tr, group in sp before next tr) 2 (2, 2, 2, 3) times *, miss 3tr, 2tr in sp before next tr, miss 1tr, 2tr in sp before next tr (corner), rep from * to * once, miss 3tr, 2tr in sp before next tr, sl st in 3rd ch at beg, using M, sl st in sp before first tr.

Working rem in stripes of 1 round each M, C2, M, C3, M, C4, M, C5, M, C6, M and C1, proceed as folls –

Round 3: 3ch, 1tr in same sp as last sl st, * (miss 3tr, group in sp before next tr) 9 (10, 10, 11, 13) times,

miss 3tr, 2tr in sp before next tr (corner), (miss 3tr, group in sp before next tr) 3 (3, 3, 3, 4) times, miss 3tr *, 2tr in sp before next tr (corner), rep from * to * once, sl st in 3rd ch at beg, using next colour, sl st in sp before next tr.

Round 4: 3ch, 1tr in same sp as last sl st, * miss 1tr, 2tr in sp before next tr, group in each sp between groups to last group before corner, miss group, 2tr in sp before corner, miss 1tr, 2tr in sp before next tr (corner), rep from * 3 times, omitting corner 2tr at end of last rep, sl st in 3rd ch at beg, using next colour, sl st in sp before next tr.

Round 5: 3ch, 1tr in same sp as last sl st, * miss 1tr, group in sp before next tr, miss 2tr, group in sp before next tr, group in each sp between groups to 5tr before corner, miss group, group in sp before next tr, miss 2tr, group in sp before corner, miss 1tr, 2tr in sp before next tr (corner), rep from * 3 times, omitting corner 2tr at end of last rep, sl st in 3rd ch at beg, using next colour, sl st in sp before next tr. 11 (12, 12, 13, 15) groups each for Back and Front; 5 (5, 5, 5, 6) groups for Sleeves.

Round 6: As round 4.

Round 7: 3ch, 1tr in same sp as last sl st, * miss 3tr, group in sp before next tr, group in each sp between groups to 2tr before corner, miss 3tr, 2tr in sp before next tr (corner), rep from * 3 times, omitting corner 2tr at end of last rep, sl st in 3rd ch at beg, using next colour, sl st in sp before next tr.

Rep rounds 4 to 7 incl 0 (0, 0, 1, 2) times, then rounds 4 and 5, 3 (3, 4, 3, 2) times. 17 (18, 20, 21, 23) groups each for Back and Front; 11 (11, 13, 13, 14) groups for Sleeves.

Beg Body

Round 1: 3ch, 1tr in same sp as last sl st, * (group in sp between groups) 16 (17, 19, 20, 22) times, miss 4tr, 1tr in sp before next tr, miss next 11 (11, 13, 13, 14) groups (for Sleeve) *, 2tr in sp before next tr, rep from * to * once, 1tr in sp before corner, sl st in 3rd ch at beg. Fasten off.

Round 2: Join next colour with a sl st in any sp between groups, 3ch, 2tr in same place as sl st, * miss 3tr, group in sp before next tr, rep from * to end, sl st in 3rd ch at beg. 34 (36, 40, 42, 46) groups. Fasten off.

Rep round 2 until Jumper measures 33 (37, 41, 45, 49) cm from foundation ch.

Beg Sleeve

** With right side facing, join appropriate colour with a sl st in corner sp at beg of opening for one sleeve.

Round 1: 3ch, 1tr in same st as sl st, * miss 3tr, group in sp before next tr, rep from * to last 3tr of opening for sleeve, miss 3tr, 1tr in sp before next tr, sl st in 3rd ch at beg. Fasten off.

Round 2: Join next colour with a sl st in any sp between groups, 3ch, 2tr in same place as sl st, * miss 3tr, group in sp before next tr, rep from * to end, sl st in 3rd ch at beg. 11 (11, 13, 13, 14) groups. Fasten off.

Keeping stripes correct, rep round 2 until Sleeve measures 17 (21, 25, 28, 30) cm from underarm. **

Rep from ** to ** for other sleeve.

MAKING UP

Do not press. Using a flat seam, close gaps at underarms.

Using 4.00mm hook and M, work 1 round dc evenly around neck edge, sl st in first dc, fasten off.

Patons

Ph: 1800 337 032

www.patonsyarns.com.au



Girl's Short Sleeved Cardigan

YARN

- 3, 3, 4, 5, 6 balls 50g Patons Cotton Blend 8 Ply in Wild Rose 39
- 7 buttons
- 2 x appliqué motifs and 50 (55, 65, 75, 85) cm length of sequin trim (optional)

NEEDLES AND TOOLS

- 3.25mm knitting needles
- 4.00mm knitting needles
- 2 x stitch holders.
- Wool needle

MEASUREMENTS,,

Size: 3-6, 6-12 months, 1-2 years, 3-4 years, 5-6 years

To Fit Chest,cm,45,,50,,55,60,65

Actual Size (at underarm): 50, 55, 61, 66, 72cm,

Length (approx, when worn): 26, 30, 34, 39, 43cm

Sleeve Length: 4, 5, 5, 6, 6cm

TENSION

22 sts and 30 rows to 10 cm over stocking st, using 4.00mm needles.

WORKING PATTERN

BACK

Using 3.25mm needles, cast on 54 (62, 66, 74, 78) sts.

Row 1: K2, * P2, K2, rep from * to end.

Row 2: P2, * K2, P2, rep from * to end.

Last 2 rows form rib.

Work a further 4 rows rib, inc (dec, inc, dec, inc) one st in centre of last row. 55 (61, 67, 73, 79) sts, 6 rows rib in all.

Change to 4.00mm needles.

Work in stocking st until Back measures 15 (18, 21, 25, 28) cm from beg, ending with a purl row.

Shape Armholes

Cast off 3 (4, 4, 5, 5) sts at beg of next 2 rows. 49 (53, 59, 63, 69) sts.

Dec one st at each end of next 3 rows, then in every foll alt row until 39 (43, 47, 51, 55) sts rem.

Cont without further shaping until armhole measures 11 (12, 13, 14, 15) cm from cast-off, ending with a purl row.





◀ **Girl's Short Sleeved Cardigan continued.**

Cast off all sts, placing coloured threads either side of centre 25 (27, 29, 29, 31) sts to indicate back neck.

LEFT FRONT

Using 3.25mm needles, cast on 27 (31, 35, 35, 39) sts.

Row 1: K2, * P2, K2, rep from * to last st, K1.

Row 2: K1, P2, * K2, P2, rep from * to end.

Last 2 rows form rib for Left Front. Work a further 4 rows rib, dec 1 (2, 3, 0, 1) sts evenly across last row. 26 (29, 32, 35, 38) sts, 6 rows rib in all. Change to 4.00mm needles. Work 4 rows stocking st.

Divide For Pocket

Next Row: (RS) K10 (11, 12, 13, 14), turn, leaving rem 16 (18, 20, 22, 24) sts on a stitch-holder for pocket front.

Next Row: Cast on 16 (18, 20, 22, 24) sts (for pocket lining), purl to end. 26 (29, 32, 35, 38) sts.

Work 21 (21, 25, 25, 29) rows stocking st, ending with a knit row. Break off yarn and leave sts on a second stitch-holder.

With RS facing, rejoin yarn to 16 (18, 20, 22, 24) sts left on first stitch-holder and work 23 (23, 27, 27, 31) rows stocking st for pocket front, ending with a knit row.

Next Row: (WS) With WS of pocket front sts facing RS of pocket lining

sts, purl first st of pocket front tog with first st of pocket lining sts, cont working sts tog across rem 15 (17, 19, 21, 23) sts of pocket front with corresponding sts of pocket lining, then purl across rem 10 (11, 12, 13, 14) sts of side front section. 26 (29, 32, 35, 38) sts, thus completing pocket.

Cont in stocking st until Left Front measures same as Back to beg of armhole shaping, ending with a purl row.

Shape Armhole

Cast off 3 (4, 4, 5, 5) sts at beg of next row. 23 (25, 28, 30, 33) sts. Work 1 row.

Dec one st at armhole edge in every row 3 times, then in every foll alt row until 18 (20, 22, 24, 26) sts rem. Cont without shaping until there are 17 (17, 17, 19, 19) rows less than Back to final cast-off, ending with a knit row.

Shape Neck

Cast off 5 (6, 7, 6, 7) sts at beg of next row. 13 (14, 15, 18, 19) sts. Dec one st at neck edge in every row 5 times, then in every foll alt row until 7 (8, 9, 11, 12) sts rem. Work 9 rows. Cast off rem sts for shoulder.

RIGHT FRONT

Using 3.25mm needles, cast on 27 (31, 35, 35, 39) sts.

Row 1: K3, * P2, K2, rep from * to end.

Row 2: P2, * K2, P2, rep from * to last st, K1.

These 2 rows form rib for Right Front. Work a further 4 rows rib, dec 1 (2, 3, 0, 1) sts evenly across last row. 26 (29, 32, 35, 38) sts, 6 rows rib in all. Change to 4.00mm needles. Work 4 rows stocking st.

Divide For Pocket

Next Row: (RS) K16 (18, 20, 22, 24), turn, leaving rem 10 (11, 12, 13, 14) sts on a stitch-holder for side front.

Work a further 22 (22, 26, 26, 30) rows stocking st on these sts for pocket front, ending with a knit row.

Break off yarn and leave sts on a second stitch-holder.

With RS facing, rejoin yarn to 10 (11, 12, 13, 14) sts left on first stitch-holder, cast on 16 (18, 20, 22, 24) sts (for pocket lining) and knit to end. 26 (29, 32, 35, 38) sts.

Work 22 (22, 26, 26, 30) rows stocking st, ending with a knit row.

Next Row: (WS) Purl first 10 (11, 12, 13, 14) sts of side front section, with WS of pocket front sts against RS of pocket lining sts, purl first st of pocket front tog with first st of pocket lining, cont working sts tog across rem 15 (17, 19, 21, 23) sts of pocket front with corresponding sts of pocket lining. 26 (29, 32, 35, 38) sts. Cont in stocking st until Right Front measures same as Back to beg of armhole shaping, ending with a purl row. Work 1 row.

Shape Armhole

Cast off 3 (4, 4, 5, 5) sts at beg of next row. 23 (25, 28, 30, 33) sts. Dec one st at armhole edge in next 3 rows, then in every foll alt row until 18 (20, 22, 24, 26) sts rem. Cont without shaping until there are 18 (18, 18, 20, 20) rows less than Back to final cast-off, ending with a purl row.

Shape Neck

Cast off 5 (6, 7, 6, 7) sts at beg of next row. 13 (14, 15, 18, 19) sts. Work 1 row. Dec one st at neck edge in next 5 rows, then in every foll alt row until 7 (8, 9, 11, 12) sts rem. Work 9 rows. Cast off rem sts for shoulder.

SLEEVES

Using 3.25mm needles, cast on 42 (46, 50, 50, 54) sts. Work in 6 rows rib as for Back, inc (inc, dec, inc, dec) one st in centre of last row. 43 (47, 49, 51, 53) sts. Change to 4.00mm needles. Work 2 rows stocking st. Cont in stocking st, inc one st at each end of next row, then in every foll alt row until there are 47 (51, 53, 57, 59) sts.

Cont without further inc until Sleeve measures 4 (5, 5, 6, 6) cm from beg, ending with a purl row.

Shape Top

Cast off 3 (4, 4, 5, 5) sts at beg of next 2 rows. 41 (43, 45, 47, 49) sts. Dec one st at each end of next 5 rows, then in every foll alt row until 21 sts rem, then in next 3 rows. 15 sts. Cast off 3 sts at beg of next 2 rows. Cast off rem 9 sts.

NECKBAND

Using mattress st, join shoulder seams. With RS facing, using 3.25mm needles and beg and ending at front opening edges, knit up 20 (21, 22, 23, 24) sts evenly along right side of neck, knit up 24 (26, 28, 30, 32) sts evenly across back neck, then knit up 20 (21, 22, 23, 24) sts evenly along left side of neck. 64 (68, 72, 76, 80) sts.

Row 1: K1, * P2, K2, rep from * to last 3 sts, P2, K1.

Row 2: K3, * P2, K2, rep from * to last st, K1.
Rep last 2 rows twice.
Cast off in rib.

LEFT FRONT BAND

With RS facing and using 3.25mm needles, knit up 66 (74, 82, 90, 98) sts evenly along left front opening edge, incl side edge of neckband.

Row 1: P2, * K2, P2, rep from * to end.

Row 2: K2, * P2, K2, rep from * to end.

Rep last 2 rows twice.
Cast off in rib.

RIGHT FRONT BAND

With RS facing and using 3.25mm needles, knit up 66 (74, 82, 90, 98) sts evenly along right front opening edge, incl side edge of neckband. Work 2 rows rib as for Left Front Band.

Row 3: Rib 2 (3, 4, 2, 3), * yrn, work 2tog (to make a buttonhole), rib 8 (9, 10, 12, 13), rep from * 5 times, yrn,

work 2tog, rib to end. 7 buttonholes in all.
Work a further 3 rows rib.
Cast off in rib.

POCKET BORDERS

With RS facing and using 3.25mm needles, knit up 22 (22, 26, 26, 30) sts evenly along side edge of pocket opening.

Work 6 rows rib as for Left Front Band. Cast off in rib.

MAKING UP

Join side and sleeve seams. Sew in sleeves. Slip-stitch pocket linings in place on WS. Sew ends of pocket borders in position. If desired, attach sequin trim to either side of front border and appliqué motifs to pockets, as pictured. Sew on buttons.

Patons

Ph: 1800 337 032

www.patonsyarns.com.au

MISSED A COPY?

Please send me: AK8-2 AK8-3 AK8-4
 AK9-1 AK9-2 AK9-3

\$9.95 each (Plus \$2.95 P & H for 1-2 copies, 3 or more \$4.95)

Name:

Address:

Suburb:

State: P/code:

Payment options:

1. I enclose a cheque/money order made payable to:

Woodlands Publishing Pty Ltd for \$.....

2. Please debit my Visa Mastercard

Card No ____/____/____/____ Expiry: ____/____

Card holder's name:

Signature:



Post to: Australian Knitting Magazine
PO Box 8035, Glenmore Park NSW 2745



Little Shrug & Hat

Design by Gitta Schrade for Naturally Yarns

YARN

2, 2, 2, 3, 3, 4 balls 50gm Loyal Baby Prints DK 8ply in shade # 2005

NEEDLES

3.75mm knitting needles
4.00mm knitting needles
6 stitch markers

MEASUREMENTS

Size: New, 3mts, 6-9, 12-18, 2-3, 3-4 years

To fit chest: 36, 41, 46, 51, 56, 61cm
Finished fit: 36, 42, 48, 56, 64, 68cm
Garment length from cuff to cuff: 15, 17, 20, 22, 25, 27cm
Hat Circumference: 33, 35.5, 39.5, 42, 44, 46cm

TENSION

22 sts by 30 rows over Stocking Stitch on 4mm needles to 10cm

SPECIAL ABBREVIATIONS

M1 – make 1 stitch - pick up running thread from front to back, k it through the back loop;
skp - slip 1 stitch, knit 1 stitch, pass the slipped stitch over.

STITCH GUIDE

NOTE: For pattern print consistency, knit all balls either from the inside or the outside. The individual look of an item depends on the size of the garment. The finished garment may vary in appearance compared with the leaflet image. Every garment is unique.

SHRUG

This garment is worked from cuff to cuff.
With 3.75mm needles, cast on 29 (31, 33, 35, 37, 39) sts.

K1, p1 rib for 10 (10, 12, 12, 14, 14) rows.

Change to 4.00mm needles.

****Next Row:** RS - P3, M1, k to last 3 sts, M1, p3. 31 (33, 35, 37, 39, 41) sts.

Next Row: WS - P all sts.

Next Row: RS - P3, k to last 3 sts, p3.

Next Row: WS - P all sts.**

Rep from ** to ** until 35 (39, 45, 49, 55, 59) sts on needle.

Place marker each end of last row to mark end of shaping.

Keeping first and last 3 sts correct, cont straight until piece measures 18 (21, 24, 28, 32, 34) cm from beg, end with a WS row (adjust length here if desired).

Place marker each end of last row to mark centre back.

Count rows from centre back marker to end of sleeve inc marker and work that same amount of rows.

Place marker each end of last row to mark beg of sleeve dec shaping.

****Next Row:** RS)- P3, skp, k to last 5 sts, k2tog, p3. 33 (37, 43, 47, 53, 57) sts.

Next Row: WS - P all sts.

Next Row: RS - P3, k to last 3 sts, p3.

Next Row: WS - P all sts. **

Rep from ** to ** until 29 (31, 33, 35, 37, 39) sts on needle.

Now compare length to first sleeve and work extra straight rows if needed to achieve same length to rib, end with a WS row.

Change to 3.75mm needles.

K1, p1 rib for 10 (10, 12, 12, 14, 14) rows.

Cast off loosely in rib.

MAKING UP

Join ribbed cuffs plus extra 4 (5, 7, 9, 11, 12) cm or as desired.

HAT

With 3.75mm needles, cast on 68 (74, 80, 86, 92, 98) sts.

K1, p1 rib for 8 (8, 8, 10, 10, 12) rows.

Change to 4.00mm needles.

Stst until piece measures 11 (12, 13, 14, 15, 16) cm from beg, end with a WS row.

Shape Top

Next Row: RS - K2; *k2tog, k9 (10, 11, 12, 13, 14) sts; rep from * to end. 62 (68, 74, 80, 86, 92) sts.

Next Row: WS - Purl.

Next Row: RS - K2; *k2tog, k8 (9, 10, 11, 12, 13) sts; rep from * to end. 56 (62, 68, 74, 80, 86) sts.

Next Row: WS - Purl.

Next Row: RS - K2; *k2tog, k7 (8, 9, 10, 11, 12) sts; rep from * to end. 50 (56, 62, 68, 74, 80) sts.

Next Row: WS - Purl.

Next Row: RS - K2; *k2tog, k6 (7, 8, 9, 10, 11) sts; rep from * to end. 44 (50, 56, 62, 68, 74) sts.

Next Row: WS - Purl.

Next Row: RS - K2; *k2tog, k5 (6, 7, 8, 9, 10) sts; rep from * to end. 38 (44, 50, 56, 62, 68) sts.

Next Row: WS - Purl.

Next Row: RS - K2; *k2tog, k4 (5, 6, 7, 8, 9) sts; rep from * to end. 32 (38, 44, 50, 56, 62) sts.

Next Row: WS - Purl.

Next Row: RS - K2; *k2tog, k3 (4, 5, 6, 7, 8) sts; rep from * to end. 26 (32, 38, 44, 50, 56) sts.

Next Row: WS - Purl.

Next Row: RS - K2; *k2tog,
k2 (3, 4, 5, 6, 7) sts; rep from
* to end. 20 (26, 32, 38, 44, 50) sts.
Next Row: WS - Purl.

**Sizes 6-9 months (12-18 months,
2-3 years, 3-4 years) only**

Next Row: RS - K2; *k2tog,
k3 (4, 5, 6) sts; rep from
* to end. 26 (32, 38, 44) sts.
Next Row: WS - Purl.

**Sizes 12-18 months (2-3 years,
3-4 years) only**

Next Row: RS - K2; *k2tog,
k3 (4, 5) sts; rep from * to end. 26
(32, 38) sts.
Next Row: WS - Purl.

**Sizes 2-3 years (3-4 years)
only**

Next Row: RS - K2; *k2tog,
k3 (4) sts; rep from * to end.
26 (32) sts.
Next Row: WS - Purl.

Size 3-4 years only

Next Row: RS - K2; *k2tog,
k3 sts; rep from * to end. 26 sts.
Next Row: WS - Purl.

ALL sizes

Next Row: RS - K2tog across
row - 10 (13, 13, 13, 13, 13) sts.

Next Row: WS - Purl.

Break yarn leaving longer end, thread
yarn through rem sts, draw up tightly
and fasten off.

Join back seam.

Wentworth Distributors NZ Ltd
Free phone AU: 1800 150 542
Free phone NZ: 0800 738 998
www.naturallyyarnsnz.com



Patterns



A-line Tunic — see page 66 for pattern instructions



Short Sleeve Lace Top — see page 68 for pattern instructions



Patterns



Crew Neck Sweater — see page 70 for pattern instructions



Vee Vest — see page 72 for pattern instructions



Instructions

Boho Cardie

Design by Patons



YARN

- 8, 9, 10, 11 balls 50g Patons Regal Cotton 4 Ply in Grey 2727

NEEDLES AND TOOLS

- 3.50mm crochet hook
- Tapestry needle for sewing seams

MEASUREMENTS

Size: S, M, L, XL

To Fit Bust: 80, 90, 100, 110cm

Actual Size (approx, from edge to edge): 100, 110, 121, 132cm

Length (approx): 65, 66, 67, 68cm

TENSION

22tr and 17 rows to 10cm over Mesh Patt, using 3.50mm hook.

SPECIAL ABBREVIATIONS

dec = * yoh and draw up a lp in next st, yoh and draw through first 2 lps on hook, rep from * in next st, yoh and draw through all 3 lps on hook.

shell = (2tr, 2ch, 2tr) in next 2ch sp.

WORKING PATTERN

BACK YOKE (BEG AT NECK)

Using 3.50mm hook, make 2ch.

Foundation Row: WS - Miss 1ch, insert hook in next ch, draw lp through, yoh and draw through 1 lp (ch made), yoh and draw through 2 lps (dc made), * insert hook in ch made, draw lp through, yoh and draw through 1 lp (ch made), yoh and draw through 2 lps (dc made), rep from * until there are 49 (51, 53, 55) dc.

Row 1: 3ch (counts as 1tr throughout), 1tr in each of first 5 (6, 7, 8) dc, 1htr in each of next 9dc, 2dc in next dc, 1dc in each of next 19dc, 2dc in next dc, 1htr in each of next 9dc, 1tr in each of next 4 (5, 6, 7) dc, 2tr in last dc. 53 (55, 57, 59) sts.

Row 2: 5 (5, 6, 6) ch, miss 1ch, 1dc in each of next 4 (4, 5, 5) ch, 1dc in each st to turning ch, insert hook in top of turning ch, draw lp through, yoh and draw through 1 lp (ch made), yoh and draw through 2 lps (dc made), * insert hook in ch made, draw lp



through, yoh and draw through 1 lp (ch made), yoh and draw through 2 lps (dc made), rep from * 3 (3, 4, 4) times. 61 (63, 67, 69) dc.

Row 3: 3ch, 1tr in first dc, 1ch, miss 1dc, (1tr in next dc, 1ch, miss 1dc) 5 (6, 7, 7) times, (1htr in next dc, 1ch, miss 1dc) 5 times, (1dc in next dc, 1ch, miss 1dc) 9 (8, 8, 9) times, (1htr in next dc, 1ch, miss 1dc) 5 times, (1tr in next dc, 1ch, miss 1dc) 5 (6, 7, 7) times, 2tr in last dc. 63 (65, 69, 71) sts.

Row 4: 5 (5, 6, 6) ch, miss 1ch, 1dc in each of next 4 (4, 5, 5) ch, 1dc in each of next 2tr, (1dc in 1ch sp, 1dc in next st) to turning ch, insert hook in top of turning ch, draw lp through, yoh and draw through 1 lp (ch made), yoh and draw through 2 lps (dc made), * insert hook in ch made, draw lp through, yoh and draw through 1 lp (ch made), yoh and draw through 2 lps (dc made), rep from * 3 (3, 4, 4) times. 71 (73, 79, 81) dc.

Row 5: 3ch, 1tr in each of first 20 (21, 24, 25) dc, 1htr in each of next 9dc, 2dc in next dc, 1dc in each of next 11dc, 2dc in next dc, 1htr in each of next 9dc, 1tr in each dc to last dc, 2tr in last dc. 75 (77, 83, 85) sts.

Row 6: As Row 2. 83 (85, 93, 95) dc.

Row 7: 3ch, 1tr in first dc, 1ch, miss 1dc, (1tr in next dc, 1ch, miss 1dc) 14 (14, 16, 16) times, (1htr in next dc, 1ch, miss 1dc) 4 times, (1dc in next dc, 1ch, miss 1dc) 4 (5, 5, 6) times, (1htr in next dc, 1ch, miss 1dc) 4 times, (1tr in next dc, 1ch, miss 1dc) to last dc, 2tr in last dc. 85 (87, 95, 97) sts.

Row 8: As Row 4. 93 (95, 105, 107) dc.

Row 9: 3ch, 1tr in each of first 35 (36, 41, 42) dc, 1htr in each of next 9dc, 2dc in next dc, 1dc in each of next 3dc, 2dc in next dc, 1htr in each of next 9dc, 1tr in each dc to last dc, 2tr in last dc. 97 (99, 109, 111) sts.

Row 10: As Row 2. 105 (107, 119, 121) dc.

Row 11: 3ch, 1tr in first dc, 1ch, miss 1dc, (1tr in next dc, 1ch, miss 1dc) to last dc, 2tr in last dc. 107 (109, 121, 123) sts.

Row 12: As Row 4. 115 (117, 131, 133) dc.

Row 13: 3ch, 1tr in each dc to last dc, 2tr in last dc. 117 (119, 133, 135) tr.

Rep last 4 rows 2 (2, 2, 3) times, then 10th and 11th rows once. 167 (169, 193, 219) sts.

Next Row: 3 (8, 6, 1) ch, miss 1ch, 1dc in each of next 2 (7, 5, 0) ch, 1dc in each st to last st, insert hook in last st, draw lp through, yoh and draw through 1 lp (ch made), yoh and draw through 2 lps (dc made), [insert hook in ch made, draw lp through, yoh and draw through 1 lp (ch made), yoh and draw through 2 lps (dc made)] 2 (7, 5, 0) times. 171 (183, 203, 219) dc.

Beg Armhole Shaping

Row 1: 2ch, miss first dc, 1tr in each dc to last 2dc, dec. 169 (181, 201, 217) sts.

Row 2: 2ch, miss dec, 1dc in each of next 167 (179, 199, 215) tr, turn, leaving turning ch unworked.

Row 3: 2ch, miss first dc, 1tr in next dc, (1ch, miss 1dc, 1tr in next dc) to last 3dc, 1ch, miss 1dc, dec, turn, leaving turning ch unworked. 165 (177, 197, 213) sts.

Row 4: 2ch, miss dec, (1dc in 1ch sp, 1dc in next tr) to last ch sp, 1dc in last ch sp, turn, leaving turning ch unworked. 163 (175, 195, 211) dc. Rep last 4 rows 4 (4, 5, 5) times, then 1st row once. 129 (141, 153, 169) sts.

Next Row: 1ch, 1dc in each st to end, completing armholes.

Tie a coloured thread at each end of last row.

Beg Mesh Patt

Row 1: 4ch, miss first 2dc, 1tr in next dc, (1ch, miss 1dc, 1tr in next dc) to end. 64 (70, 76, 84) stp.

Row 2: 1ch, 1dc in first tr, (1dc in next 1ch sp, 1dc in next tr) to turning ch lp, 1dc in lp, 1dc in 3rd of turning ch.

Row 3: 3ch, miss first dc, 1tr in each dc to end.

Row 4: 1ch, 1dc in each tr to end, working last dc in turning ch.

Rep last 4 rows until Back Yoke measures approx 34 (35, 36, 37) cm from highest point at shoulder, ending with a 1st patt row. Fasten off.

LEFT FRONT YOKE

Using 3.50mm hook, make 2ch.

Work Foundation row as for Back Yoke until there are 8 (9, 10, 7) dc.

Row 1: 3ch, miss first dc, 1tr in each dc to last dc, 2tr in last dc. 9 (10, 11, 8) tr.

Row 2: 5 (5, 6, 6) ch, miss 1ch, 1dc in each of next 4 (4, 5, 5) ch, 1dc in each st to end, working last dc in turning ch. 13 (14, 16, 13) dc.

Row 3: 4ch, miss first 2dc, (1tr in next dc, 1ch, miss 1dc) to last 1 (2, 2, 1) dc, 0 (1, 1, 0) tr in next dc, 2tr in last dc. 14 (15, 17, 14) sts.

Row 4: 5 (5, 6, 6) ch, miss 1ch, 1dc in each of next 4 (4, 5, 5) ch, 1dc in each of next 2 (3, 3, 2) tr, (1dc in 1ch sp, 1dc in next st) to turning ch lp, 1dc in lp, 1dc in 3rd of turning ch. 18 (19, 22, 19) dc.

Rep last 4 rows 4 (4, 4, 5) times, then rows 1 to 3 incl once. 64 (65, 77, 86) sts.

Next Row: 3 (8, 6, 1) ch, miss 1ch, 1dc in each of next 2 (7, 5, 0) ch, 1dc in each of next 2tr, (1dc in next 1ch sp, 1dc in next tr) to turning ch lp, 1dc in lp, 1dc in 3rd of turning ch. 66 (72, 82, 86) dc.

Beg Armhole Shaping

Row 1: 3ch, miss first dc, 1tr in each dc to last 2dc, dec. 65 (71, 81, 85) sts.

Row 2: 2ch, miss dec, 1dc in each st to end, working last dc in turning ch. 64 (70, 80, 84) dc.

Row 3: 4ch, miss first 2dc, 1tr in next dc, (1ch, miss 1dc, 1tr in next dc) to last 3dc, 1ch, miss 1dc, dec. 63 (69, 79, 83) sts.

Row 4: 2ch, miss dec, (1dc in 1ch sp, 1dc in next tr) to turning ch lp, 1dc in lp, 1dc in 3rd of turning ch. 62 (68, 78, 82) dc. ▶



◀ Boho Cardie continued.

Rep last 4 rows 4 (4, 5, 5) times, then 1st row once. 45 (51, 57, 61) sts.

Next Row: 1ch, 1dc in each tr to turning ch, 1dc in turning ch, completing armhole.

Tie a coloured thread at each end of last row.

Beg Mesh Patt

Row 1: 4ch, miss first 2dc, 1tr in next dc, (1ch, miss 1dc, 1tr in next dc) to end.

Row 2: 1ch, 1dc in first tr, (1dc in next 1ch sp, 1dc in next tr) to turning ch lp, 1dc in lp, 1dc in 3rd of turning ch.

Row 3: 3ch, miss first dc, 1tr in each dc to end.

Row 4: 1ch, 1dc in each tr to end, working last dc in top of turning ch. Rep last 4 rows until Left Front Yoke measures same as Back Yoke, ending with same patt row. Fasten off.

RIGHT FRONT YOKE

Using 3.50mm hook, make 2ch. Work Foundation row as for Back Yoke until there are 8 (9, 10, 7) dc.

Row 1: 3ch, 1tr in each dc to end. 9 (10, 11, 8) tr.

Row 2: 1ch, 1dc in each tr to turning ch, insert hook in top of turning ch, draw lp through, yoh and draw through 1 lp (ch made), yoh and draw through 2 lps (dc made), * insert hook in ch made, draw lp through, yoh and draw through 1 lp (ch made), yoh and draw through 2 lps (dc made), rep from * 3 (3, 4, 4) times. 13 (14, 16, 13) dc.

Row 3: 3ch, 1tr in each of first 1 (2, 2, 1) dc, (1ch, miss 1dc, 1tr in next dc) to end. 14 (15, 17, 14) sts.

Row 4: 1ch, 1dc in first tr, (1dc in 1ch sp, 1dc in next tr) to last 1 (2, 2, 1) sts, 1dc in next 0 (1, 1, 0) sts, insert hook in top of turning

ch, draw lp through, yoh and draw through 1 lp (ch made), yoh and draw through 2 lps (dc made), * insert hook in ch made, draw lp through, yoh and draw through 1 lp (ch made), yoh and draw through 2 lps (dc made), rep from * 3 (3, 4, 4) times. 18 (19, 22, 19) dc. Rep last 4 rows 4 (4, 4, 5) times, then rows 1 to 3 incl once. 64 (65, 77, 86) sts.

Next Row: 1ch, 1dc in first tr, (1dc in 1ch sp, 1dc in next tr) to turning ch, insert hook in top of turning ch, draw lp through, yoh and draw through 1 lp (ch made), yoh and draw through 2 lps (dc made), [insert hook in ch made, draw lp through, yoh and draw through 1 lp (ch made), yoh and draw through 2 lps (dc made)] 2 (7, 5, 0) times. 66 (72, 82, 86) dc.

Beg Armhole Shaping

Row 1: 2ch, miss first dc, 1tr in each dc to end. 65 (71, 81, 85) sts.

Row 2: 1ch, 1dc in each tr to last tr, turn, leaving rem sts unworked. 64 (70, 80, 84) sts.

Row 3: 2ch, miss first dc, 1tr in next dc, (1ch, miss 1dc, 1tr in next dc) to end. 63 (69, 79, 83) sts.

Row 4: 1ch, 1dc in first tr, (1dc in 1ch sp, 1dc in next tr) to last ch sp, 1dc in last ch sp, turn, leaving rem sts unworked. 62 (68, 78, 82) sts.

Rep last 4 rows 4 (4, 5, 5) times, then 1st row once. 45 (51, 57, 61) sts.

Next Row: 1ch, 1dc in each tr to turning ch, 1dc in turning ch, completing armhole.

Beg Mesh Patt

Work in Mesh Patt as for Left Front Yoke until Right Front Yoke measures same as Back Yoke, ending with same patt row. Fasten off.

SKIRT (WORKED IN ONE PIECE)

Using half mattress st, join shoulder seams. Join side edges of Mesh Patt below coloured threads.

Tie a coloured thread at each end of last row.

With WS facing and using 3.50mm hook, join with a sl st in first tr on

Right Front Yoke. Working across all Yoke sts (counting join as 1tr), proceed as follows –

Set Up Row: 6ch, 1tr in same sp as sl st, 3ch, miss two ch sps, sl st in next ch sp, 3ch, miss two ch sps, (2tr, 2ch, 2tr) in next tr, 1ch, miss two ch sps, (2tr, 2ch, 2tr) in next tr, * 3ch, miss two ch sps, sl st in next ch sp, 3ch, miss two ch sps, (1tr, 5ch, 1tr) in next tr, 3ch, miss two ch sps, sl st in next ch sp, 3ch, miss two ch sps, (2tr, 2ch, 2tr) in next tr, 1ch, miss two ch sps, (2tr, 2ch, 2tr) in next tr, rep from * to last five ch sps, 3ch, miss two ch sps, sl st in next ch sp, 3ch, miss two ch sps, (1tr, 3ch, 1tr) in 3rd of turning ch.

Beg Pineapple Patt

Row 1: 4ch, 5dtr in first 3ch sp, 1dtr in next tr, * 3ch, shell, 2ch, shell, 3ch, miss 2tr, 1dtr in next tr, 13dtr in next 5ch sp, 1dtr in next tr, rep from * 7 (8, 9, 10) times, 3ch, shell, 2ch, shell, 3ch, miss 2tr, 1dtr in next tr, 5dtr in turning ch sp, 1dtr in 3rd turning ch.

Row 2: 5ch, (miss 1dtr, sl st in next dtr, 3ch) 3 times, * shell, 1ch, miss 2ch, shell, 3ch, (miss 1dtr, sl st in next dtr, 3ch) 7 times, rep from * 7 (8, 9, 10) times, shell, 1ch, miss 2ch, shell, 3ch, (miss 1dtr, sl st in next dtr, 3ch) twice, miss 1dtr, sl st in next dtr, 2ch, 1tr in 4th turning ch.

Row 3: 1ch, 1dc in first tr, 3ch, (sl st in next 3ch lp, 3ch) twice, * shell, 2ch, shell, 3ch, miss 3ch, (sl st in next 3ch lp, 3ch) 6 times, rep from * 7 (8, 9, 10) times, shell, 2ch, shell, 3ch, miss 3ch, (sl st in next 3ch lp, 3ch) twice, 1dc in 3rd turning ch.

Row 4: 5ch, (sl st in next 3ch lp, 3ch) twice, * shell, 1ch, (1tr, 2ch, 1tr) in next 2ch sp, 1ch, shell, 3ch, miss 3ch, (sl st in next 3ch lp, 3ch) 5 times, rep from * 7 (8, 9, 10) times, shell, 1ch, (1tr, 2ch, 1tr) in next 2ch sp, 1ch, shell, 3ch, miss 3ch, sl st in next 3ch lp, 3ch, sl st in next 3ch lp, 2ch, 1tr in last dc.

Row 5: 1ch, 1dc in first tr, 3ch, sl st in next 3ch lp, 3ch, * shell, 2ch, (1tr, 2ch, 1tr) in next 2ch sp, 2ch, shell,

3ch, miss 3ch, (sl st in next 3ch lp, 3ch) 4 times, rep from * 7 (8, 9, 10) times, shell, 2ch, (1tr, 2ch, 1tr) in next 2ch sp, 2ch, shell, 3ch, miss 3ch, sl st in turning ch lp, 3ch, 1dc in 3rd turning ch.

Row 6: 6ch, sl st in next 3ch lp, 3ch, * shell, 3ch, miss 2ch, (1tr, 2ch, 1tr) in next 2ch sp, 3ch, miss 2ch, shell, 3ch, miss 3ch, (sl st in next 3ch lp, 3ch) 3 times, rep from * 7 (8, 9, 10) times, shell, 3ch, miss 2ch, (1tr, 2ch, 1tr) in next 2ch sp, 3ch, miss 2ch, shell, 3ch, miss 3ch, sl st in next 3ch lp, 3ch, 1tr in last dc.

Row 7: 1ch, 1dc in first tr, 3ch, sl st in first 3ch lp, 3ch, * shell, 3ch, (1tr, 2ch, 1tr) in next 2ch sp, 3ch, shell, 3ch, miss 3ch, (sl st in next 3ch lp, 3ch) twice, rep from * 7 (8, 9, 10) times, shell, 3ch, (1tr, 2ch, 1tr) in next 2ch sp, 3ch, shell, 3ch, miss 3ch, sl st in turning ch lp, 3ch, 1dc in 3rd turning ch.

Row 8: 1ch, 1dc in first dc, 3ch, * shell, 3ch, (1tr, 2ch, 1tr) in next 2ch sp, 3ch, shell, 3ch, miss 3ch, sl st in next 3ch lp, 3ch, rep from * 7 (8, 9, 10) times, shell, 3ch, (1tr, 2ch, 1tr) in next 2ch sp, 3ch, shell, 3ch, 1dc in last dc.

Row 9: 4ch, shell, * 3ch, (1tr, 5ch, 1tr) in next 2ch sp, (3ch, shell) twice, rep from * 7 (8, 9, 10) times, 3ch, (1tr, 5ch, 1tr) in next 2ch sp, 3ch, shell, 1ch, 1tr in last dc.

Row 10: 1ch, 1dc in first tr, 1ch, * shell, 3ch, 1dtr in next tr, 13dtr in next 5ch sp, 1dtr in next tr, 3ch, shell, 2ch, rep from * 8 (9, 10, 11) times, working 1ch instead of 2ch in final rep, 1dc in 3rd turning ch.

Row 11: 4ch, * shell, 3ch, (miss 1dtr, sl st in next dtr, 3ch) 7 times, shell, 1ch, miss 2ch, rep from * 8 (9, 10, 11) times, missing 1ch instead of 2ch in final rep, 1tr in last dc.

Row 12: 4ch, * shell, 3ch, miss 3ch, (sl st in next 3ch lp, 3ch) 6 times, shell, 2ch, rep from * 8 (9, 10, 11) times, working 1ch instead of 2ch in final rep, 1tr in 3rd turning ch.

Row 13: 4ch, 1tr in first tr, * 1ch, shell, 3ch, miss 3ch, (sl st in next 3ch lp, 3ch)

5 times, shell, 1ch, (1tr, 2ch, 1tr) in next 2ch sp, rep from * 8 (9, 10, 11) times, replacing final (1tr, 2ch, 1tr), with (1tr, 1ch, 1tr) in 3rd turning ch.

Row 14: 4ch, 1tr in first tr, * 2ch, shell, 3ch, miss 3ch, (sl st in next 3ch lp, 3ch) 4 times, shell, 2ch, (1tr, 2ch, 1tr) in next 2ch sp, rep from * 8 (9, 10, 11) times, replacing final (1tr, 2ch, 1tr), with (1tr, 1ch, 1tr) in 3rd turning ch.

Row 15: 4ch, 1tr in first tr, * 3ch, miss 2ch, shell, 3ch, miss 3ch, (sl st in next 3ch lp, 3ch) 3 times, shell, 3ch, miss 2ch, (1tr, 2ch, 1tr) in next 2ch sp, rep from * 8 (9, 10, 11) times, replacing final (1tr, 2ch, 1tr), with (1tr, 1ch, 1tr) in 3rd turning ch.

Row 16: 4ch, 1tr in first tr, * 3ch, shell, 3ch, miss 3ch, (sl st in next 3ch lp, 3ch) twice, shell, 3ch, (1tr, 2ch, 1tr) in next 2ch sp, rep from * 8 (9, 10, 11) times, replacing final (1tr, 2ch, 1tr), with (1tr, 1ch, 1tr) in 3rd turning ch.

Row 17: 4ch, 1tr in first tr, * 3ch, shell, 3ch, miss 3ch, sl st in next 3ch lp, 3ch, shell, 3ch, (1tr, 2ch, 1tr) in next 2ch sp, rep from * 8 (9, 10, 11) times, replacing final (1tr, 2ch, 1tr), with (1tr, 1ch, 1tr) in 3rd turning ch.

Row 18: 6ch, 1tr in first tr, * (3ch, shell) twice, 3ch, (1tr, 5ch, 1tr) in next 2ch sp, rep from * 8 (9, 10, 11) times, replacing final (1tr, 5ch, 1tr), with (1tr, 3ch, 1tr) in 3rd turning ch. Rows 1 to 18 incl form Pineapple Patt. Work a further 20 rows. Fasten off.

FRONT AND NECK EDGING

With RS facing and using 3.50mm hook, work 3 rows of dc evenly along right front edge, around neck and along left front edge, inc and dec as necessary to keep work flat. Fasten off.

SLEEVE EDGING

With RS facing and using 3.50mm hook, work 3 rounds of dc evenly around armhole edges, beg at top of side seam. Fasten off.

Patons

Ph: 1800 337 032

www.patonsyarns.com.au

Crocheted Silk Shawl

Design by Kaalund Yarns



YARN

- 1 ball 30gm Kaalund Yarns Enchantè 100% silk Peach C1
- 1 ball 30gm Kaalund Yarns Enchantè 100% silk Glasshouse C2
- 2 balls 30gm Kaalund Yarns Enchantè 100% silk Taupe C3
- 1 ball 30gm Kaalund Yarns Enchantè 100% silk Spring Flowers C4

NEEDLES AND TOOLS

- 4.00mm crochet hook – wood or bamboo
- Wool sewing needle

MEASUREMENTS

Size 30cm wide x 210cm long

TENSION

Not critical

SPECIAL ABBREVIATIONS

cl: cluster

trcl: treble cluster

Cluster = 2 tr leaving last loop of each tr on hook, yarn over, pull through all loops (3 loops)

STITCH GUIDE

PATTERN INSTRUCTIONS

With a 4.00mm hook and C1 work 504 ch.

Row 1: 1 tr into 5th ch from hook, 1 ch, miss 1 ch, *1 tr into next ch, 1 ch*, repeat from * to * to end of row, 3ch, turn. (251 fillet squares).

Row 2: 2 trcl into 1 ch sp *1 tr into next tr, 1 ch, 1 tr into next tr, 2 trcl into 1 ch sp*, repeat from * to * to end of row. Do not cut C1.

Add 1 strand of C2 (so hold 1 strand of C1 and C2 together at the same time).

Row 3: 3 ch, 2 trcl into top of cl of previous row, *1 tr into next tr, 1 ch, 1 tr into next tr, 2 trcl into top of cl of previous row*, repeat from * to * to end of row, 1 tr in turning ch of previous row, cut C1, turn.

The pattern stitch is now a repeat of row 3. Please note that each row has an individual direction as to which colour to cut or whether to cut or not.

Rows 4 and 5: 1 strand of C2. At end of row do not cut C2.

Row 6: 1 strand of C2 and C3. At end of row cut both colours.

Rows 7, 8 and 9: 1 strand of C4. At end of row cut colour.

Rows 10, 11 and 12: 1 strand of C1. At end of row cut colour.

Row 13: 1 strand of C3. At end of row cut colour.

Row 14: 1 strand of C4. At end of row do not cut C4.

Row 15: 1 strand of C4 and C3. At end of row cut colour C4.

Rows 16 to 34: 1 strand of C3. At end of row cut colour.

Rows 35 and 36: 1 strand of C1. At end of row cut colour.

EDGE

Row 1: Using colour C4 work 3 ch *5 tr into top of 2 trcl, 1 ch* repeat from

* to * to end, working 1 tr into turning ch of previous row.

Row 2: 4 ch *1 dc into 3rd tr of previous row, 1 ch, 5 tr into 1 ch space, 1 ch*, repeat from * to * to end of row, 1 tr into turning ch of previous row.

Row 3: 4 ch, *1 tr into dc of previous row, 2 ch, (1 dc, 2 ch, 1 dc) into 3rd tr of previous row, 2 ch* repeat from * to * to end of row, work 1 tr into turning ch of previous row, turn.

Row 4: 4 ch, *(1 tr, 1 ch into next 2 ch space) x 4 times (5 sets of tr = shell), miss 2 ch space*, repeat from * to * to end of row, work 1 tr into turning ch of previous row, turn.

Row 5: Change colour to C2. 3 ch, *(1 tr, 2 ch, 1 tr into next 1 ch space) x 3 (4 sets of tr = fan)*, repeat from * to * to end of row, work 1 tr into turning ch of previous row, turn.

Row 6: 3 ch, *1 dc, 1 tr, 1 dc into next 2 ch space*, repeat from * to * to end of row. End off and sew in ends securely using a wool sewing needle.



Kaalund Yarns
Shop 5, 216 Shaw Road
Wavell Heights Qld 4012
Ph: 07 3861 9403
www.kaalundyarns.com.au

MISSED A COPY?

Please send me: KB10 KB11 KB12 KB13
\$9.95 each (Plus \$2.95 P & H for 1-2 copies, 3 or more \$4.95)

Name:

Address:

Suburb:

State: P/code:

Payment options:

1. I enclose a cheque/money order made payable to:

Woodlands Publishing Pty Ltd for \$.....

2. Please debit my Visa Mastercard

Card No ____/____/____/____ Expiry: ____/____

Card holder's name:

Signature:

Post to: Knitting Baby and Beyond Magazine
PO Box 8035, Glenmore Park NSW 2745



Throw

Designed by Cheryl Gardner for Banksia Yarns



YARN

- Heirloom 10ply Tempo

NEEDLES

- 6.00mm crochet hook

MEASUREMENTS

Size: 100cm x 60cm

TENSION

As per wool

STITCH GUIDE

Make 75 ch.

Foundation Row. 1 tr into 4th ch from hook, 1 tr into each ch to end, turn.
73dc.

Next Row: 2ch (2ch counts as 1hfr), 1hfr into next tr, 1ch, miss 1 tr, * (1dc into next tr, 1ch, miss 1 tr) twice, 1hfr into next tr, 1ch, miss 1tr, 1tr into next tr, 1ch, miss 1tr, (1dtr into next tr, 1ch, miss 1tr) twice, 1tr into next tr, 1ch, miss 1tr, 1hfr into next tr, 1ch, miss 1tr, * rep from * to * 3 times more, (1dc into next tr, 1ch, miss 1tr) twice, 1hfr into next tr, 1 hfr into last tr, turn.

Row 1: 3ch, 1tr into each st and 1ch sp to end, turn.

Row 2: 2ch (2ch counts as 1tr), * 1tr into next tr, 1 ch, miss 1tr, (1dtr into next tr, 1ch, miss 1tr) twice, 1tr into next tr. 1ch, miss 1tr, 1 hfr into next tr, 1ch, miss 1tr, (1 dc into next tr, 1 ch, miss 1tr) twice. 1 hfr into next tr, 1 ch, miss 1tr, * rep from * to * 3 times more, 1tr into next tr, 1 ch, miss 1tr, (1dtr into next tr, 1ch, miss 1 tr) twice, 1tr into next tr, 1tr into last tr, turn.

Row 3: 2ch, * 1tr into next tr, 1 ch, miss next ch sp, (1dtr into next dtr, 1ch, miss next ch sp) twice, 1tr into next tr, 1 ch, miss next ch sp, 1 hfr into next hfr, 1 ch, miss next ch sp, (1dc into next dc, 1ch, miss next ch sp) twice, 1 hfr into next hfr, 1ch,



miss next ch sp, * rep from * to * 3 times more, 1tr into next tr, 1ch, miss next ch sp, (1dtr into next dtr, 1ch, miss next ch sp) twice, 1tr into next tr, 1tr into last tr, turn.

Row 4: As 1st row.

Row 5: 2ch, 1hfr into next tr, 1ch, miss 1tr, *(1dc into next tr, 1ch, miss 1tr) twice, 1hfr into next tr, 1ch, miss 1tr, 1tr into next tr, 1ch, miss 1tr, (1dtr into next tr, 1ch, miss 1tr) twice, 1tr into next tr, 1ch, miss 1tr, 1 hfr into next tr, 1ch, miss 1tr, * rep from * to * 3 times more, (1dc into next tr, 1ch, miss 1tr) twice, 1 hfr into next tr, 1hfr into last tr, turn.

Row 6: 2ch, 1hfr into next hfr, 1ch, miss next ch sp, * (1dc into next dc, 1ch, miss next ch sp) twice, 1hfr into next hfr, 1ch, miss next ch sp, 1tr into next tr, 1ch, miss next ch sp, (1dtr into next dtr, 1ch, miss next ch sp) twice, 1tr into next tr, 1ch, miss next ch sp, 1hfr into next hfr, 1ch, miss next ch sp, * rep from * to * 3 times more, (1dc into next dc, 1ch, miss next ch sp) twice, 1hfr into next hfr, 1hfr into last hfr, turn.

Row 1 to Row 6 sets pattern. Continue pattern until desired length ending with 4th row of pattern.

EDGING

Along each of the two long sides: Attach Yarn to any corner 3ch, 1tr into each stich to end. Fasten off. Repeat this on the other long side.

Picot Row: *5ch, 1sl st into 4th ch from hook, 3ch, 1dc into 4th tr* Continue around all 4 sides. Fasten off and sew in ends.

Banksia Yarns
Shop 7 Magnolia Mall,
285 Windsor St
Richmond NSW
Ph: 0401 279 853
www.banksiayarns.com.au

Fitted Scoop Cardigan

A neatly fitted cardigan with scoop neckline and shaped sleeve. The bodice features a deep rib at the waist. Design by Jo Sharp.

YARN

- 5, 5, 6, 7 balls 50g Jo Sharp Mulberry Silk Georgette in Watermelon 770

NEEDLES AND TOOLS

- 2.75mm needles
- 3.25mm needles
- 2.75mm circular needle
- 3 stitch holders

MEASUREMENTS

To fit bust: 80, 90, 100, 110cm
Bodice circumference at bust: 85, 95, 104, 114cm
Bodice length: 54, 55, 56, 57cm
Sleeve length (seam): 5, 5, 5, 5cm

TENSION

25 sts and 33 rows measured over 10cm (approx 4 in) of St st using 3.25mm needles. ▶





◀ **Fitted Scoop Cardigan continued.**

WORKING PATTERN

BACK

Using 2.75mm needles, cast on 147(165,183,201) sts.

Row 1: RS - K1, *P1, K1; rep from * to end.

Row 2: WS - P1, *K1, P1; rep from * to end.

These 2 rows form K1, P1 rib pattern. Work in rib patt until length measures 20cm, ending on a WS row.

RS dec - K2, *K2tog, K1; rep from * to last st, K1 [99(111,123,135) sts]. Change to 3.25mm needles. Now working in St st for rem, work 9 rows straight.

Shape Sides

RS inc - K2, M1, K to last 2 sts, M1, K2.

This row sets patt for inc.

Inc 2 sts as set on foll 6th rows, 4 times [109(121,133,145)sts, 25 shaping rows].

Cont working straight until length (from beg) measures 34cm, ending on a WS row.

Shape Armholes

RS - Cast off 6(7,8,9) sts at beg next 2 rows.

RS dec - K2, sl1, K1, pssso, work to last 4 sts, K2tog, K2.

This row sets patt for dec.
Dec 2 sts as set on foll alt rows, 7(8,9,10) times [81(89,97,105) sts, 17(19,21,23) armhole shaping rows]**.

Work straight until length from beg armhole shaping measures 19(20,21,22)cm, ending on a WS row.

Shape Right Back Neck

RS - Work 19(21,23,25)sts, turn, place rem 62(68,74,80)sts on a holder. Work each side of neck separately.

WS - Dec 1 st at neck edge of this row, and foll 3 rows [15(17,19,21) sts].

WS - Work 1 row.

Shape Right Shoulder

RS - Cast off 5(6,6,7) sts at beg this row and foll alt row.

WS - Work 1 row.

RS - Cast off rem 5(5,7,7) sts.

Shape Left Back Neck

RS - With RS facing, leave 43(47,51,55) centre sts on a holder, rejoin yarn to rem sts and work to end.

WS - Dec 1 st at neck edge of this row, and foll 3 rows [15(17,19,21) sts].

WS - Work 2 rows.

Shape Left Shoulder

WS - Cast off 5(6,6,7)sts at beg this row and foll alt row.

RS - Cast off rem 5(5,7,7)sts.

LEFT FRONT

Using 2.75mm needles, cast on 73(81,91,99)sts.

Row 1: RS - K1, *P1, K1; rep from * to end.

Row 2: WS - P1, *K1, P1; rep from * to end.

These 2 rows form K1, P1 rib pattern. Work in rib patt until length measures 20cm, ending on a WS row.

RS dec - K0(2,0,2) *K2tog, K1; rep from * to last st, K1 [49(55,61,67) sts].

Change to 3.25mm needles.

Now working in St st for rem, work 9 rows straight. **

Shape Sides

RS inc - K2, M1, K to end.

This row sets patt for inc.

Inc 1 st as set on foll 6th rows, 4 times [54(60,66,72), 25 shaping rows].

Cont working straight until length (from beg) measures 34cm, ending on a WS row.

Shape Armholes

RS - Cast off 6(7,8,9)sts at beg of row.

WS - Work 1 row.

RS dec - K2, sl1, K1, pss0, K to end.

This row sets patt for dec.

Dec 1 st as set on foll alt rows, 7(8,9,10) times [40(44,48,52)sts, 17(19,21,23)armhole shaping rows].

WS - Work 1 row.

Shape Neck

RS - Work 33(36,41,44) sts, turn, place rem 7(8,7,8)sts on a holder.

WS - Cast off 4(4,5,5) sts at beg of this and foll alt row.

RS dec - K to last 4 sts, K2tog, K2.

This row sets patt for dec.

Dec 1 st as set on foll alt rows 5(6,7,8) times, then foll 4th rows 4 times [15(17,19,21) sts, 31(33,35,37) neck shaping rows]. Work straight until length from beg armhole shaping measures same as back to shoulder shaping, ending on a WS row.

RS - Cast off 5(6,6,7) sts at beg this row and foll alt row.

WS - Work 1 row.

RS - Cast off rem 5(5,7,7) sts.

RIGHT FRONT

Work as for Left Front to **.

Shape Sides

RS inc - K to last 2 sts, M1, K2.

This row sets patt for inc.

Inc 1 st as set on foll 6th rows, 4 times [54(60,66,72), 25 shaping rows].

Cont working straight until length (from beg) measures 34cm, ending on a WS row.

RS - Work 1 row.

Shape Armholes

WS - Cast off 6(7,8,9)sts at beg of row, work to end.

RS dec - K to last 4 sts, K2tog, K2.

This row sets patt for dec.

Dec 1 st as set on foll alt rows, 7(8,9,10) times [40(44,48,52) sts, 16(18,20,22) armhole shaping rows].

WS - Work 1 row.

Shape Neck

RS - Place first 7(8,7,8)sts on a holder, work to end.

WS - Work 1 row.

RS - Cast off 4(4,5,5)sts on this and foll alt row.

WS - Work 1 row.

RS - K2, sl1, K1 pss0, K to end.

This row sets patt for dec.

Dec 1 st as set on foll alt rows 5(6,7,8) times, then foll 4th rows 4 times [15(17,19,21)sts, 33(35,37,39) neck shaping rows].

Work straight until length from beg armhole shaping measures same as back to shoulder shaping, ending on a RS row.

WS - Cast off 5(6,6,7) sts at beg this row and foll alt row.

RS - Cast off rem 5(5,7,7) sts.

SLEEVES

Using 2.75mm needles, cast on 67(71,77,81) sts.

Row 1: RS - K1, *P1, K1; rep from * to end.

Row 2: WS - P1, *K1, P1; rep from * to end.

These 2 rows form K1, P1 rib pattern. Rep these 2 rows twice, inc 1(1,1,1) st on last row worked [68(72,78,82) sts, 6 rows].

Change to 3.25mm needles.

Shape Sleeve

RS inc - Working in St st throughout, inc 1 st at each end of this row, then foll alt rows, twice [74(78,84,88)sts, 5 shaping rows].

Work 7 rows straight.

**Shape Sleeve Cap

RS - Cast off 6(7,8,9) sts at beg next 2 rows.

RS dec - Dec 1 st at each end of this row, then foll 4th rows, 5(6,6,7) times, then foll alt rows, 8(7,8,7) times, then every row 9 times [16(18,20,22)sts, 48(50,52,54) shaping rows].

RS - Cast off 5 sts at beg next 2 rows.

Cast off rem 6(8,10,12)sts.

MAKING UP

Press all pieces gently, on WS using a warm iron over a damp cloth. With RS tog, using backstitch, join shoulder seams. With RS tog, centre sleeves to shoulder seam and using backstitch, join to bodice. Using edge to edge st, join side and sleeve seams.

NECKBAND

With RS facing, using a 2.75mm circ needle, pick up 7(8,7,8)sts from holder at right centre front neck, 53(55,57,59)sts up right side front neck, 8sts down right side back neck, 43(47,51,55)sts from holder across back neck and 8sts up left side back neck, 53(55,57,59)sts down left side front neck, and 7(8,7,8)sts from holder at left centre front neck [179(189,195,205)sts].

Row 1: RS - K1, *P1, K1; rep from * to end.

Row 2: WS - P1, *K1, P1; rep from * to end.

This rows forms K1, P1 rib patt.

Rep these 2 rows, twice [6 rows].

Cast off in rib.

FRONT BANDS

With RS facing, using 2.75mm needles, pick up 137(141,145,149) sts up right front (including neckband).

Row 1: WS - P1, *K1, P1; rep from * to end.

Row 2: RS - K1, *P1, K1; rep from * to end.

These 2 rows form K1, P1 rib.

Make 8(9,9,9) buttonholes
WS Working in K1, P1 rib, patt 6(8,4,8) sts, *cast off 2 sts, patt 16(14,15,15) sts, rep from * to last 5 sts, cast off 2 sts, patt 3 sts. RS Working in rib, cast on sts cast off in last row.

WS - Patt 2 more rows in rib. Cast off in rib. Rep on left front band, omitting buttonholes. Sew on buttons to correspond with button holes.

Jo Sharp

www.josharppatterns.com

Vintage Crochet Blanket

A cuddly blanket made from brightly coloured crochet “granny” squares using Jo Sharp’s mulberry silk georgette yarn in jewel shades. Soft enough for a baby and a great project for a beginner. Design by Jo Sharp.

YARN

- 4 x 50g balls Jo Sharp Mulberry Silk Georgette in Infinite 768
- 2 x 50g balls Jo Sharp Mulberry Silk Georgette in Acid 765
- 2 x 50g balls Jo Sharp Mulberry Silk Georgette in Devon 764
- 3 x 50g balls Jo Sharp Mulberry Silk Georgette in Evening 772
- 3 x 50g balls Jo Sharp Mulberry Silk Georgette in Fig 771
- 2 x 50g balls Jo Sharp Mulberry Silk Georgette in Pea 773
- 3 x 50g balls Jo Sharp Mulberry Silk Georgette in Watermelon 770
- 3 x 50g balls Jo Sharp Mulberry Silk Georgette in Woodland 776

NEEDLES AND TOOLS

- 4.00mm crochet hook.

MEASUREMENTS

Size: 115cm x 115cm

TENSION

Each square should measure approximately 10cm in width and length.

WORKING PATTERN

PATTERN FOR CROCHET SQUARE

Using first colour with a 4.00mm crochet hook, make 6ch, sl st in first of these ch to form a ring.

Round 1: Using 1st colour; 3 ch, 2 tr

in ring, (3ch, 3tr in ring) 3 times, 3ch, sl st in 3rd ch at beg. Fasten off.

Round 2: Using 2nd colour; Draw a loop through any 3 ch sp, 3ch, (2tr, 3ch, 3tr) in same 3ch sp, *1ch, (3tr, 3ch, 3tr) in next 3ch sp, rep from * to end. 1 ch, sl st in 3rd ch at beg. Fasten off.

Round 3: Using 3rd colour; Draw a loop through any corner 3ch sp, 3ch, (2tr, 3ch, 3tr) in same 3ch sp, *1ch, 3tr in next 1ch sp, 1ch, (3tr, 3ch, 3tr) in next 3ch sp, rep from * twice, 1ch, 3tr in next 1ch sp, 1ch, sl st in 3rd ch at beg. Fasten off.

Round 4: Using 4th colour; Draw a loop through any corner 3ch sp, 3ch, (2tr, 3ch, 3tr) in same 3ch sp, *1ch (3tr in next 1ch sp, 1ch) twice, (3tr, 3ch, 3tr) in next 3ch sp, rep from * twice, 1ch, (3tr in next 1ch sp, 1ch) twice, sl st in 3rd ch at beg. Fasten off.

Round 5: Using 4th colour; Draw a loop through any corner 3ch sp, 3ch, (2tr, 3ch, 3tr) in same 3ch sp, *1ch (3tr in next 1ch sp, 1ch) three times, (3tr, 3ch, 3tr) in next 3ch sp, rep from * twice, 1ch, (3tr in next 1ch sp, 1ch) twice, sl st in 3rd ch at beg. Fasten off.

MAKING UP

Using Col 1, follow the diagram opposite and with RS facing, join squares with oversew stitch.

TIPS

1. When working with a new colour, crochet over loose end to keep it secure.
2. Sewing in ends as you complete each square will avoid a huge task later on when all squares are completed.
3. Darn in ends carefully as the blanket is reversible.

1	2	3	4	5	6	7	8	9	10	1	2
10	1	2	3	4	5	6	7	8	9	10	1
9	10	1	2	3	4	5	6	7	8	9	10
8	9	10	1	2	3	4	5	6	7	8	9
7	8	9	10	1	2	3	4	5	6	7	8
6	7	8	9	10	1	2	3	4	5	6	7
5	6	7	8	9	10	1	2	3	4	5	6
4	5	6	7	8	9	10	1	2	3	4	5
3	4	5	6	7	8	9	10	1	2	3	4
2	3	4	5	6	7	8	9	10	1	2	3
1	2	3	4	5	6	7	8	9	10	1	2
10	1	2	3	4	5	6	7	8	9	10	1

COLOUR SEQUENCES FOR CROCHET SQUARES

Make 101 pieces in all.

MAKE 16 X SQUARE 1

Begin with Devon

Round 1: Devon

Round 2: Acid

Round 3: Evening

Round 4: Fig

Round 5: Watermelon

MAKE 15 X SQUARE 2

Begin with Infinite

Round 1: Infinite

Round 2: Fig

Round 3: Acid

Round 4: Devon

Round 5: Infinite

MAKE 14 X SQUARE 3

Begin with Fig

Round 1: Fig

Round 2: Pea

Round 3: Woodland

Round 4: Watermelon

Round 5: Evening

MAKE 14 X SQUARE 4

Begin with Infinite

Round 1: Infinite

Round 2: Evening

Round 3: Acid

Round 4: Woodland

Round 5: Infinite

MAKE 14 X SQUARE 5

Begin with Evening

Round 1: Evening

Round 2- Fig

Round 3: Woodland

Round 4: Pea

Round 5: Devon

MAKE 14 X SQUARE 6

Begin with Infinite

Round 1: Infinite

Round 2: Devon

Round 3: Pea

Round 4: Watermelon

Round 5: Infinite

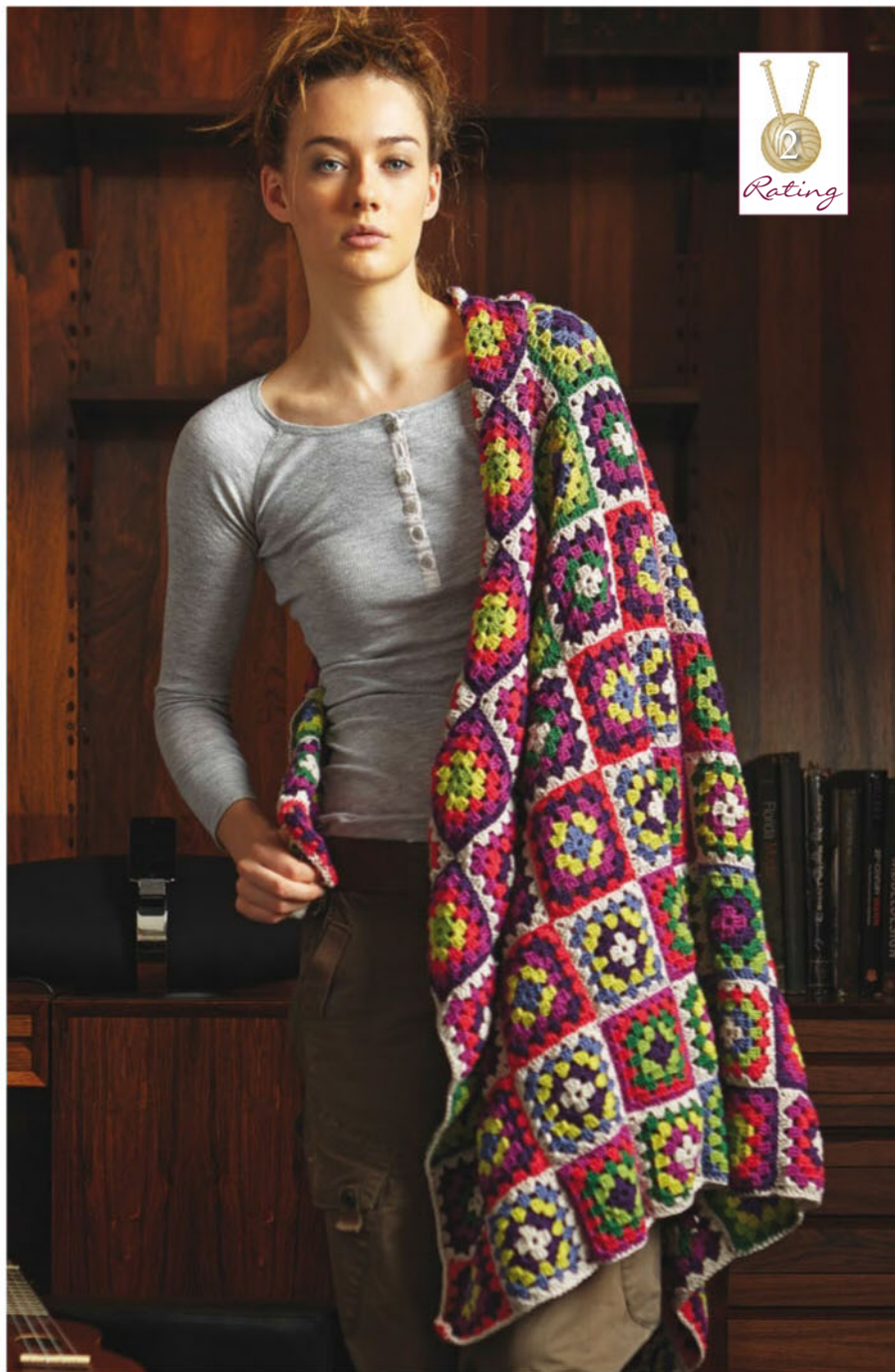
MAKE 14 X SQUARE 7

Begin with Pea.

Round 1: Pea

Round 2: Acid

Round 3: Watermelon



Round 4: Evening

Round 5: Fig

MAKE 14 X SQUARE 8

Begin with Infinite

Round 1: Infinite

Round 2: Fig

Round 3: Watermelon

Round 4: Evening

Round 5: Infinite

MAKE 14 X SQUARE 9

Begin with Fig

Round 1: Fig

Round 2: Devon

Round 3: Acid

Round 4: Pea

Round 5: Woodland

MAKE 15 X SQUARE 10

Begin with Infinite

Round 1: Infinite

Round 2: Woodland

Round 3: Evening

Round 4: Fig

Round 5: Infinite

Jo Sharp

www.josharppatterns.com

Wrap around Skirt

Design by Knit Picks



YARN

- 8 (9, 11, 14, 18) balls 50gm Knit Picks Lindy Chain Linen and Cotton in Urchin 26456

NEEDLES

- 2.50mm circular needle 80cm or longer
- 2.75mm circular needle 80cm or longer

MEASUREMENT

Waist: 68.5, 86, 106, 120.5, 132cm
Garment length: 73.5, 73.5, 80, 89, 92.5cm

TENSION

28 sts by 32 rows in Stocking stitch on 2.50mm needles to 10cm after blocking

STITCH GUIDE

Design notes: This skirt is meant to be worn at, or just below, your natural waistline. If you prefer wearing skirts on your hips you may wish to size up and also note that the skirt hem will then fall lower on your leg.

Add length to the skirt by working more rows between decrease rows in the shaping section. Shorten the skirt by working less rows between decreases.

The Lace Pattern has both charted and written instructions. If using the chart, read the charts RS rows (odd numbers) from right to left, and WS rows (even numbers) from left to right.

6-St Reinforced Buttonhole

Bring working yarn to front and slip 1 stitch purlwise. Move yarn to back. *Slip 1. Pass the first slipped stitch over it; repeat from * 5 times more (do not move yarn). Slip the last bound-off stitch to left needle and turn work.

Use a Cable Cast On and cast on 7 stitches as follows: *Insert the right needle between the first and second stitches on the left needle, draw through a loop, place this loop on the left needle; rep from * 6 times more (you cast on 1 st more than you bound off), turn work. With yarn held back, slip the first stitch from the left needle and pass the extra cast on stitch over it to close the buttonhole. Work to the end of the row as specified.

LACE BORDER

Skirt is worked from the bottom up and will decrease to waist measurement.

With 2.75mm needles, loosely cast on 439 (535, 599, 663, 695) sts.

Change to 2.50mm needles.

Work rows 0-46 of either the written Edge Lace Pattern or the Edge Lace Chart as follows:

CHART INSTRUCTIONS

Work to first repeat line, work section in repeat lines 26 (32, 36, 40, 42) times, work to end of chart row.

Edge Lace Pattern Written Instructions (worked flat over multiples of 16 sts plus 23)

Row 0: WS and WS rows 2-16 and 38-46: (p1, k1) 3 times, purl to last 6 sts, (k1, p1) 3 times.

Row 1: RS - (k1, p1) 3 times, k1, yo, ssk, *yo, ssk, k1, k2tog, yo, k1, (yo, ssk) twice k1, k2tog, yo, k1, yo, ssk; rep from * another 25 (31, 35, 39, 41) times, yo, ssk, k1, k2tog, yo, k2tog, yo, k1, (p1, k1) 3 times.

Row 3: (k1, p1) 3 times, k2, yo, *ssk, yo, cdd, yo, k2tog, yo, k1, yo, ssk, yo, cdd, yo, k2tog, yo, k1, yo; rep from * another 25 (31, 35, 39, 41) times, ssk, yo, cdd, yo, k2tog, yo, k2, (p1, k1) 3 times.

Row 5: (k1, p1) 3 times, k3, *yo, ssk, k1, k2tog, yo, k3, yo, ssk, k1, k2tog, yo, k3; rep from * another 25 (31, 35, 39, 41) times, yo, ssk, k1, k2tog, yo, k3, (p1, k1) 3 times.

Row 7: (k1, p1) 3 times, k3, *k1, yo, cdd, yo, k5, yo, cdd, yo, k4; rep from * another 25 (31, 35, 39, 41) times, k1, yo, cdd, yo, k4, (p1, k1) 3 times.

Row 9: (k1, p1) 3 times, k1, yo, ssk, *(k2, yo, ssk) 4 times; rep from * another 25 (31, 35, 39, 41) times, k2, yo, ssk, k1, k2tog, yo, k1, (p1, k1) 3 times.

Row 11: (k1, p1) 3 times, k2, yo, *ssk, k2, yo, cdd, yo, k1, yo, ssk, k2, yo, cdd, yo, k1, yo; rep from * another 25 (31, 35, 39, 41) times, ssk, k2, yo, cdd, yo, k2, (p1, k1) 3 times.

Row 13: (k1, p1) 3 times, k3, *(yo, ssk, k2) 4 times; rep from * another 25 (31, 35, 39, 41) times, yo, ssk, k2, yo, ssk, k2, (p1, k1) 3 times.

Row 15: (k1, p1) 3 times, k1, k2tog, yo, *k1, yo, ssk, k2, yo, cdd, yo, k1, yo, ssk, k2, yo, cdd, yo; rep from * another 25 (31, 35, 39, 41) times, k1, yo, ssk, k2, yo, ssk, k1, (p1, k1) 3 times.

Row 17: (k1, p1) 3 times, k3, *(k2, yo, ssk) 4 times; rep from * another 25 (31, 35, 39, 41) times, k2, yo, ssk, k4, (p1, k1) 3 times. row 18: (p1, k1) 3 times, p5, k1, p2, *p5, k1, p7, k1, p2; rep from * another 25 (31, 35, 39, 41) times, p3, (k1, p1) 3 times.

Row 19: (k1, p1) 3 times, k3, *(k2tog, yo, p1, yo, ssk, k3) 2 times; rep from * another 25 (31, 35, 39, 41) times, k2tog, yo, p1, yo, ssk, k3, (p1, k1) 3 times.

Rows 20 and 26: (p1, k1) 3 times, p4, k3, p1, *p4, k3, p5, k3, p1; rep from * 25 (31, 35, 39, 41) times, p3, (k1, p1) 3 times.

Row 21: (k1, p1) 3 times, k2, k2tog, *yo, p3, yo, ssk, k1, k2tog, yo, p3, yo, ssk, k1, k2tog; rep from * another

25 (31, 35, 39, 41) times, yo, p3, yo, ssk, k2, (p1, k1) 3 times.

Rows 22 and 24: (p1, k1) 3 times, p3, k5, *(p3, k5) 2 times; rep from * 25 (31, 35, 39, 41) times, p3, (k1, p1) 3 times.

Row 23: (k1, p1) 3 times, k1, k2tog, yo, *(p5, yo, cdd, yo) twice; rep from * another 25 (31, 35, 39, 41) times, p5, yo, ssk, k1, (p1, k1) 3 times.

Row 25: (k1, p1) 3 times, k2, yo, *(ssk, p3, k2tog, yo, k1, yo) twice; rep from * another 25 (31, 35, 39, 41) times, ssk, p3, k2tog, yo, k2, (p1, k1) 3 times.

Row 27: (k1, p1) 3 times, k1, p1, yo, *(k1, ssk, p1, k2tog, k1, yo, p1, yo) twice; rep from * another 25 (31, 35, 39, 41) times, k1, ssk, p1, k2tog, k1, yo, p1, k1, (p1, k1) 3 times.

Row 28: (p1, k1) 3 times, p6, *p1, k1, p7, k1, p6; rep from * 25 (31, 35, 39, 41) times, p1, k1, p1, (k1, p1) 3 times.

Row 29: (k1, p1) 3 times, k1, p2, *(yo, k1, cdd, k1, yo, p3) twice; rep from * another 25 (31, 35, 39, 41) times, yo, k1, cdd, k1, yo, p2, k1, (p1, k1) 3 times.

Rows 30 and 32: (k1, p1) 3 times, p1, k3, p3, k1, *k4, p3, k5, p3, k1; rep from * 25 (31, 35, 39, 41) times, k2, p1, (k1, p1) 3 times.

Row 31: (k1, p1) 3 times, k1, p2, *p1, yo, cdd, yo, p5, yo, cdd, yo, p4; rep from * another 25 (31, 35, 39, 41) times, p1, yo, cdd, yo, p3, k1, (p1, k1) 3 times.

Row 33: (k1, p1) 3 times, k1, p2, *(k2tog, yo, k1, yo, ssk, p3) twice; rep from * another 25 (31, 35, 39, 41) times, k2tog, yo, k1, yo, ssk, p2, k1, (p1, k1) 3 times.

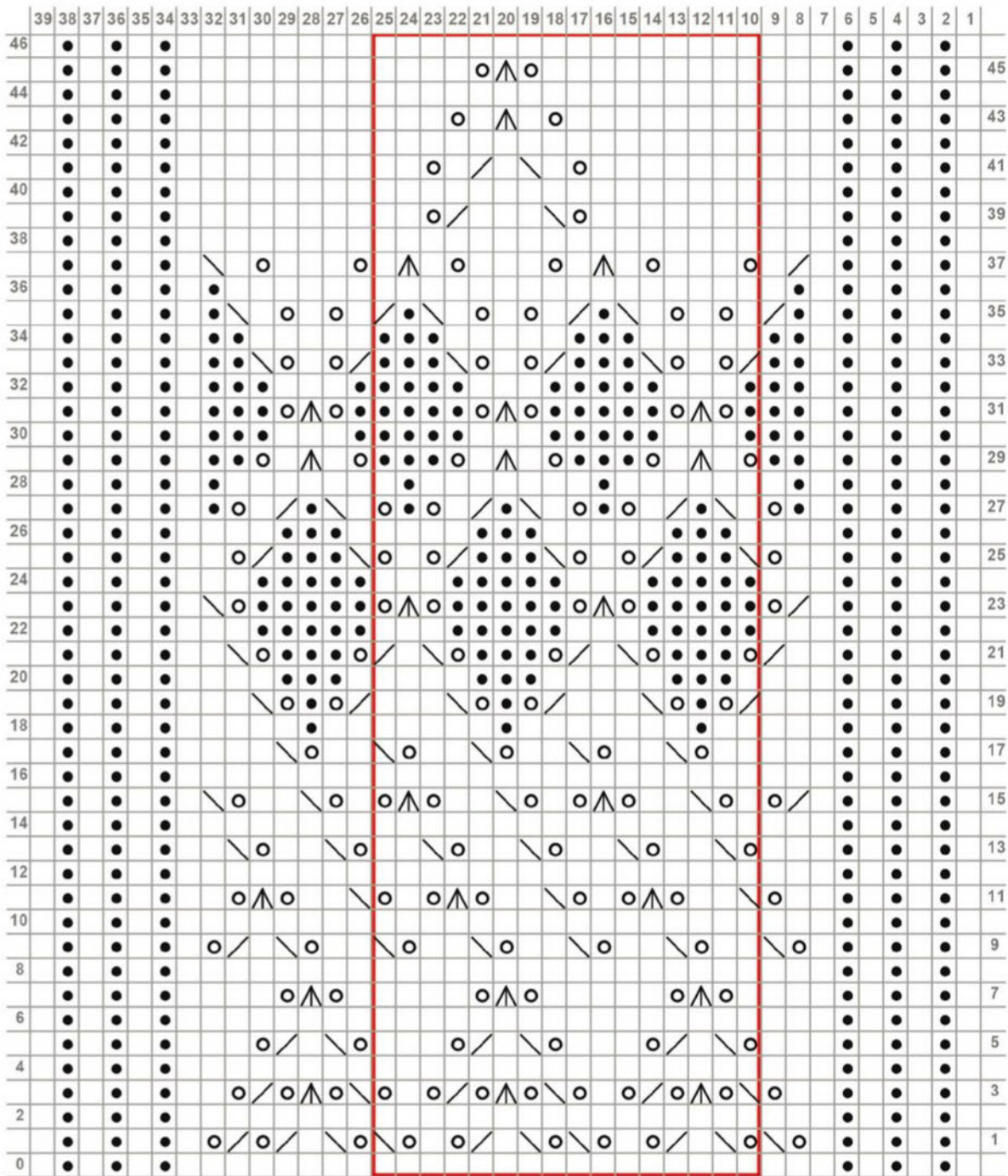
Row 34: (P1, K1) 3 times, P1, K2, P5, *(K3, P5) 2 times; rep from * 25 (31, 35, 39, 41) times, K2, P1, (K1, P1) 3 times.

Row 35: (K1, P1) 3 times, K1, P1, K2TOG, *(K1, YO, K1, YO, K1, SSK, P1, K2TOG) twice; rep from * another 25 (31, 35, 39, 41) times, K1, YO, K1, YO, K1, SSK, P1, K1, (P1, K1) 3 times.

Row 36: (p1, k1) 4 times, p to last 8 sts, (k1, p1) 4 times.



Edge Lace Chart



Legend

knit
 RS: knit stitch
 WS: purl stitch

purl
 RS: purl stitch
 WS: knit stitch

yo
 Yarn Over

ssk
 Slip one stitch as if to knit, Slip another stitch as if to knit. Insert left-hand needle into front of these 2 stitches and knit them together

k2tog
 Knit two stitches together as one stitch

Central Double Dec
 Slip first and second stitches together as if to knit. Knit 1 stitch. Pass two slipped stitches over the knit stitch.

Pattern repeat

Row 37: (k1, p1) 3 times, k1, k2tog, k1, *(yo, k3, yo, k1, cdd, k1) twice; rep from * another 25 (31, 35, 39, 41) times, yo, k3, yo, k1, ssk, k1, (p1, k1) 3 times.

Row 39: (k1, p1) 3 times, k3, *k7, yo, ssk, k3, k2tog, yo, k2; rep from * another 25 (31, 35, 39, 41) times, k8, (p1, k1) 3 times.

Row 41: (k1, p1) 3 times, k3, *k7, yo, k1, ssk, k1, k2tog, k1, yo, k2; rep from * another 25 (31, 35, 39, 41) times, k8, (p1, k1) 3 times.

Row 43: (k1, p1) 3 times, k3, *k8, yo, k1, cdd, k1, yo, k3; rep from * another 25 (31, 35, 39, 41) times, k8, (p1, k1) 3 times.

Row 45: (k1, p1) 3 times, k3, *k9, yo, cdd, yo, k4; rep from * another 25 (31, 35, 39, 41) times, k8, (p1, k1) 3 times.

Begin Shaping

Row 1: RS - (k1, p1) 3 times, pm, k to last 6 sts, decreasing 4 (4, 2, 0, 2) sts evenly across this section, ending with pm, (p1, k1) 3 times. 435 (531, 597, 663, 693) sts.

Row 2: WS - (p1, k1) 3 times, sm, p141 (173, 195, 217, 227), pm, p141 (173, 195, 217, 227), pm, p141 (173, 195, 217, 227), sm, (k1, p1) 3 times.

Work a Dec Row now and repeat every 1.90 (1.68, 1.68, 1.68, 1.68) cm 29 (33, 37, 42, 44) more times until 259 (331, 371, 405, 425) sts remain, using the appropriate RS or WS Dec Row instructions.

Dec Row: RS - (k1, p1) 3 times, sm, *k1, ssk, knit to 3 sts before next marker, k2tog, k1, sm; rep from * twice more, (p1, k1) 3 times. 6 sts decreased.

Dec Row: WS - (p1, k1) 3 times, sm, *p1, ssp, purl to 3 sts before next marker, p2tog, p1, sm; rep from * twice more, (k1, p1) 3 times. 6 sts decreased.

Next RS Row: (k1, p1) 3 times, sm, k to last 6 sts removing markers as you come to them, sm, (p1, k1) 3 times.

Next Row: WS - (p1, k1) 3 times, sm, p to last 6 sts removing markers as you come to them, sm, (k1, p1) 3 times.

Work these two rows for 1.3cm.

WAIST BAND

Row 1: RS - (k1, p1) 3 times, remove marker, knit to end of row, cast on 202 (255, 315, 352, 390) sts. 461 (586, 686, 757, 815) sts.

Row 2: WS - purl to end of row, cast on 202 (255, 315, 352, 390) sts. 663 (841, 1001, 1109, 1205) sts. Work even for 1.30cm end with a RS row facing.

Buttonhole Row: RS - K288 (360, 434, 482, 532), work a 6-St Reinforced Buttonhole, knit to end of row.

Work even for 1.30cm end with a RS row facing.

Next RS Row: Purl

Work even for 1.30cm end with a RS row facing.

Buttonhole Row: RS - K288 (360, 434, 482, 532), work a 6-St

Reinforced Buttonhole, knit to end of row.

Cast off all sts.

FINISHING

Weave in ends, wash and block to diagram.

Fold waistband and ties toward WS of fabric at the purl ridge and stitch into place.

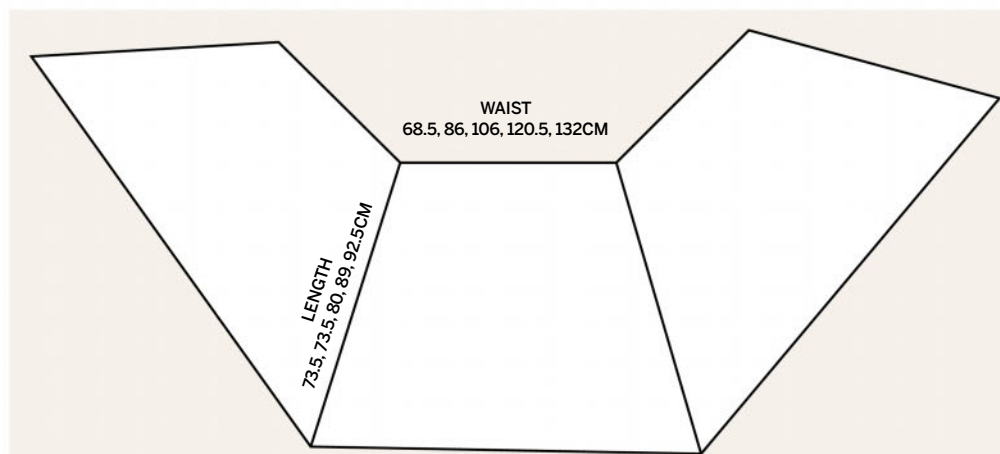
The buttonholes should be aligned.

Thread a tapestry needle with yarn and secure the buttonholes by working a whipstitch around the opening. You will lace the skirt ties through the buttonhole when wrapping the skirt, so you want the buttonholes to remain aligned.

Knit Picks

www.KnitPicks.com

Ph: 1800 106 750



Silk Lace Drawstring Bag

Every girl deserves a little bit of luxury. Designed by Alison Craven

YARN

- 2 balls 8ply Debbie Bliss Pure Silk
- 1.5m matching cord for drawstrings optional

NEEDLES

- 4.00mm knitting needles
- 3.75mm knitting needles
- Wool sewing needle
- 4.00mm crochet hook optional

MEASUREMENTS

Approx 14cm diameter, 21cm high.

TENSION

Not critical to project

STITCH GUIDE

Row 1: K1 * yon to m1, k3, sl 1, k2tog, pssso, k3, yon, k1*

Row 2 and alternate rows: Purl.

Row 3: K2 *yon to m1, k2, sl 1, k2tog, pssso, k2, yon, k3* to last 2 st, K2.

Row 5: K3 * yon to m1, k1, sl 1, k2tog, pssso, k1, yon, k5* to last 3 sts, K3.

Row 7: K4 * yon to m1, sl 1, k2tog, pssso, yon, k7* to last 4 sts, K4.

WORKING PATTERN

Using 4.00mm needles cast on 121 stitches.

Work in pattern until work measures approx 20cm from beginning ending with a purl row.

Change to 3.75mm needles and knit 4 rows. Knit 2 together at end of last row. 120 sts.



Shape bottom of bag

Row 1: *K10, K2tog repeat from * to end.

Row 2 and every alternate row: Purl.

Row 3: *K9, K2tog rep from * to end.

Row 5: *K8, K2 tog rep from * to end. Continue decreasing in this manner until 20 stitches remain.

Break off yarn and thread through remaining stitches.

Draw up tightly and fasten off securely.

MAKING UP

Join seam.

Make 2 crochet cords and weave them both through the lace approx 3-4cm from top of bag to form drawstrings or use purchased cord in a matching colour.



Knitting Yarns by Mail
114 Fox and Fances Rd
Boolarra Sth, Vic
Ph: 0408 992 927
www.knittingyarns.com.au



Men's Jumper

Design by Cleckheaton

YARN

- 14, 15, 16, 17, 17, 18 balls 50g Cleckheaton Country Merino Marles 8 ply in Donkey 2957

NOTE – If sleeve length is altered, yarn quantity may need to be adjusted.

NEEDLES

- 4.00mm knitting needles
- 3.25mm knitting needles
- 3.25mm circular knitting needle
- 3 stitch-holders
- Wool sewing needle

MEASUREMENTS

Size: 16, 18, 20, 22, 24, 26
To fit chest: 95, 100, 105, 110, 115, 120cm
Finished fit: 104, 109, 114, 119, 124, 129cm
Garment length: 67, 68, 69, 70, 71, 72cm
Sleeve length: 50cm

TENSION

22 sts by 30 rows over stocking st, on 4.00mm needles to 10cm.

SPECIAL ABBREVIATION

M1 – make 1 – pick up loop that lies before next stitch, place on left-hand needle and knit or purl into back of loop.

STITCH GUIDE

DESIGN FEATURE – This Jumper has been designed with raglan armhole shaping on the Back, but the Front features saddle shoulder shaping.

BACK

Using 3.25mm needles, cast on 114 (122, 126, 130, 138, 142) sts.

Row 1: K2, * P2, K2, rep from * to end.

Row 2: P2, * K2, P2, rep from * to end.

Last 2 rows form rib.

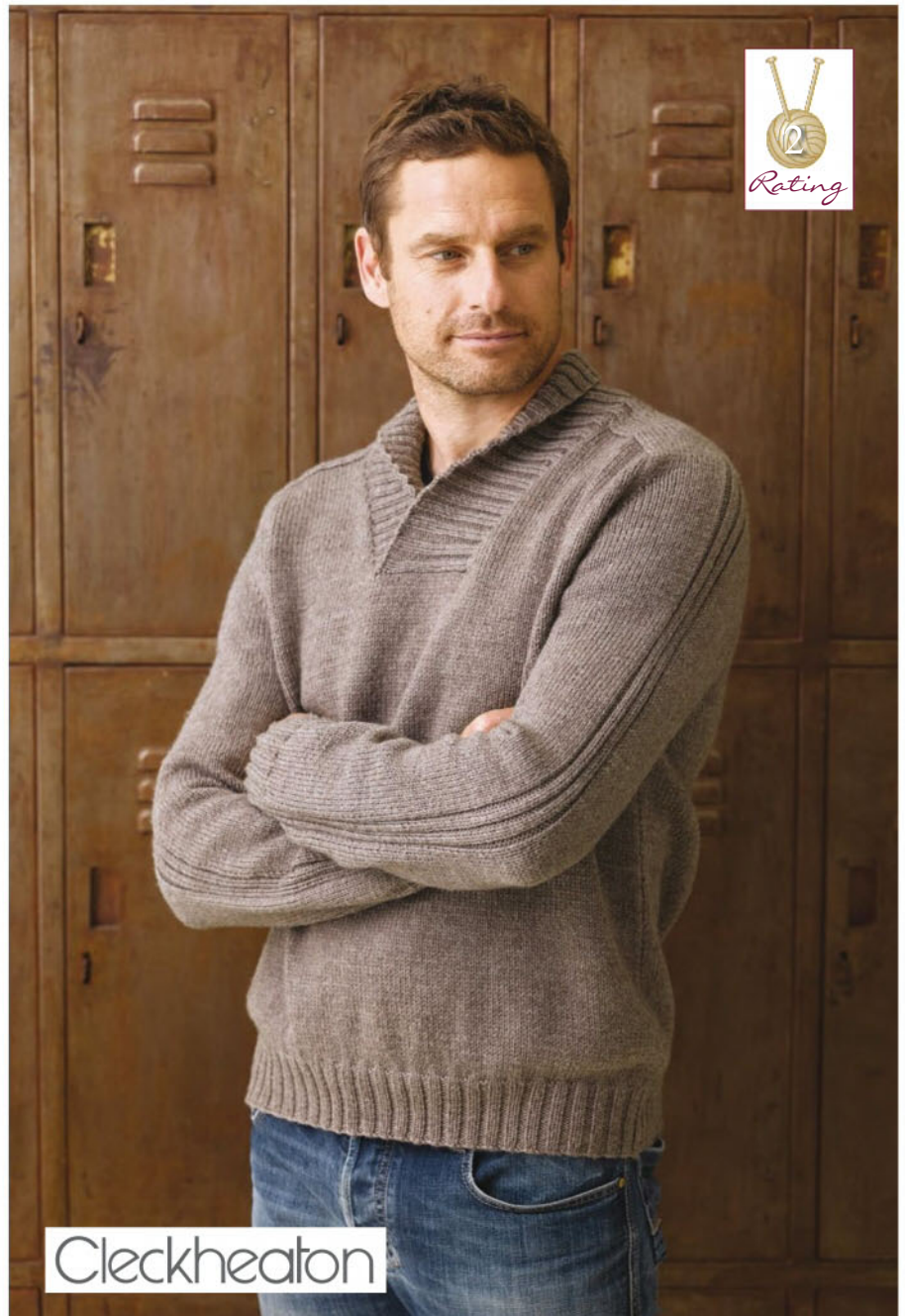
Work a further 20 rows rib, inc 2 (0, 2, 2, 0, 2) sts evenly in last row. 116 (122, 128, 132, 138, 144) sts. Change to 4.00mm needles. Work in stocking st until Back measures 42cm from beg, ending with a purl row.

Shape Armholes

Cast off 3 sts at beg of next 2 rows. 110 (116, 122, 126, 132, 138) sts. **

Row 3: K3, K2tog, knit to last 5 sts, sl 1, K1, pss0, K3.

Row 4: P3, P2tog tbl, purl to last 5 sts, P2tog, P3. ▶





◀ **Men's Jumper continued.**

Row 5: As 3rd row. 104 (110, 116, 120, 126, 132) sts.

Row 6: Purl.

Rep last 4 rows 1 (2, 5, 5, 6, 8) times. 98 (98, 86, 90, 90, 84) sts. Dec one st (as before) at each end of next row, then in every foll alt row until 30 (32, 32, 34, 36, 36) sts rem. Work 1 row. Leave rem sts on a stitch-holder.

FRONT

Work as for Back to **.

Row 3: K3, K2tog, knit to last 5 sts, sl 1, K1, pssso, K3. 108 (114, 120, 124, 130, 136) sts.

Dec one st (as before) at each end of every foll alt row 0 (0, 0, 0, 1, 4) times, then in every foll 4th row until 100 (106, 112, 116, 120, 122) sts rem.

Work 1 row.

Divide for Neck

Next Row: K39 (42, 45, 47, 49, 50), cast off next 22 sts, knit to end.

Cont on last 39 (42, 45, 47, 49, 50) sts for right side of neck.

Work 1 row.

Next Row: K2tog, knit to last 5 sts, sl 1, K1, pssso, K3.

*** Dec one st at neck edge in every foll 4th row 8 (9, 9, 9, 9, 9) times, at same time dec one st (as before) at armhole edge in every foll 4th row 0 (2, 7, 6, 9, 9) times, then in every foll 6th row 5 (4, 1, 2, 0, 0) times. 24 (25, 26, 28, 29, 30) sts.

Work 4 (2, 2, 4, 4, 4) rows.

Shape Shoulder

Cast off 6 (6, 6, 7, 7, 7) sts at beg of next row, then in every foll alt row twice. 6 (7, 8, 7, 8, 9) sts.

Work 1 row. Cast off. ***

With WS facing, join yarn to rem 39 (42, 45, 47, 49, 50) sts for left side of neck and purl to end.

Next Row: K3, K2tog, knit to last 2 sts, sl 1, K1, pssso.

Rep from *** to ***, working 1 row less before shoulder shaping.

LEFT SLEEVE

Using 3.25mm needles, cast on 66 (70, 70, 74, 74, 74) sts.

Row 1: K0 (2, 2, 0, 0, 0), * P2, K2, rep from * to last 2 (0, 0, 2, 2, 2) sts, P2 (0, 0, 2, 2, 2).

Row 2: P0 (2, 2, 0, 0, 0), * K2, P2, rep from * to last 2 (0, 0, 2, 2, 2) sts, K2 (0, 0, 2, 2, 2).

Last 2 rows form rib for Sleeves.

Work a further 20 rows rib.

Change to 4.00mm needles.

Beg Rib Panel

Row 1: K28 (30, 30, 32, 32, 32), P2, (K2, P2) twice, knit to end.

Row 2: P28 (30, 30, 32, 32, 32), K2, (P2, K2) twice, purl to end.

Last 2 rows form patt for rem.

Work a further 2 rows.

Row 5: K2, M1, patt to last 2 sts, M1, K2. 68 (72, 72, 76, 76, 76) sts.

Keeping patt correct, inc one st (as before) at each end of every foll 10th (12th, 10th, 12th, 8th, 8th) row until there are 78 (84, 82, 88, 78, 86) sts,

then in every foll 12th (14th, 12th, 14th, 10th, 10th) row until there are 86 (88, 90, 92, 96, 98) sts.

Cont without further shaping until Sleeve measures 50cm (or length desired) from beg, working last row on WS.

Shape Top

Cast off 3 sts at beg of next 2 rows. 80 (82, 84, 86, 90, 92) sts.

Sizes 24 and 26 only

Row 3: K3, K2tog, patt to last 5 sts, sl 1, K1, pssso, K3.

Row 4: P3, P2tog tbl, patt to last 5 sts, P2tog, P3.

Row 5: As 3rd row. (84, 86) sts.

Work 1 row without shaping.

Rep last 4 rows (0, 1) times.

All sizes

80 (82, 84, 86, 84, 80) sts.

Next Row: K3, K2tog, patt to last 5 sts, sl 1, K1, pssso, K3.

Dec one st (as before) at each end of every foll 4th row 2 (2, 0, 0, 0, 0) times, then in every foll alt row until 40 (42, 42, 44, 44, 44) sts rem.

Work 1 row. ****

Beg Saddle

Dec one st (as before) at beg only in next row, then in every foll alt row until 24 (25, 24, 25, 25, 24) sts rem.

Work 1 row.

Leave sts on a stitch-holder.

RIGHT SLEEVE

Work as for Left Sleeve to ****.

Beg Saddle

Dec one st (as before) at end only in next row, then in every foll alt row until 24 (25, 24, 25, 25, 24) sts rem.

Work 1 row.

Leave sts on a stitch-holder.

SHAWL COLLAR

Join back raglan seams. Sew in front edge of sleeves, placing cast-off shoulder sts to straight saddle section of sleeves and noting that tops of sleeves form part of neckline.

With RS facing, using 3.25mm circular needle and beg at side of centre front cast-off sts, knit up 45 (45, 46, 46, 47, 48) sts evenly

along right side edge of neck to seam, knit across sts from right sleeve stitch-holder, knit across sts from back stitch-holder, knit across sts from left sleeve stitch-holder, then knit up 45 (45, 46, 46, 47, 48) sts evenly along left side edge of neck. 168 (172, 172, 176, 180, 180) sts.

NOTE – Do not join to work in rounds, but work backwards and forwards in rows.

Row 1: P3, * K2, P2, rep from * to last st, P1.

Row 2: K3, * P2, K2, rep from * to last st, K1.

Last 2 rows form rib for shawl collar.

NOTE – When pattern specifies turn, proceed as follows to avoid holes in your work. Take yarn under needle and onto other side of work, slip next st onto

right-hand needle, take yarn back to original position, slip st back onto left-hand needle, then turn and proceed as instructed in the pattern.

Row 3: Rib 108 (112, 112, 116, 120, 120), turn.

Row 4: Rib 48 (52, 52, 56, 60, 60), turn.

NOTE – When knitting a wrapped st, insert right-hand needle through wrap as well as through the st it wraps, then knit wrap and st tog. When purling a wrapped st, using right-hand needle, pick up back loop of the wrap, place on left-hand needle, then purl wrap and st tog.

Row 5: Rib 52 (56, 56, 60, 64, 64), turn.

Row 6: Rib 56 (60, 60, 64, 68, 68), turn.

Row 7: Rib 60 (64, 64, 68, 72, 72), turn.

Cont in this manner (working 4 sts extra each time) until the row “Rib 100 (104, 104, 108, 112, 112), turn” has been worked.

Next Row: Rib to end.

Next Row: Rib across all sts to end. 168 (172, 172, 176, 180, 180) sts. Work 25 rows.

Cast off very loosely in rib.

MAKING UP

Do not press. Join side and sleeve seams. Sew left side edge of shawl collar to stitches cast off at centre front. On WS, slip-stitch other side edge of shawl collar in position.

Cleckheaton Yarns
Ph: 1800 337 032
www.cleckheaton.com.au

MISSED A COPY?

Please send me: CK52 CK53 CK54
 CK55 CK56 CK57

\$9.95 each (Plus \$2.95 P & H for 1–2 copies, 3 or more \$4.95)

Name:

Address:

Suburb:

State: P/code:

Payment options:

1. I enclose a cheque/money order made payable to:

Woodlands Publishing Pty Ltd for \$.....

2. Please debit my Visa Mastercard

Card No _____ / _____ / _____ / _____ Expiry: ____ / ____

Card holder's name:

Signature:

DON'T MISS OUT



Post to: Creative Knitting Magazine
PO Box 8035, Glenmore Park NSW 2745

A-line Tunic

A simple summer tunic with A-line shaping and keyhole opening with button at back neck. Design by Jo Sharp.

YARN

7, 7, 8, 8 50g balls Jo Sharp Soho Summer DK Cotton in Java 226
1 x 1cm button

NEEDLES AND TOOLS

4.00mm needles
14.00mm circular needle, 60cm long
2 Stitch holders

MEASUREMENTS

Size: A, B, C, D
To fit bust: 80, 90, 100, 110 cm
Bodice circumference (at bust): , 78,
87, 98, 104 cm
Length: 67, 67, 67, 67 cm

TENSION

22.5 sts and 30 rows measured over
10cm (approx 4 in) of St st using
4.00mm needles.



WORKING PATTERN

FRONT

Using 4.00mm needles, cast on
114(124,136,144) sts.

RS - Knit 4 rows.

Working in St st throughout, work
8(6,2,2) rows straight.

Shape Bodice

RS - dec K1, sl 1, K1, pss0, K to last
3 sts, K2tog, K1.

This row sets patt for dec.

Dec 2 sts as set on foll 10th rows, 11
times.

Work 17 rows straight

[90(100,112,120) sts,

140(138,134,134) rows from beg].

Shape Armholes

RS - dec Cast off 3(3,3,7) sts at beg
of next 2 rows, then 2 sts at beg of
foll 2(4,6,6) rows.

Next row: RS - Dec 1 st at each end
of this

and foll alt rows, 1(2,4,4) times

[76(80,84,84) sts].

Work 3(1,3,3) rows straight

[150(150,154,154) rows from beg].

**

Next row: RS - Dec 1 st at each end
of this and foll 4th rows 6(6,5,5)
times [62(66,72,72) sts].

Work 1 row straight [176 rows from
beg].

Shape Left Armhole and Neck

Row 1: RS - Work 26(28,31,31)sts,
turn leave rem 36(38,41,41) sts on
holder.

Row 2: WS - Cast off 3 sts at beg
(neck edge).

Row 3: RS - Dec 1 st at beg
(armhole edge).

Row 4: WS - Cast off 3 sts at beg
(neck edge).

Row 5: RS - Knit.

Row 6: WS - Cast off 2 sts at beg
(neck edge).

Row 7: RS - Dec 1 st at beg (armhole
edge).

Row 8: WS - Cast off 2 sts at beg
(neck edge).

Row 9: RS - Knit.

Row 10: WS - Cast off 2 sts at beg
(neck edge).

Row 11: RS - Dec 1 st at beg
(armhole edge).

Row 12: WS - Purl.

Row 13: RS - Dec 1 st at end (neck
edge).

Row 14: WS - Purl.

Row 15: RS - Dec 1 st at beg
(armhole edge).

Row 16: WS - Purl.

Row 17: RS - Dec 1 st at end (neck
edge).

Row 18: WS - Purl.

Row 19: RS - Dec 1 st at beg
(armhole edge) [7(9,12,12) sts].
Work 5 rows straight (200 rows from
beg).

Shape Left Shoulder

RS - Cast off 4(5,5,5) sts at beg of
this row, knit to end.

Work 1 row.

Cast off rem 3(4,7,7) sts.

Complete second side to match first
side, rev all shaping as follows;

With RS facing leave 10 sts on holder
at centre front neck, and rejoin yarn to
rem

26(28,31,31) sts, knit to end.

Work 1 row.

Now cont as for left armhole and neck
shaping, from Row 2, noting that WS
rows will now be RS rows and RS
rows will now be WS rows.

BACK

Work as for Front to **.

***RS - Dec 1 st at each end of
this and foll 4th rows, 4 times
[66(70,74,74) sts].

Work 1 row [168(168,172,172) rows
from beg].



Make Keyhole Opening and Cont Left Armhole Shaping

RS - K31 (33,35,35) sts, K2tog, turn, place rem 33 (35,37,37) sts on holder.

Work each side of keyhole opening separately.

*Cont in St st, always slipping the first st of each WS row (keyhole edge) AT THE SAME TIME dec 1 st at armhole edge in 2nd row and every foll 4th row, 6 (6,5,5) times [25 (27,30,30) sts].

Work 5 rows straight [200 rows from beg].

Shape Left Shoulder

RS - Cast off 4 (5,5,5) sts at beg of this row, and 3 (4,7,7) sts at beg of foll alt row.

Cast off rem 18 sts.

With RS facing, rejoin yarn to rem 33 (35,37,37) sts at base of opening.

RS - Sl 1, K1, pssso, knit to end [33 (33,35,35) sts].

Complete second side to match first side, rev all shaping as follows; work as for A-line Tunic Back (Version 1) from * to end, noting that WS rows will now be RS rows and RS rows will now be WS rows.

MAKING UP

Press pieces gently using a warm iron over a damp cloth. Using backstitch, join shoulder seams. Using edge to edge st, join side seams. Press seams gently.

NECK EDGE

Using 4.00mm circ needles, with RS facing, pick up 15 sts across left back neck, 26 (28,32,32) sts down left front neck, 10 sts across centre front neck, 26 (28,32,32) sts up right front neck and 12 (12,15,15) sts across right back neck [92 (96,104,104) sts].

WS - Knit 3 rows (Garter st). Cast off. Break off yarn leaving 60cm tail.



BUTTON LOOP

Thread this tail through darning needle and make a few close sts at base of neckband to create a loop.

Onto this loop make as many tight blanket sts as comfortably fits, then reinforce at top, and break off yarn. On opposite opening side, attach button.

Using edge to edge st, join side seams.

ARMHOLE EDGE

Using 4.00mm circular needles, with RS facing, beg at side seam, pick up 100 (112,120,124) sts evenly around armhole.

Round 1: RS - Purl.

Round 2: Knit.

Round 3: Purl. Cast off loosely.

Jo Sharp

www.josharppatterns.com

Short Sleeve Lace Top

Design by Gitta Schrade for Filatura Di Crosa



YARN

- 6, 6, 7, 7, 8 balls 50gm Chantal in shade #14

NEEDLES

- 4.50mm straight needles
- 2 stitch holders

MEASUREMENTS

Size: 81-86, 86-91, 96-102,
102-107, 107-112cm

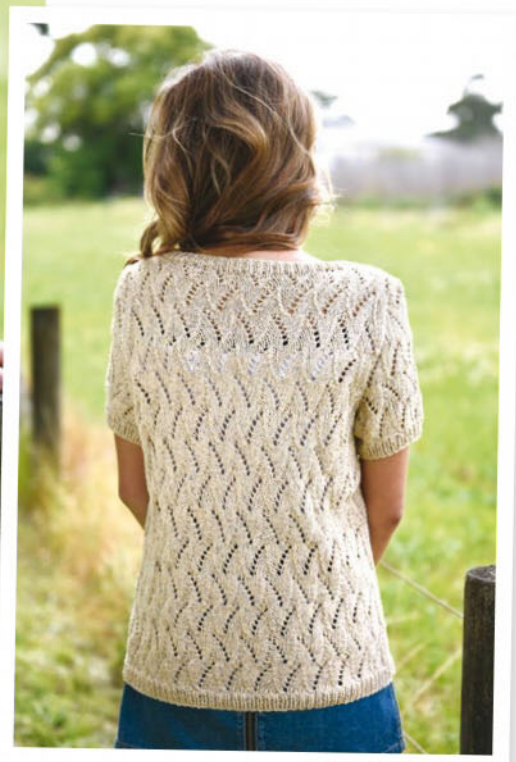
Finished fit: 88, 95, 102, 109, 116cm

Garment length: 56, 57, 58, 59, 60cm

Sleeve length: 7, 7, 8, 8, 9cm

TENSION

20 sts over Stst - 10cm on 4.5mm
needles.



SPECIAL ABBREVIATIONS

M1p – place strand between last st worked and next st onto left-hand needle and p into back of it;
skp - slip 1 stitch-knit 1 stitch-pass slipped st over;
yo – yarn over needle to make 1 stitch.

STITCH GUIDE

BACK

With 4.50mm needles, cast on 88 (95, 102, 109, 116) sts.
K1, p1 rib for 7 rows.
P 1 row on WS.

Beg Lace Pattern

Row 1: RS - K3, *skp, k5, yo; rep from * to last st; k1.

Row 2 & all other WS rows: Purl.

Row 3: K3, *skp, k4, yo, k1; rep from * to last st; k1.

Row 5: K3, *skp, k3, yo, k2; rep from * to last st; k1.

Row 7: K3, *skp, k2, yo, k3; rep from * to last st; k1.

Row 9: K3, *skp, k1, yo, k4; rep from * to last st; k1.

Row 11: K3, *skp, yo, k5; rep from * to last st; k1.

Row 13: K1, *yo, k5, k2tog; rep from * to last 3 sts, k3.

Row 15: K2, *yo, k4, k2tog, k1; rep from * to last 2 sts, k2.

Row 17: K3, *yo, k3, k2tog, k2; rep from * to last st, k1.

Row 19: K4, *yo, k2, k2tog, k3; rep from * to end.

Row 21: K5, *yo, k1, k2tog, k4; rep from * end last rep with k3.

Row 23: K6, *yo, k2tog, k5; rep from * end last rep with k3.

Row 24: Purl.

Rep these 24 rows throughout, patt until piece measures 36 (36, 37, 37, 38)cm from beg, end with a WS row.

Shape Armholes

Cast off 5 (5, 6, 6, 7) sts beg next 2 rows.

Dec 1 st each end next 4 rows, then every other row 4 (5, 5, 6, 7) times more. 62 (67, 72, 77, 80) sts.

Patt straight until piece measures 54 (55, 56, 57, 58) cm from beg, end with a WS row.

Shape Neck and Shoulders

Next Row: RS - Patt 20 (22, 24, 26, 27) sts, TURN, on these sts only, cast off 4 sts beg next WS row.

Next Row: RS - Cast off 6 (7, 8, 9, 10) sts, patt to end.

Next Row: Cast off 4 sts, p to end.

Next Row: Cast off rem 6 (7, 8, 9, 9) sts.

Return to rem sts, slip centre 22 (23, 24, 25, 26) sts to holder; rejoin yarn and work 2nd half to match first, reversing shaping.

FRONT

Work as for Back until Front measures 43 (44, 45, 46, 47) cm from beg, end with a WS row.

Shape Neck

Next Row: RS - Patt 20 (22, 24, 26, 27) sts, TURN, on these sts only, dec 1 st at neck edge next 6 rows, then every other row twice. 12 (14, 16, 18, 19) sts rem.

Patt straight until front measures same as back to shoulder, end with a WS row.

Next Row: RS - Cast off 6 (7, 8, 9, 10) sts, patt to end.

P 1 row.

Next Row: Cast off rem 6 (7, 8, 9, 9) sts.

Return to rem sts, slip centre 22 (23, 24, 25, 26) sts to holder; rejoin yarn and work 2nd half to match first, reversing shaping.

SLEEVES

With 4.50mm needles, cast on 56 (58, 60, 62, 64) sts.

K1, p1 rib for 7 rows.

Next Row: WS - P10 (5, 6, 4, 5), M1p; *p12 (6, 8, 5, 6), M1p; rep from * to last 10 (5, 6, 3, 5) sts, p10 (5, 6, 3, 5). 60 (67, 67, 74, 74) sts. Work in Lace patt as for Back until piece measures 7 (7, 8, 8, 9) cm from beg, end with a WS row.

Shape Top

Keeping patt correct, cast off 5 (5, 6, 6, 7) sts beg next 2 rows.

Dec 1 st each end next 6 rows, then



every other row 13 (14, 15, 16, 16) times more.

Dec 1 st each end next 2 (4, 2, 4, 2) rows.

Cast off rem 8 (9, 9, 10, 12) sts.

MAKING UP

Join left shoulder seam.

NECKBAND

With 4.50mm needles, pick up and k9 sts down back neck, k centre 22 (23, 24, 25, 26) sts from back neck holder, pick up and k9 sts up back neck, 39 sts down front neck edge, k centre 22 (23, 24, 25, 26) sts from front neck holder, pick up and k39 sts up front neck edge. 140 (142, 144, 146, 148) sts.

K1, p1 rib for 5 rows.

Cast off loosely in rib.

Join right shoulder and neckband seam.

Insert sleeve tops.

Join side and sleeve seams.

Wentworth Distributors NZ Ltd

Free phone AU: 1800 150 542

Free phone NZ: 0800 738 998

www.naturallyyarnsnz.com

Crew Neck Sweater

A fitted sweater with a crew neck and short sleeves.

YARN

- 6,7,8,8 balls 50g Jo Sharp Mulberry Silk Georgette in Ecru 777

NEEDLES

- 3.25mm needles
- 3.25mm circular needle
- 2 stitch holders

MEASUREMENTS

Size: A, B, C, D

To fit bust: 80, 90, 100, 110, cm

Bodice circumference (at bust): 85, 94, 105, 114, cm

Bodice length: 58, 59, 60, 61, cm

Sleeve length (seam): 5, 5, 5, 5, cm

TENSION

25 sts and 33 rows measured over 10cm (approx 4 in) of St st using 3.25mm needles.

WORKING PATTERN

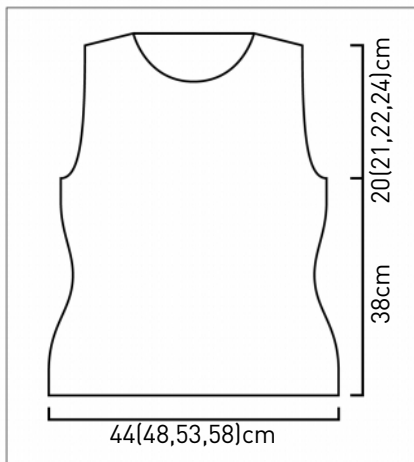
FRONT

Using 3.25mm needles, cast on 113(125,137,149) sts.

Row 1: RS - K2, *P1, K2; rep from * to end.

Row 2: WS - P2, *K1, P2; rep from * to end.

These 2 rows form K2, P1 rib pattern.



Rep these 2 rows twice [6 rows].

RS - Now working in St st throughout, work straight until length measures 10cm (from beg), ending on a WS row.

Shape Bodice

RS dec - K2, sl1, K1, pssso, K to last 4 sts, K2tog, K2.

This row sets patt for dec.

Dec 2 sts as set on foll 6th rows, 6 times [99(111,123,135) sts].

Work 15 rows straight.

RS inc - K2, M1, K to last 2 sts, M1, K2.

This row sets patt for inc.

Inc 2 sts as set on foll 6th rows, 4 times [109(121,133,145), 77 shaping rows].

Cont working straight until length (from beg) measures 38cm, ending on a WS row.

Shape Armholes

RS - Cast off 6(7,8,9) sts at beg next 2 rows.

RS dec - K2, sl1, K1, pssso, work to last 4 sts, K2tog, K2.

This row sets patt for dec.

Dec 2 sts as set on foll alt rows, 7(8,9,10) times [81(89,97,105) sts, 17(19,21,23) armhole shaping rows]**.

WS - Work 27 rows straight.

Shape Left Neck

RS - Work 33(37,41,45) sts, turn, place rem 48(52,56,60) sts on a holder.

Work each side of neck separately.

WS - Dec 1 st at neck edge of this row and foll 7 rows.

WS - Work 1 row.

RS - Dec 1 st at end (neck edge) of this row, then foll alt rows 4(5,6,7) times [20(23,26,29) sts, 19(21,23,25) neck shaping rows].

WS - Work 3 rows straight.

Shape Left Shoulder

RS - Cast off 7(8,9,10) sts at beg of his row, then foll alt row.

WS - Work 1 row.

RS - Cast off rem 6(7,8,9) sts.

Shape Right Neck

RS - Leave 15 centre sts on holder, rejoin yarn to rem 33(37,41,45) sts, work to end.

WS dec - Dec 1 st on neck edge of this row and foll 7 rows.

WS - Work 1 row.

RS - Dec 1 st at beg (neck edge) of this row, then foll alt rows, 4(5,6,7) times [20(23,26,29) sts, 19(21,23,25) neck shaping rows].

WS - Work 4 rows straight.

Shape Right Shoulder

WS - Cast off 7(8,9,10) sts at be of this row, then foll alt row.

RS - Cast off rem 6(7,8,9) sts.

BACK

Work as for Front to **.

WS - Work 43 rows straight.

Shape Right Neck

RS - Work 25(28,31,34) sts, turn, place rem 56(61,66,71) sts on a holder.

Work each side of neck separately.

WS - Dec 1 st at neck edge of this row and foll 4 rows [20(23,26,29) sts, 6 neck shaping rows].

Shape Right Shoulder

RS - Cast off 7(8,9,10) sts at beg of this row, then foll alt row.

WS - Work 1 row.

RS - Cast off rem 6(7,8,9) sts.

Shape Left Neck

RS - Leave 31(33,35,37) centre sts on holder, rejoin yarn to rem 25(28,31,34) sts, work to end.

WS dec - Dec 1 st neck edge of this row and foll 4 rows [20(23,26,29) sts, 6 neck shaping rows].

WS - Work 1 row.

Shape Left Shoulder

WS - Cast off 7(8,9,10) sts at beg of this row, then foll alt row.

RS - Cast off rem 6(7,8,9) sts.

SLEEVES

Using 3.25mm needles, cast on 68(71,77,80) sts.

Row 1: RS - K2, *P1, K2; rep from * to end.

Row 2: WS - P2, *K1, P2; rep from * to end.

These 2 rows form K2, P1 rib pattern. Rep these 2 rows twice, inc 0(1,1,2) sts on last row worked [68(72,78,82) sts, 6 rows].

Shape Sleeve

RS inc - Working in St st throughout, inc 1 st at each end of this row, then foll alt rows, twice [74(78,84,88) sts, 5 shaping rows].

Work 7 rows straight.

**Shape Sleeve Cap

RS - Cast off 6(7,8,9) sts at beg next 2 rows.

RS dec - Dec 1 st at each end of this row, then foll 4th rows, 5(6,6,7) times, then foll alt rows, 8(7,8,7) times, then every row 9 times [16(18,20,22) sts, 48(50,52,54) shaping rows].

RS - Cast off 5 sts at beg next 2 rows. Cast off rem 6(8,10,12) sts.

MAKING UP

Press all pieces gently, on WS using a warm iron over a damp cloth.

With RS tog, using backstitch, join shoulder seams. With RS tog, centre sleeves to shoulder seam and using backstitch, join to bodice. Using edge to edge st, join side and sleeve seams.

NECKBAND

With RS facing, using a 3.25mm circ needle, pick up 25(27,29,31) sts down left side front neck, 15 sts from holder at centre front neck, 25(27,29,31) sts up right side front neck, 9 sts down right side back neck, 31(33,35,37) sts from holder across back neck and 9 sts up left side back neck [114(120,126,132) sts].

RS - *K2, P1; rep from * to end of round. This round forms K2, P1 rib patt. Rep this round 3 times [4 rounds]. Cast off in rib.

Jo Sharp

www.josharppatterns.com



Vee Vest

Enjoy wearing this easy little vest. Comfy, light and loose, great over a shirt. Knitted with Jo Sharp's New Era Merino DK Superwash.



YARN

- 7, 7, 8, 8 balls 50g Jo Sharp New Era Merino DK Superwash in Peppermint 817

NEEDLES

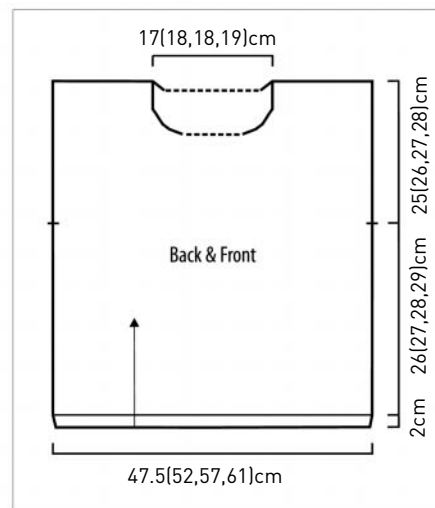
- 4.50mm needles
- 4.00mm circular needle, 40cm long
- Tapestry needle
- Stitch holders

MEASUREMENTS

Size: A, B, C, D

To fit bust: 80, 90, 100, 110cm

Bodice length: 53, 55, 57, 59cm



TENSION

21 sts and 26 rows measured over 10cm (approx 4 in) of St st using 4.50mm needles.

SPECIAL ABBREVIATIONS

C3F slip 2 sts onto cable needle and hold at front of work, purl next 1 st from left hand needle, then knit 2 sts from cable needle.

C3B slip 1 st onto cable needle and hold at back of work, knit next 2 sts from left hand needle, then purl 1 st from cable needle.

CBK slip 2 sts onto cable needle and hold at front of work, knit next 1 st from left hand needle, then knit 2 sts from cable needle.

CBP slip 1 st onto cable needle and hold at back of work, knit next 2 sts from left hand needle, then knit 1 st from cable needle.

Special pattern note:

The triangle detail at the neckline has a cable worked on RS. The RS is worked in reverse st st, therefore, P to one st before the two cabled K sts, place P st on cn and hold at back of work, then K next 2 sts and P st from the cn. At other end of triangle, place 2 K sts on cn, hold in front of work, P next st, then 2 K sts from the cn.

The beginning of the uneven rows start with P and the triangle starts and ends with K 2; the centre of the triangle is in K 2, P 2, rib as the sts become available.

The 2 K sts at each side of the triangle move to the right and the left on a background of reverse st st (P on the RS).

WORKING PATTERN

BACK

Using circular 4.50mm needles, cast on 100(110,120,130)sts. Work 6 rows in k1, p1 rib for 6 rows, ending on a WS row.

Row 7: RS - Purl 48(53,58,63), knit 4, purl to end.

Row 8: WS - Knit 48(53,58,63) purl 4, knit to end. Row 7 & 8 set pattern. Work straight in patt until length (incl.

band) measures 51.5(53.5,55.5, 57.5)cm, ending on a WS row.

Shape Neck

Next Row: RS - P until there are 36(40,45,49)sts on right hand needle, place centre 28(30,30, 32)sts on a st holder, join another ball of yarn and p to end.

Working both sides at the same time, cast off 2 sts at each neck edge, every alt row, twice, then cast off rem rem 32(36,41,45)sts loosely, either side.

FRONT

Work as for back until length (incl. band) measures 30.5(30.5,33.5,33.5) cm, ending on a WS row. Cont straight as for back and work centre triangle as foll;

Row 1: RS - P to 1 st before first k st of the row, C3B, C3F, p to end.

Row 2: WS - K the k sts and p the p sts.

Row 3: RS - P to 1 st before first k st, CBP p2 CBK, p to end.

Row 4: WS - K the k sts and p the p sts.

Row 5: RS - P to 1 st before first k st, CBP, k1, p2, k1, CBK, p to end.

Row 6: WS - K the k sts and p the p sts.

Row 7: RS - P to 1 st before first k st, C3B, k2, p2, k2, C3F, p to end.

Row 8: WS - K the k sts and p the p sts.

Row 9: RS - P to 1 st before first k st, C3B, p1, k2, p2, k2, p1, C3F, p to end.

Cont working centre triangle as set (working new sts of inner triangle into 2 x 2 rib) until length (incl. band) measures 44.5(45.5, 47.5,49)cm ending on a WS row.

Shape Neck

Next Row: RS - Work in patt until there are 41(45,50, 54)sts on right hand needle, place centre 18(20,20,22)sts on a st holder, join another ball of yarn and cont to end. Working both sides at the same time, cast off 4 sts at each neck edge on this and foll alt row, then cast off 2 sts on next alt row, then 1 st on next 3

alt rows. (The left front cast offs at the neck on the RS rows, the right front cast offs at the neck on the WS rows.) Cont without shaping in rib pattern AT THE SAME TIME stop extending triangle when 11 purled stripes of rib are complete and cont working sts as set until length (from beg) measures 53(55, 57,59)cm, ending on a WS row. Cast off rem 32(36,41,45)sts loosely either side.

MAKING UP

Press pieces gently. With WS facing, using edge to edge st, join shoulder seams.

NECKBAND

With RS facing, using 4.00mm circular needle and beg at back neck edge, k 28(30,30,32)sts from back neck holder, pick up and k 5 sts along left side back neck, 22(24, 24,26) sts along left side front neck, work 18(20,20,22)sts from front neck holder in rib as set, pick up and k 22(24,24,26)sts along right side front neck and 5 sts along right side back neck [100(108,108,116)sts].

Next Round: work in rib as foll;

Size A: P1 * k2, p2, rep from * to last 3 sts of round, k2, p1.

Size B and C: P2 * k2, p2, rep from * to last 2 sts of round, k2.

Size D: K1, p2 * k2, p2, rep from * to last st of round, k1.

Work 2 rounds in rib as set.

Cast off in rib.

With RS facing, using edge to edge st, join sides leaving 25(26,27,28)cm for armholes.

ARMHOLE BANDS

With RS facing and using 4.00mm circular needle, pick up and knit 50(52, 54, 56)sts along left front armhole edge and 50(52, 54, 56) sts along left back armhole edge [100(104,108,112)sts]. Work in k2, p2 rib in rounds for 4.5 cm. Cast off in rib. Work right armhole band in the same way. Press seams.

Jo Sharp

www.josharppatterns.com

GLOSSARY

BEGINNER'S TOOL KIT

PINS

Plastic-head pins are useful for checking tension and blocking out items. Pins with coloured heads are best because they do not get lost in your work.



ROW COUNTER

A row counter is helpful for keeping track of rows worked, particularly where increases, decreases or other kinds of patterning occur.



KNITTING IN ELASTIC

Elastic yarn prevents sagging in cuffs, collars and waists. You can work it in with knitting yarn on knitted or crocheted garments.



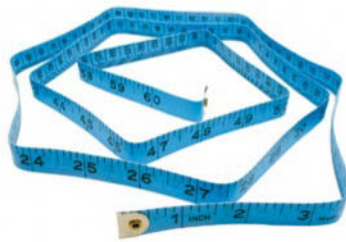
KNITTING NEEDLES

Knitting needles are made from plastic, aluminium or wood and come in varying lengths and widths. Straight needles come in pairs and doublepointed needles come in sets of four.



KNITTING BAG

A knitting bag is essential for those who like to knit 'on the go'. Not only is it a practical way to keep all your knitting paraphenalia together, it also helps keep the yarn clean and tangle-free.



TAPE MEASURE

A basic tape measure is essential for checking your garment measurements.

CIRCULAR KNITTING NEEDLES

Circular needles have two working ends joined by a thin nylon wire. They are more balanced than straight needles and allow the weight of your work to rest in your lap.



KNITTER'S NEEDLES

Knitter's needles need to have a large eye and a blunt point so they do not split stitches when sewing up your knitting.



STITCH GAUGE

A stitch gauge is a flat piece of metal or plastic with a ruler marked on one side and/or a window

cut out in the centre. It allows you to mark and measure easily and accurately.

STITCH HOLDER

A stitch holder is used to secure stitches not in use. You can also use safety pins for holding a small number of stitches.

Diagram 1

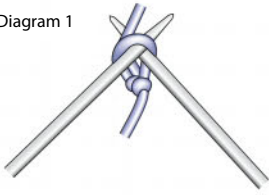
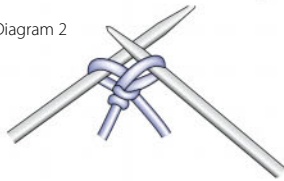


Diagram 2



CASTING ON

Casting on is creating a row of loops on a knitting needle to form the base row for your knitting. One of the most popular methods of casting on is the cable cast on. Form a slipknot about 25cm away from the end of the yarn.

Place the slipknot on a knitting needle and pull gently to secure. Hold this needle in your left hand. Insert the right-hand needle through the slip knot. Pass the yarn over the point of the right-hand needle (see Diagram 1).

Pull a loop through the slip knot with the right-hand needle to form the base row for your knitting. Place this loop on the left-hand needle and gently pull the yarn to secure the stitch. For the remaining cast-on stitches, insert the right-hand needle between the slip knot and the first stitch on the left-hand needle. Wind the yarn around the point of the right-hand needle. Draw a loop through and place this loop on the left-hand needle. Continue in this manner until you have cast on the desired number of stitches.

KNIT STITCH

Diagram 1

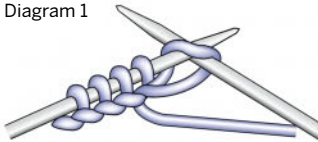


Diagram 2



Once you have cast on, you then knit into the stitches you have made to form the knitted fabric. Hold the needle with the cast on stitches in your left hand, with the loose yarn at the back of your work. Insert the right-hand needle from left to right through the front of the first stitch on the left-hand needle (see Diagram 1). Wind the yarn from left to right over the point of the right-hand needle (see Diagram 2). Draw the

yarn through the stitch to form a new stitch on the right-hand needle. Slip the original stitch off the left-hand needle, keeping the new stitch on the right-hand needle. To knit a row, repeat these steps until all the stitches have been transferred from the left-hand needle to the right-hand needle. Turn your work, transferring the needle with the stitches on into your left hand to work the next row.

PURL STITCH

Diagram 1

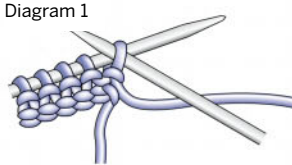
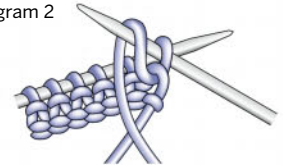


Diagram 2



The purl stitch is basically the reverse of the knit stitch. Hold the needle with the stitches on in your left hand, with the loose yarn at the front of your work. Insert the right-hand needle from right to left into the front of the first stitch on the left-hand needle (see Diagram 1). Wind the yarn from right to left over the point of the right-hand needle (see Diagram 2). Draw the yarn through the

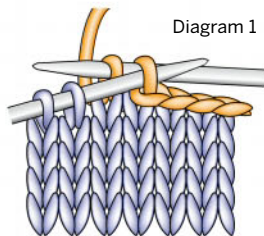
stitch to form a new stitch on the right-hand needle. Slip the original stitch off the left-hand needle, keeping the new stitch on the right-hand needle. To purl a row, repeat these steps until all the stitches have been transferred from the left-hand needle to the right-hand needle. Turn your work, transferring the needle with the stitches on into your left hand to work the next row.

CASTING OFF

KNITWISE

Knit two stitches. Use the point of the left-hand needle to lift the first stitch on the right-hand needle over the second, and drop it off the needle. Knit the next stitch on the left-hand needle so that there are two stitches on the right-hand needle again, and repeat. Continue in this manner until all the stitches have been worked off the left-hand needle and only one stitch remains on the right-hand needle. Cut the yarn, leaving a tail and thread the yarn through the loop and pull it firmly to fasten off.

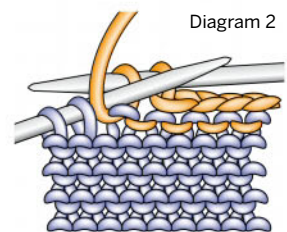
Diagram 1



PURLWISE

Purl two stitches. Use the point of the left-hand needle to lift the first stitch on the right-hand needle over the second, and drop it off the needle. Purl the next stitch on the left-hand needle so that there are two stitches on the right-hand needle again, and repeat. Continue in this manner until all the stitches have been worked off the left-hand needle and only one stitch remains on the right-hand needle. Secure this last stitch as described in casting off knitwise.

Diagram 2



SUBSTITUTING YARNS

If you substitute or spin a yarn for a project, you can compare the weight of the yarn to the project yarn by comparing wraps per inch. Wrap your yarn around a ruler for one inch and count the number of wraps. If you have more wraps per inch than the project yarn, your yarn is too thin; if you have fewer wraps per inch than the project yarn, your yarn is too thick.



KNITTING TENSION

Checking your knitting tension, that is, the tightness or looseness of your knitting, is important. To check your tension, cast on 30 stitches using the recommended needle size. Work in the pattern until your work measures 10cm from the cast on edge then cast off. You now have a "swatch". Measure your tension by placing a ruler over your swatch and counting the number of stitches

across and rows down (including fractions of stitches and rows) in 10cm. Repeat these measurements two to three times on a different parts of the swatch to check your measurements. If you have more stitches and rows than called for in the instructions, you should use larger needles; if you have fewer, use smaller needles. Check your tension again before starting your project.

PROVISIONAL CAST ON (INVISIBLE CAST ON)

Place a loose slipknot on the needle in your right hand. Hold the waste yarn next to the slipknot and around your left thumb. Hold your working yarn over your left index finger.

*Bring the needle forward under the waste yarn, over the working yarn, grab a loop of working yarn (Diagram

1), then bring the needle to the front, over both yarns, and grab a second loop (Diagram 2). Repeat from * until you have the desired number of stitches on your needle. When you're ready to work in the opposite direction, pick out the waste yarn to expose the live stitches.

Diagram 1

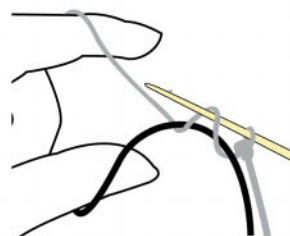
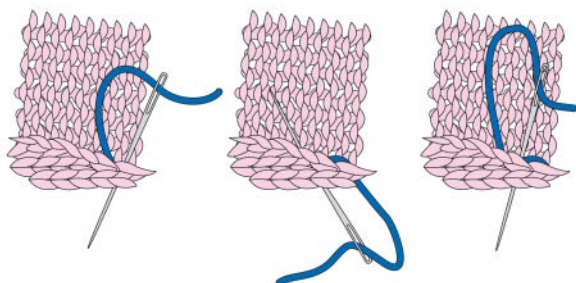


Diagram 2



Diagram 1



BACKSTITCH

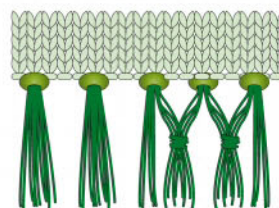
This is the stitch most commonly used for joining knitted garments. With the right sides of your work together, pin the knitted fabric together with the edges even. The seam should be sewn one full stitch from the end of the row. One stitch should be worked over every row. Thread the yarn needle. Insert the needle through both layers and sew two stitches to the left then one stitch back to the right. Keep stitches at an even distance. Continue working from right to left in this circular motion. (Diagram 1)

TASSELS

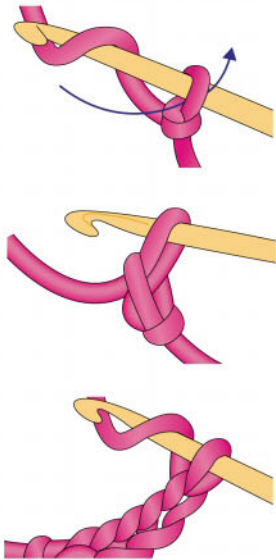
Cut yarn twice the length of your desired tassel plus a bit extra for the knot. According to the desired thickness of the tassel, select a number of lengths of yarn. Fold the lengths of yarn in half over a crochet hook. On the wrong side, insert the crochet hook from the front to the back through the edge of the work. Grab the yarn and pull through and tighten. Trim the ends to the same length.

KNOTTED FRINGE

After working a tassel, take one half of the strands from each tassel and knot them with half the strands from the neighbouring tassel. Trim.

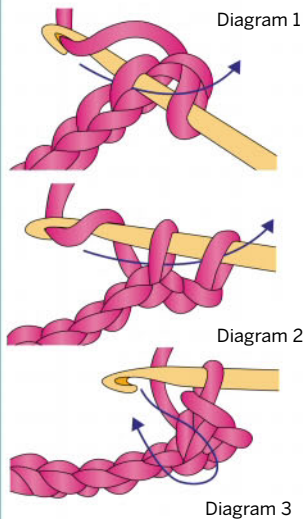


CROCHET CHAIN



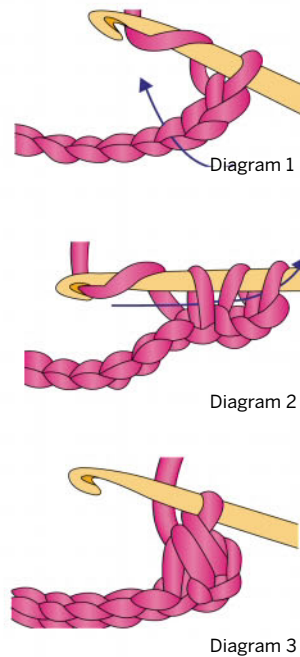
Make a slip knot on your hook. Pass the yarn over the hook and catch it with the hook and draw it through the loop on the hook. Repeat, drawing yarn through the last loop formed.

DOUBLE CROCHET (DC) (US SINGLE CROCHET SC)



Insert the hook through the top two loops of a stitch. Pass the yarn over the hook and draw up a loop so that you have two loops on the hook (Diagram 1). Pass the yarn over the hook and draw through both loops on the hook (Diagram 2). Continue in the same way, inserting the hook into each stitch (Diagram 3).

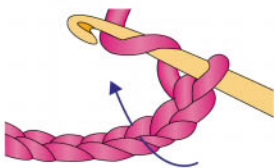
HALF TREBLE CROCHET (HTR) (US HALF DOUBLE CROCHET HDC)



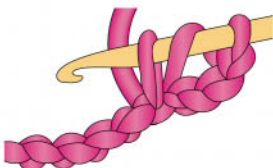
Pass the yarn over the hook. Insert the hook through the top two loops of a stitch (Diagram 1). Pass the yarn over the hook and draw up a loop so that there are three loops on the hook (Diagram 2). Draw through all three loops on the hook (Diagram 3).

TREBLE CROCHET (TR) (US DOUBLE CROCHET DC)

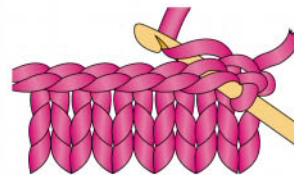
Diagram 1



Pass the yarn over the hook. Insert the hook through the top two loops of a stitch (Diagram 1). Pass the yarn over the hook and draw up a loop so that you have three loops on the hook (Diagram 2). Pass the yarn over the hook and draw it through the first two loops on the hook, pass the yarn over the hook and draw through the remaining two loops. Continue in the same way, inserting the hook into each stitch (Diagram 3).



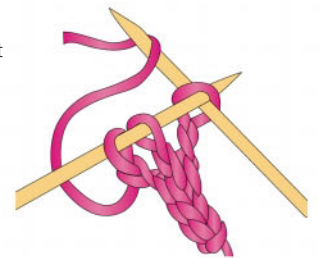
SLIP STITCH CROCHET (SL ST)



Insert your hook into the stitch. Yarn over the hook and draw the loop through the stitch and loop onto the hook.

I-CORD

With double-pointed needles, cast on the desired number of stitches. *Without turning the needle, slide the stitches to the other end of the needle, pull the yarn around the back and knit the stitches as usual. Repeat from * until your work measures the desired length



PICKING UP DROPPED STITCHES

A dropped stitch can be picked up using a crochet hook and don't be put off by stitches that have unraveled several rows down into the work. To pick up knit stitches, insert the crochet hook into the dropped stitch, draw through the bar lying above the dropped stitch and pull it through the loop of the dropped stitch.

KNITTING ABBREVIATIONS

Alt - Alternate; alternately	P2tog - Purl two stitches together
Beg - Begin; begins; beginning	Patt - pattern
CC - Contrasting colour	Psso - Pass slipped stitch over previous stitch
Ch - Chain	Pb - Purl through the back of the stitch
Cm - Centimetre/s	Pwise - Purlwise
CO - Cast on	Rem - Remaining
Cont - Continue; continuing	Rep - Repeat
Dec - Decrease; decreasing	SI 1 - Slip one stitch across from left needle to right needle without knitting it.
Dk - Double Knitting	SI 1 Purlwise - Slip next stitch off left needle onto right as if to purl the stitch.
Foll - Follow; follows; following	Sts - Stitches
G st - Garter stitch. If knitting back and forth, knit every row. If knitting circularly, one round knit, next round purl.	St st - Stocking stitch. If knitting back and forth, one row knit, next row purl. If knitting circularly, knit each round.
Inc - Increase; increasing	SSK - Slip, slip knit. Makes a left slanting decrease. Slip two stitches knitwise, on at a time from the left to the right needle, then knit them together through their backs.
Incl - Including	Tog - Together
K - Knit	WS - Wrong side
K1 - Knit one stitch	Ybk - Yarn back
K2tog - Knit two stitches together	Y fwd - Yarn forward - bring yarn under the needle, then over to the knitting position again, creating a new stitch.
Kb - Knit through the back of the stitch	Yo - Yarn over.
Kwise - Knitwise	
M - Make one stitch	
MC - Main colour. When two or more colours are used, the main colour is the yarn that is dominant.	
P - Purl	
P1 - Purl one stitch	

CROCHET TERMS & ABBREVIATIONS

approx	approximately		together or skipping the stitches.
beg	begin(ning)		
CC	contrast colour	foll	follow(s)(ing)
ch	chain(s)	gm	grams
cm	centimetre(s)	htr	half treble crochet (US half double crochet hdc)
cont	continue(ing)		
dc	double crochet (US single crochet sc)	inc	increase(ing). Add stitches in a row by working in extra stitches into a chain or between the stitches.
dec	decrease(ing). Reduce the stitches in a row by either working the stitches		

CROCHET TERMS & ABBREVIATIONS CONTINUED ...

LH	left-hand	sl st	slip stitch
lp(s)	loop(s)	sp(s)	space(s)
m	metre(s)	st(s)	stitch(es)
MC	main colour	t-ch	turning chain
mm	millimetre	tog	together
oz	ounces	tr	treble (US dc)
pat(s)	pattern(s)	WS	wrong side work even/work straight. Continue in the pattern without increasing or decreasing yards
pm	place markers. Place or attach a loop of contrast yarn or a stitch marker as indicated.	yd	yards
rem	remaining	yo	yarn over. Wrap the yarn around the hook
rep	repeat	*	repeat the directions following * as many times as indicated
rnd(s)	round(s)		
RH	right-hand		
RS	right side		
sk	skip, miss		

CROCHET HOOKS

METRIC	US
.60mm	14 steel
.75mm	12 steel
1.00mm	10 steel
1.50mm	6 steel
1.75mm	5 steel
2.00mm	B/1
2.5mm	C/2
3.00mm	D/3
3.50mm	E/4
4.00mm	F/5
4.50mm	G/6
5.00mm	H/8
5.50mm	I/9
6.00mm	J/10
6.50mm	K
7.00mm	K/10.5
	P
	Q
	S

KNITTING NEEDLES

METRIC	UK	US
2mm	14	0
2.25mm	13	1
2.5mm		
2.75mm	12	2
3mm	11	
3.25mm	10	3
3.5mm		4
3.75mm	9	5
4mm	8	6
4.5mm	7	7
5mm	6	8
5.5mm	5	9
6mm	4	10
6.5mm	3	10.5
7mm	2	
7.5mm	1	
8mm	0	11
9mm	00	13
10mm	000	15

© Creative Knitting

All work in Creative Knitting is protected by copyright. A single pattern or chart may be reproduced for personal, nonprofit use. Patterns and charts may not be reproduced to sell or distribute to others. Patterns may not be reproduced on letterhead, with another designers name attached or on the internet. Patterns may not be reproduced for classes or groups without the express permission of the publisher. Items produced using patterns may not be sold with any name other than that of the pattern designer. Contact Woodlands Publishing Pty Ltd for further information on copyright.

Business Directory



Janique of Chelsea

CRAFT SUPPLIES • GIFTS • HOMEWARES • FASHION

Specialising in:

- Knitting yarn and needles
- Tapestries and threads
- Haberdashery, beads, trims and accessories

We have the highest quality products and advice for our customers

Shop 2/434 Nepean Hwy, Chelsea Vic 3196
 Ph: 03 9776 1155 Web: www.woolworld.com.au
 Email: janiquechelsea@hotmail.com

CLECKHEATON • FILATURA • NATURALLY • PANDA • PATONS • WENDY



knitalpaca
Knit Yourself Some Luxury

PH 0417 399 565
info@knitalpaca.com.au
www.knitalpaca.com.au

Knitalpaca Knit yourself some luxury—naturally



Luxurious natural fibres in gorgeous yarns, all made in Australia

Cleckheaton | Patons | Panda | Shepherd | Debbie Bliss | Katia | Addi | Knit Pro

Inspire ♥ Create ♥ Share

Crossways

WOOL & FABRICS

180 Rokeby Road, Subiaco WA 6008
www.crosswayswoolandfabrics.com.au **08 9381 4286**



the-wool-inn.com.au
 penrith nsw 02 4732 2201



Australian **Knitting**
 Yarn • Embellishments • Patterns

Advertise here

**Call Simon Mullen
 on (02) 4733 8482**

Banksia Yarns

Shop 7 Magnolia Mall
 285 Windsor St
 Richmond NSW



0401 279 853

shop@banksiayarns.com.au
www.banksiayarns.com.au

Barb's Sew and Knits

2 Byron Street Glenelg Sth Aust 5045

Specialising in
 Australian and Imported wool & yarns
 plus Knitting Machine sales and service



www.barbssewandknits.com.au Phone Barb: 08 8294 7441

**ALSO
SHOP ONLINE
WWW.WPCO.COM.AU**



\$19.99
\$16.99



\$37.99
\$34.99



\$19.99
\$16.99



\$19.99
\$16.99



\$19.99
\$16.99



\$22.99
\$18.99



\$22.99
\$18.99



\$29.99
\$24.99



\$24.99
\$19.99



\$24.99
\$19.99



\$24.99
\$19.99



\$24.99
\$19.99



\$24.99
\$19.99



\$29.99
\$26.99



\$39.99
\$33.99



\$29.99
\$24.99



\$34.99
\$29.99



\$19.99
\$16.99



\$29.99
\$24.99



\$19.99
\$16.99



\$37.99
\$34.99



\$29.99
\$24.99



\$24.99
\$19.99



\$24.99
\$19.99



\$29.99
\$24.99



\$35.99
\$32.99



\$19.99
\$16.99



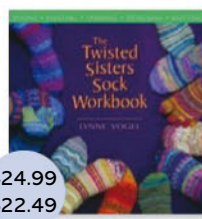
\$24.99
\$19.99



\$12.99
\$10.99



\$29.99
\$24.99



\$24.99
\$22.49



\$29.99
\$24.99



\$28.99
\$26.99

SAVE UP TO 20% ON SELECTED BOOKS

HURRY ORDER TODAY AND SAVE

TITLE	SPECIAL DISCOUNT	TITLE	SPECIAL DISCOUNT
PLEASE TICK BOOKS REQUIRED		<input type="checkbox"/> Gifted: Lovely little things to knit and crochet	\$29.99
<input type="checkbox"/> Angels: a knitter's dozen	\$16.99	<input type="checkbox"/> Hats: a knitter's dozen	\$16.99
<input type="checkbox"/> Artful Color, Mindful Knits	\$34.99	<input type="checkbox"/> Inspired to Knit	\$24.99
<input type="checkbox"/> Babies & Toddlers: a knitter's dozen	\$16.99	<input type="checkbox"/> Kids: a knitter's dozen	\$16.99
<input type="checkbox"/> Bags: a knitter's dozen	\$16.99	<input type="checkbox"/> Knit Back in Time	\$34.99
<input type="checkbox"/> Beginner's Guide to Crochet	\$16.99	<input type="checkbox"/> Knitted Pirates, Princesses, Witches, Wizards	\$24.99
<input type="checkbox"/> Beginner's Guide to Knitting	\$18.99	<input type="checkbox"/> Knitter's at Home	\$19.99
<input type="checkbox"/> Beginner's Guide to Knitting on a Loom	\$18.99	<input type="checkbox"/> The Knitter's Handbook	\$19.99
<input type="checkbox"/> Best Interweave Knits	\$24.99	<input type="checkbox"/> Knitting Experience 3: Color	\$24.99
<input type="checkbox"/> Best of Knitter's: Arans & Celts	\$19.99	<input type="checkbox"/> A Stitch in Time: Heirloom Skills	\$32.99
<input type="checkbox"/> Best of Knitter's: Guy Knits	\$19.99	<input type="checkbox"/> Scarves: a knitter's dozen	\$16.99
<input type="checkbox"/> Best of Knitter's: Jackets for work & play	\$19.99	<input type="checkbox"/> Socks Socks Socks	\$19.99
<input type="checkbox"/> Best of Knitter's: Shawls & Scarves	\$19.99	<input type="checkbox"/> Twenty to Make – Eco-Friendly Knits	\$10.99
<input type="checkbox"/> Caps in Felt, Knitting & Crochet	\$19.99	<input type="checkbox"/> Twisted Sisters Knit Sweaters	\$24.99
<input type="checkbox"/> Crochet in Color	\$26.99	<input type="checkbox"/> Twisted Sisters Sock Workbook	\$22.49
<input type="checkbox"/> Crochet – Made Easy	\$33.99	<input type="checkbox"/> Vintage Modern Knits	\$24.99
<input type="checkbox"/> Encyclopaedia of Knitting and Crochet Blocks	\$24.99	<input type="checkbox"/> Wrapped in Crochet	\$26.99

TITLE MR MRS MS MISS

Name _____

Address _____

State _____ Postcode _____

Email _____

Telephone (inc. area code) _____

Please debit my: Mastercard Visa

Card No

Expiry date /

Cardholder name (PLEASE PRINT) _____

Signature _____ Date _____

Cheque/Money Order (Aust. only) I enclose a cheque/money order made payable to

Woodlands Publishing Pty Ltd (ABN 30 115 093 162) for \$

** All prices include GST. Please add Parcel Post \$9.95*



POST

PO Box 8035
Glenmore Park NSW 2745



CALL FAX

Phone: 02 4722 2260
Fax: 02 4733 8583



@ EMAIL

orders@wpco.com.au

Next Issue

Australian Knitting Vol 10 No 1

- Autumn ideas for the whole family
- Step-by-step instructions
- All the latest news and fashion ideas
- Full of tips and advice

ON SALE 18 JANUARY 2018



Australian Knitting

Yarn • Embellishments • Patterns

PUBLISHER Simon Mullen

CREATIVE DIRECTOR Hayley Jagger

PRODUCTION EDITOR Amy Butler

TECHNICAL EDITOR Annlee Butler

SUB EDITOR Anita Mullen

PHOTOGRAPHER Alex Mullen

STYLIST Hayley Jagger

EDITORIAL ENQUIRIES

Phone: 02 4733 8482 Fax: 02 4733 8583

Email: simon@wpco.com.au

NATIONAL ADVERTISING MANAGER

Simon Mullen 02 4733 8482 Fax: 02 4733 8583

Email: simon@wpco.com.au

ADVERTISING COORDINATOR

Anita Mullen

Email: anita@wpco.com.au

ADVERTISING ENQUIRIES Cindy Francis

Phone: 07 5499 9837

Email: adv@wpco.com.au

SUBSCRIPTION ENQUIRIES Janie Medbury

Phone: 02 4722 2260 Fax: 02 4733 8583

Email: subs@wpco.com.au

Website: www.wpco.com.au

For back issues call 02 4722 2260

RETAIL SALES/OVERSEAS DISTRIBUTION ENQUIRIES

Simon Mullen

Email: simon@wpco.com.au

PUBLISHED BY

Published, promoted and distributed by

Woodlands Publishing Pty Ltd (ACN 115 093 162).

All rights reserved.

Woodlands Publishing Pty Ltd

PO Box 8035 Glenmore Park NSW 2745

Woodlands Publishing Pty Limited has taken reasonable steps to secure the copyright in the articles and photographs reproduced in this publication. We secure from each article's author a warranty that the copyright subsisting in the article is the author's original work, or the author has obtained all necessary rights, licences and permissions, and publishing it in this publication will not infringe any third party's copyright. Articles are published relying on the representations and warranties of the authors of the articles and without our knowledge of any infringement of any third party's copyright. All material in this magazine is copyright and cannot be reproduced in part or in full without written permission from the publisher. Prices and dates quoted in this issue were correct at the time of going to press but may be subject to variation.



hello, HAWTHORNE!

*A beguiling twist on sturdy sock yarn,
Hawthorne features carefully curated,
vibrant colors for socks and shawls
that are a delight to make and wear.*

Fingering \$14.29/100g hank (357 yards)
80% Superwash Fine Highland Wool, 20% Polyamide

Available in: 12 NEW Tonal Hand Paints, 12 Kettle
Dyes and 26 Multi Hand Painted (with 11 new colors!).

Knit Picks[®]
MAKE MORE FOR LESS



CONNECT WITH US      

KnitPicks.com 080-8234-6084

*Limited time offer. All pricing includes VAT, duties and fees.

ASHFORD TEKAPO YARN

29 beautiful solid shades



Ashford Tekapo yarn is available in 8 ply Double knit and 12 ply Triple knit. Lofty and bulky it is perfect for all your knitting, crochet, weaving and knit/felt projects.

Great value and available in solid and co-ordinating random shades.

8 Ply Double knit

- 200m/218yds
- 100gm ball

12 Ply Triple knit

- 134m/146yds
- 100gm ball

5 co-ordinating random shades



Ashford Knitters Loom

Convenient, portable and easy to use. A great way to use your yarn stash and create exciting projects. The perfect loom to weave Ashford Tekapo yarn on.

Loom includes everything you need to start weaving and step-by-step colour instructions.

Just add yarn!



Fold and go!



Available from all good yarn stores in Australia and New Zealand. New stockist enquiries welcome.
Australia 1 800 653 397 New Zealand 0508 459 459

To locate your local stockist and download free patterns visit our website www.ashford.co.nz/yarn